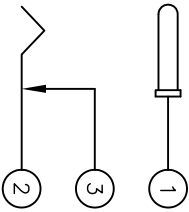
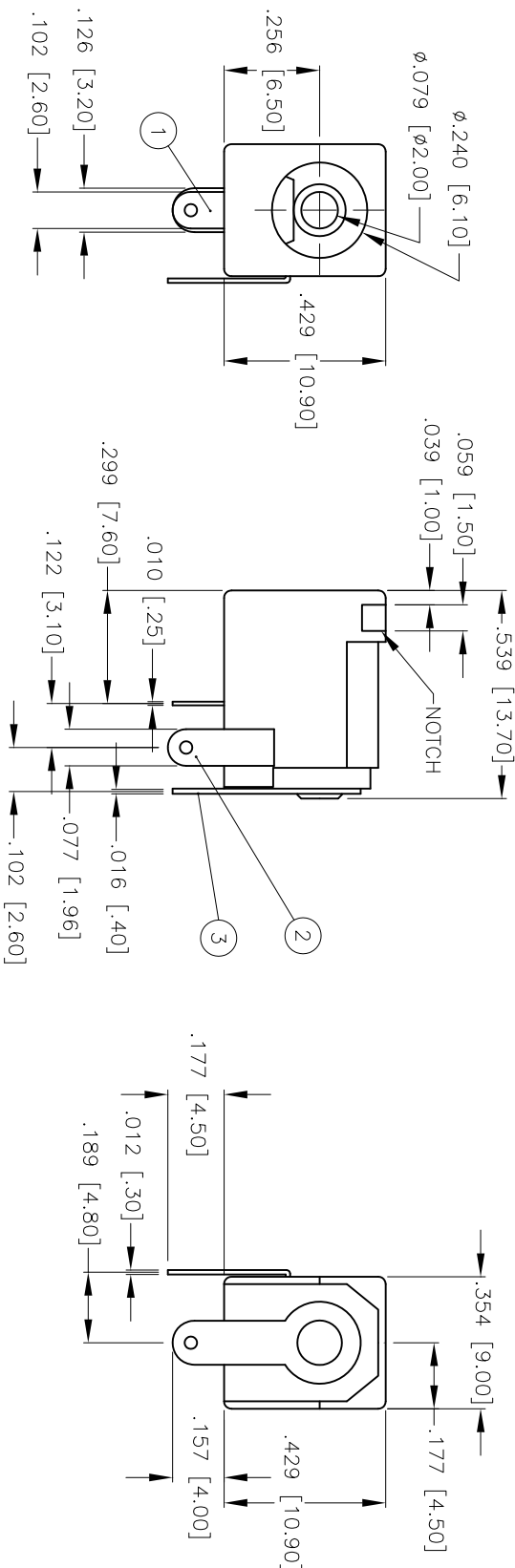


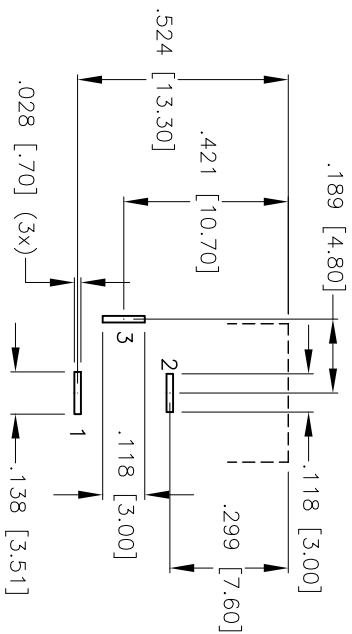
Rev	AWO #	Description	Date	Appr
-		RELEASED	3/26/04	

APPROVED: _____

DATE: _____ TITLE: _____



SCHEMATIC



**RECOMMENDED
PCB LAYOUT (COMPONENT SIDE)**

SPECIFICATIONS:

Material: Polyformaldehyde (POM), glass reinforced thermoplastic, rated UL 94HB

Contacts: Brass

Plating: 100 µin nickel plate to QQ-N-290, Class 2, Grade C over 50 µin copper underplate to MIL-C-14550

Electrical: Current and Voltage Rating: 1.0 A max @ 250 VAC max

3.5 A @ 24 VDC

Contact resistance: 30 mohm max

Insulation resistance: 100 Mohm min @ 500 VDC
Dielectric withstanding voltage: 500 VAC min rms

Environmental: Operating temperature: -65°C to +85°C

UNLESS OTHERWISE SPECIFIED
ALL DIMENSIONS ARE MM [INCHES]
TOLERANCES: EXCEPT AS NOTED

INCHES	HOLES
.X ± .10	± .10
.XX ± .020	± .015
.XXX ± .015	± .010

APPROVALS

DRAWN	SLS	3/26/04
CHECKED		
APPROVED		

ADAM TECH
909 Rahway Avenue, Union, NJ 07083
Phone: 908-687-5000 Fax: 908-687-5710

TITLE: **DC Power Jack, Notched Housing**
2.0mm DIA. Center Pin

SIZE: X
PART NO.: ADC-002-1-N
SCALE: NTS
SHEET 1 OF 1