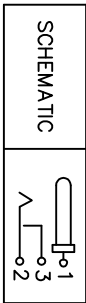
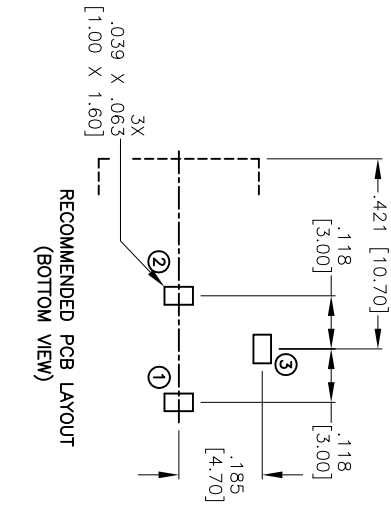
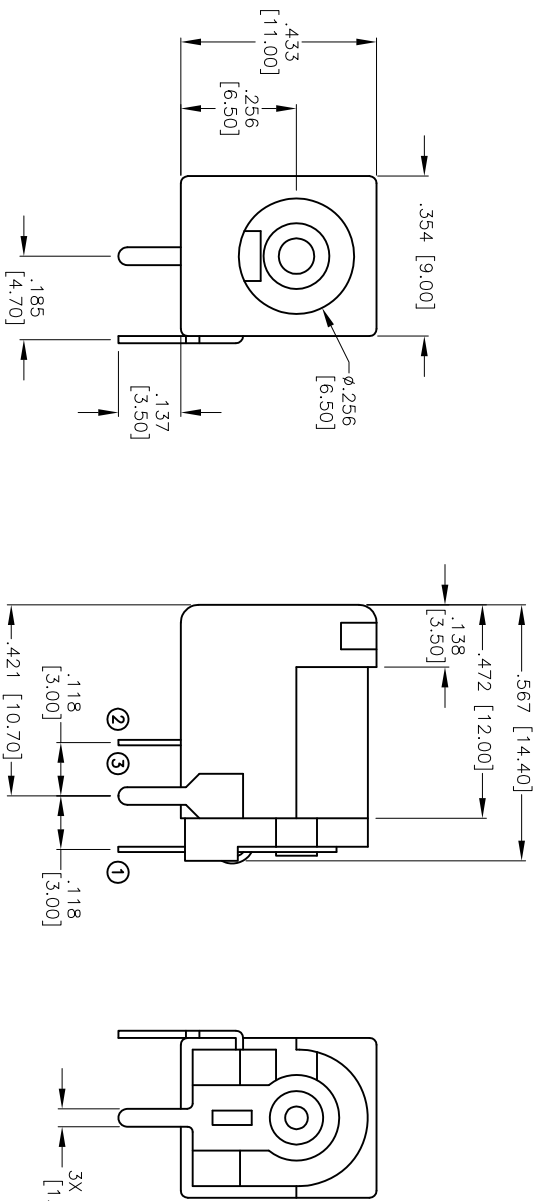
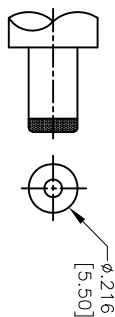


APPROVED: \_\_\_\_\_  
 DATE: \_\_\_\_\_ TITLE: \_\_\_\_\_

Rev	AWO #	Description	Date	Appr
-		RELEASED	12/22/08	
A		REVISED SPEC.	5/6/15	AV/KW



PART NO.	CENTER PIN DIA.
ADC-002-9-N-PC	.065 [1.65]
ADC-002-1-N-PC	.078 [2.00]
ADC-002-2-N-PC	.098 [2.50]



DC MATE PLUG

**SPECIFICATIONS:**

Material: PBT, Glass reinforced, rated UL 94V-0  
 Insulator color: Black  
 Center Pin: Copper Alloy, Nickel plated  
 Contacts: Copper Alloy  
 Plating:  
 Tin over Copper underplate overall

Electrical:  
 Operating voltage: 16 VDC max.

Current rating: 2.5 Amp max.

Contact resistance: 50 mohms max. initial

Insulation resistance: 100 Mohms min.  
 Dielectric withstanding voltage: 500 VAC for 1 minute

Temperature Rating:  
 Operating temperature: -25°C to +85°C  
 Environmental:  
 Lead free, RoHS compliant



**ADAM TECH**

909 Rahway Avenue, Union, NJ 07083  
 Phone: 908-687-5000 Fax: 908-687-5710

**DC Power Jack, Notched Housing  
 RIGHT ANGLE PCB**

UNLESS OTHERWISE SPECIFIED ALL DIMENSIONS ARE MM [INCHES] TOLERANCES: EXCEPT AS NOTED	
INCHES	HOLDS
.X ± .10	ØXX ± .10
.XX ± .020	ØXXX ± .015
.XXX ± .015	ØXXX ± .010
APPROVALS	DATE
DRAWN	SLS
CHECKED	
APPROVED	

TITLE	SIZE	PART NO.	REV.
DC Power Jack, Notched Housing RIGHT ANGLE PCB	X	ADC-002-X-N-PC	A
REF: S00021C	SCALE: NTS	SHEET 1 OF 1	