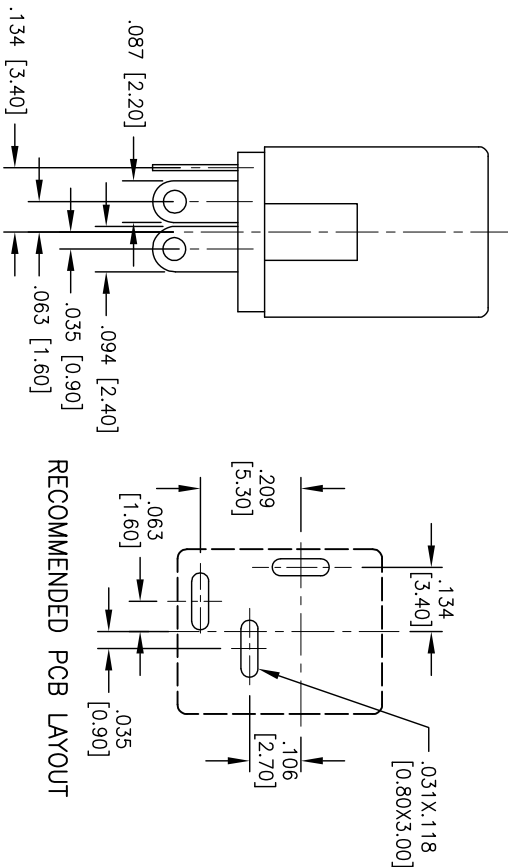
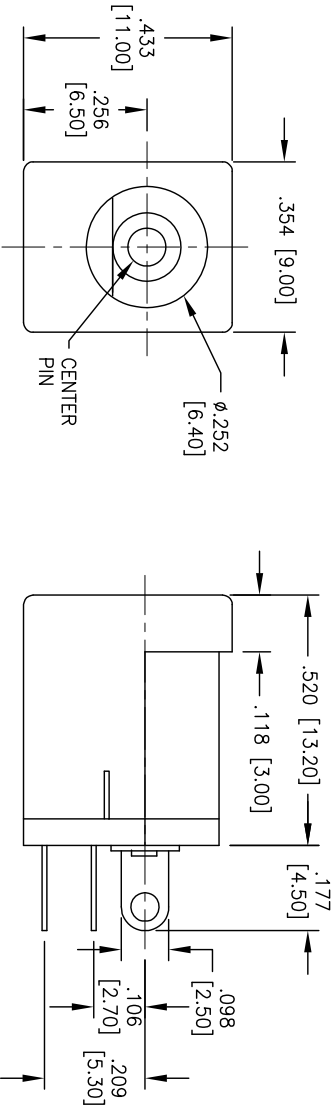
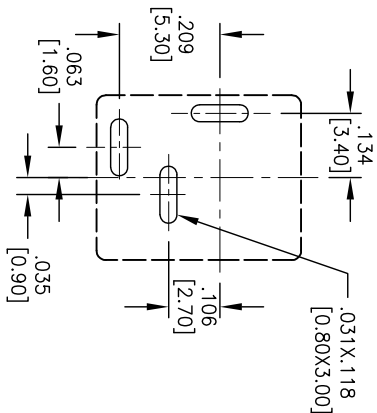


APPROVED: _____
 DATE: _____ TITLE: _____

Rev	AWO #	Description	Date	Appr
-		Redrawn	7/12/06	
A		REDRAWN	7/20/11	

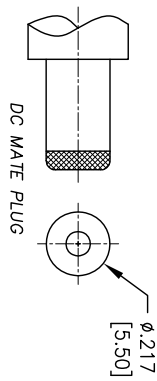
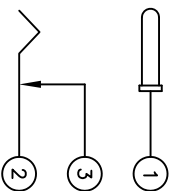


RECOMMENDED PCB LAYOUT



P/N	Center Pin Dia
ADC-002-1-V	2.00 mm
ADC-002-5-V	2.35 mm
ADC-002-2-V	2.50 mm

SCHEMATIC



SPECIFICATIONS:

Material: Insulator: PBT, rated UL 94V-0
 Insulator color: Black
 Cover: P.F. color: Brown
 Center Pin: Brass, Nickel plated
 Contacts: Copper Alloy

Plating: Silver over Nickel underplate

Electrical:

Operating voltage: 20 VDC max
 Current rating: 2 Amp max

Contact resistance: 50 mohms max
 Insulation resistance: 100 Mohms min @ 500 VDC

Dielectric withstanding voltage: 500 VAC for 1 minute

Temperature Rating: Operating temperature: -20°C to +70°C

Environmental: Lead free, RoHS compliant.

Recommended soldering temp: 235°C for 5 sec.



ADAM TECH

909 Rahway Avenue, Union, NJ 07083
 Phone: 908-687-5000 Fax: 908-687-5710

TITLE: "X" mm Center Pin, DC Power Jack
 VERTICAL PCB MOUNT

UNLESS OTHERWISE SPECIFIED ALL DIMENSIONS ARE INCHES [MM] TOLERANCES: EXCEPT AS NOTED		INCHES		HOLES	
X	± .10	Ø X	± .10	Ø XXX	± .015
.XX	± .020	Ø XXX	± .015	Ø XXX	± .010
.XXX	± .015	Ø XXX	± .010		
APPROVALS		DATE			
DRAWN	SS	7/12/06			
CHECKED					
APPROVED					
SIZE	PART NO.	SCALE:	NTS	SHEET	1 OF 1
X	ADC-002-X-V				
REV.					
A					