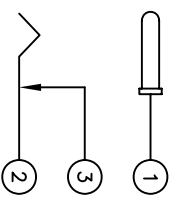
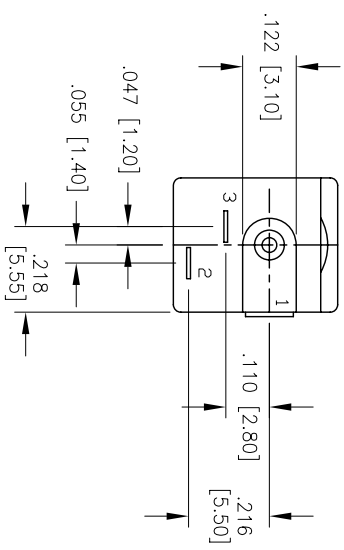
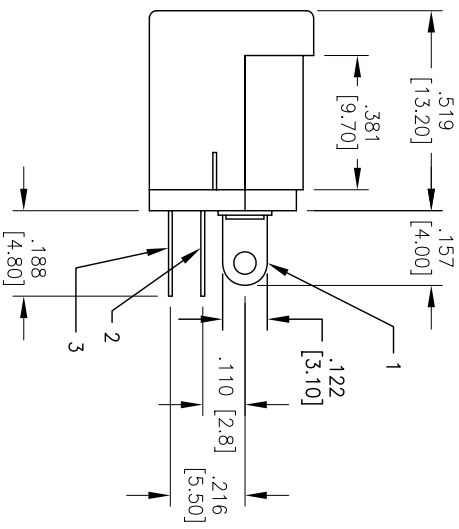
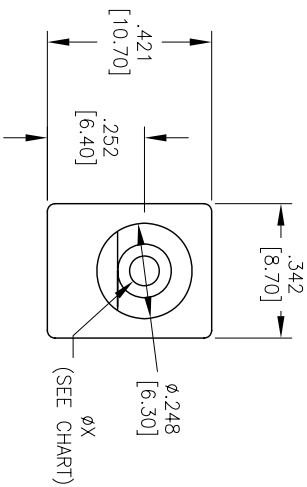
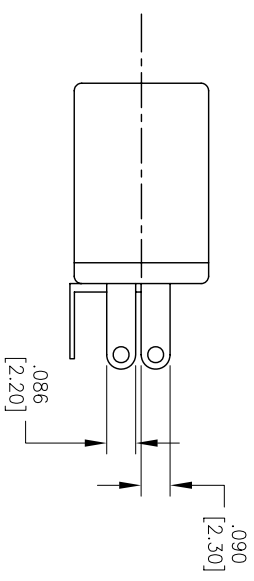


Rev	AWO #	Description	Date	Appr
-	-	Retirement	4/3/07	

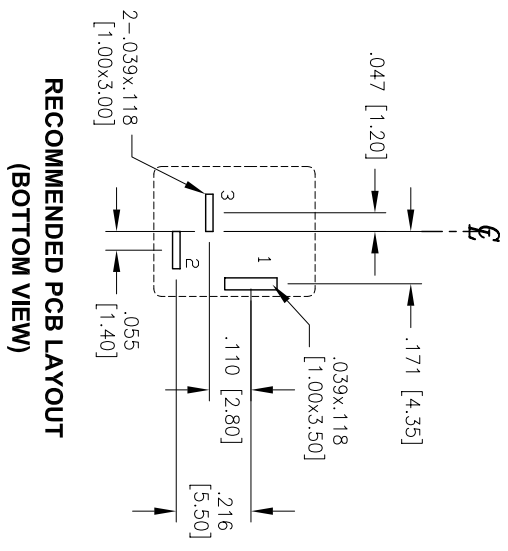
APPROVED: \_\_\_\_\_ TITLE: \_\_\_\_\_  
 DATE: \_\_\_\_\_



SCHEMATIC



P/N	Center Pin Dia
ADC-002A-1-V	2.00 mm
ADC-002A-5-V	2.35 mm
ADC-002A-2-V	2.50 mm



RECOMMENDED PCB LAYOUT  
(BOTTOM VIEW)

**SPECIFICATIONS:**

Material: Insulator: PBT, Glass Reinforced, rated UL 94V-0  
 Insulator color: Black  
 Center Pin: Brass, Nickel plated  
 Contacts: Copper Alloy  
 Plating: Silver over Nickel underplate

Electrical: Operating voltage: 30 VDC max  
 Current rating: 1 Amp max  
 Contact resistance: 30 mohms max  
 Insulation resistance: 100 Mohms min @ 500 VDC  
 Dielectric withstanding voltage: 500 VAC for 1 minute  
 Temperature Rating: Operating temperature: -25°C to +70°C

Environmental: Lead free, RoHS compliant.  
 Recommended soldering temp: 235°C for 5 sec.



UNLESS OTHERWISE SPECIFIED ALL DIMENSIONS ARE INCHES [MM] TOLERANCES: EXCEPT AS NOTED	
INCHES	[MM]
.XX	±.10
.XX	±.020
.XXX	±.015
.XXX	±.010
∅XX	∅XX
∅XXX	∅XXX
DATE	
APPROVALS	
DRAWN	BW
CHECKED	
APPROVED	

**ADAM TECH**  
 909 Rahway Avenue, Union, NJ 07083  
 Phone: 908-687-5000 Fax: 908-687-5710

TITLE: "X" mm Center Pin, DC Power Jack  
 VERTICAL PCB MOUNT

SIZE: PART NO. ADC-002A-X-V  
 SCALE: NTS SHEET 1 OF 1