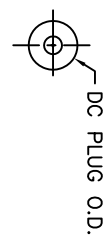
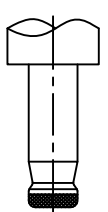
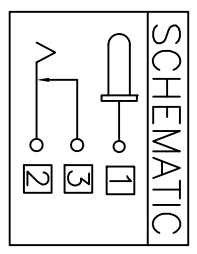
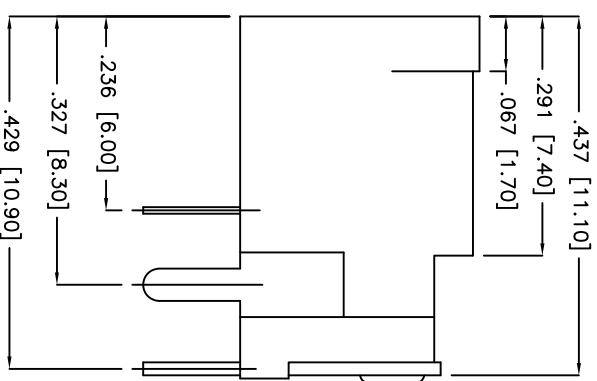
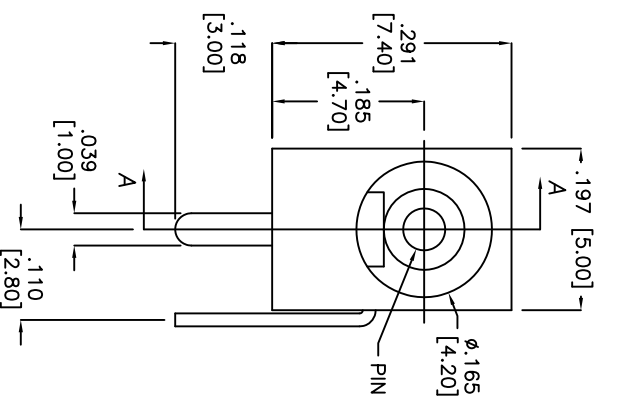
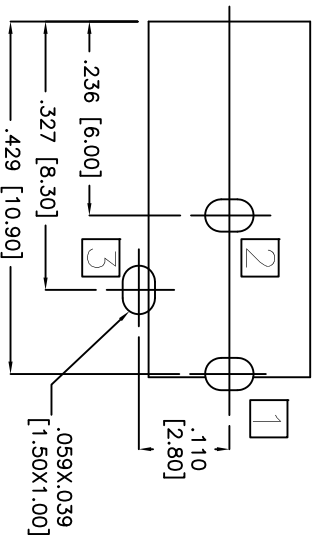
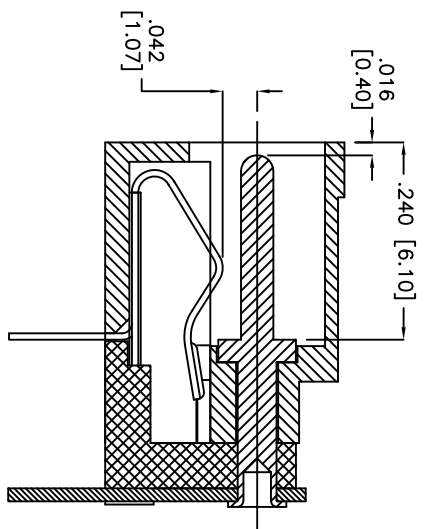


Rev	AWO #	Description	Date	Appr
-		RELEASED	2/12/14	

APPROVED: _____
 DATE: _____ TITLE: _____



PART NO.	CENTER PIN DIA.	DC PLUG O.D.
ADC-007-3-WT	.039 [1.00]	.138 [3.50]
ADC-007-4-WT	.051 [1.30]	.138 [3.50]
ADC-007-8-WT	.026 [0.65]	.093 [2.35]



SECTION A-A

RECOMMENDED PCB LAYOUT

SPECIFICATIONS:
 Material: Insulator: PBT, Glass reinforced, rated UL 94V-0
 Insulator color: White (XH1013 PBT)
 Center Pin: Copper Alloy, Nickel plated
 Spring: Stainless steel
 Contacts: Brass
 Plating: Silver over Nickel underplate

Electrical:
 Operating voltage: 30 VDC max.
 Current rating: 1 Amp max.
 Contact resistance: 50 mohms max. initial
 Insulation resistance: 100 Mohms min.
 Dielectric withstanding voltage: 500 VAC for 1 minute
 Temperature Rating: Operating temperature: -20°C to +70°C
 Environmental: Lead free, RoHS compliant



UNLESS OTHERWISE SPECIFIED
 ALL DIMENSIONS ARE INCHES [MM]
 TOLERANCES: EXCEPT AS NOTED
 INCHES: .X ± .10 ØXX ± .015
 .XX ± .020 ØXXX ± .010
 .XXX ± .015

ADAM TECH
 909 Railway Avenue, Union, NJ 07083
 Phone: 908-687-5000 Fax: 908-687-5710

APPROVALS	DATE	TITLE
DRAWN AY	2/12/14	DC POWER JACK, 0.65, 1.00, 1.30mm CENTER PIN
CHECKED GH	2/12/14	
APPROVED		

SIZE	PART NO.	REV.
X	ADC-007-X-WT	

REF.	SCALE:	WTS	SHEET	1 OF 1