

6

5

4

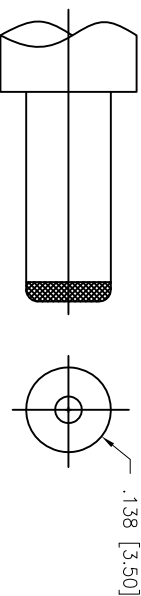
3

2

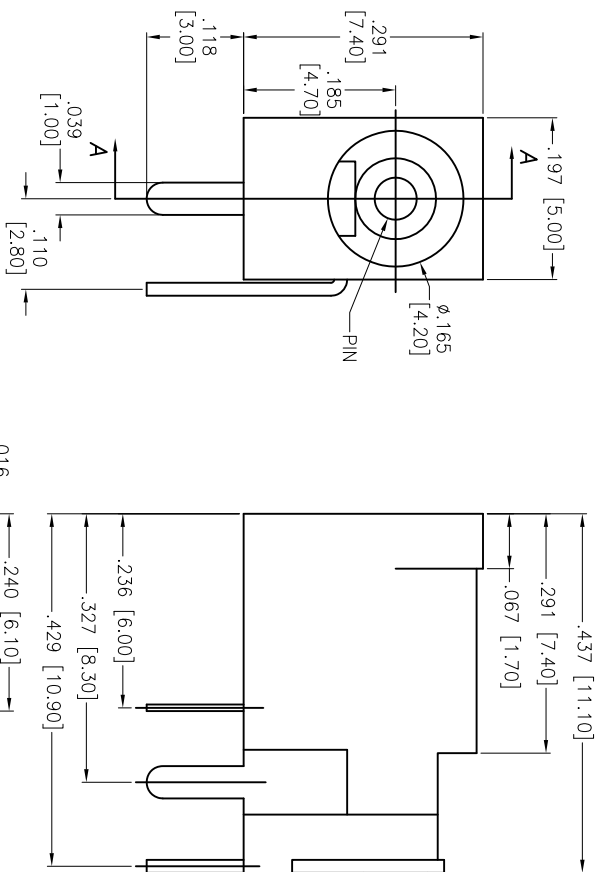
1

APPROVED: \_\_\_\_\_  
DATE: \_\_\_\_\_ TITLE: \_\_\_\_\_

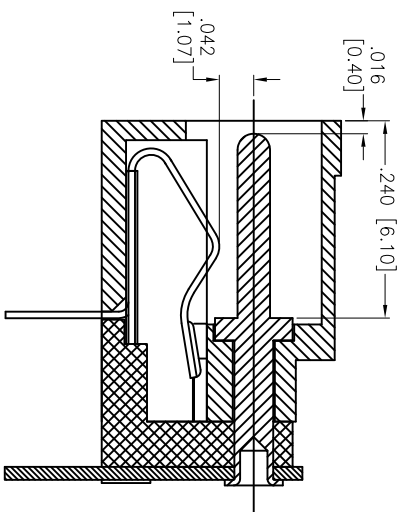
Rev	AWO #	Description	Date	Appr
-		RELEASED	12/10/04	
A		ADDED ROHS TO SPECS	03/09/05	
B		REVISED DIM.	3/23/09	
C		REVISED SPEC.	10/21/13	AY/GH
D		ADDED DIM.	12/24/13	TW/GD



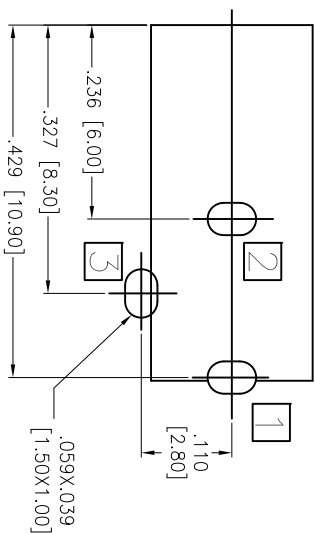
DC MATE PLUG



PART NO.	PIN
ADC-007-3	Ø.039 [1.00]
ADC-007-4	Ø.051 [1.30]
ADC-007-8	Ø.026 [0.65]



SECTION A-A



RECOMMENDED PCB LAYOUT

**SPECIFICATIONS:**

**Material:**  
 Insulator: PBT, Glass reinforced, rated UL 94V-0  
 Insulator color: Black  
 Center Pin: Copper Alloy, Nickel plated  
 Spring: Stainless steel  
 Contacts: Brass

**Plating:**  
 Silver over Nickel underplate

**Electrical:**  
 Operating voltage: 30 VDC max.  
 Current rating: 1 Amp max.  
 Contact resistance: 50 mohms max. initial  
 Insulation resistance: 100 Mohms min.  
 Dielectric withstanding voltage: 500 VAC for 1 minute

**Temperature Rating:**  
 Operating temperature: -20°C to +70°C

**Environmental:**  
 Lead free, RoHS compliant



# ADAM TECH

909 Railway Avenue, Union, NJ 07083  
 Phone: 908-687-5000 Fax: 908-687-5710

DC POWER JACK, 0.65mm, 1.00mm, 1.30mm CENTER PIN

UNLESS OTHERWISE SPECIFIED ALL DIMENSIONS ARE INCHES [MM]		TOLERANCES EXCEPT AS NOTED	
INCHES		HOLDERS	
.X	± .10	Ø.X	± .10
.XX	± .020	Ø.XXX	± .015
.XXX	± .015	Ø.XXX	± .010
APPROVALS		DATE	
DRAWN	SS	10/4/04	
CHECKED			
APPROVED			
SIZE	PART NO.	REV.	
X	ADC-007-X	D	
REF:	S0002C	SCALE:	NIS
		SHEET	1 OF 1

6

5

4

3

2

1