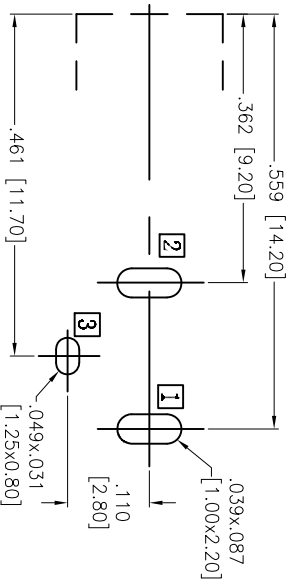
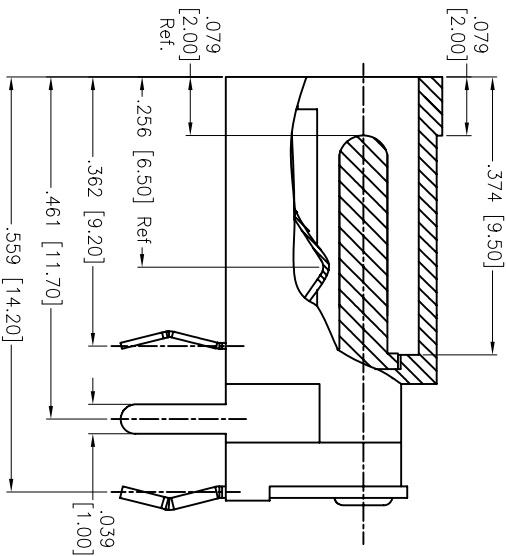
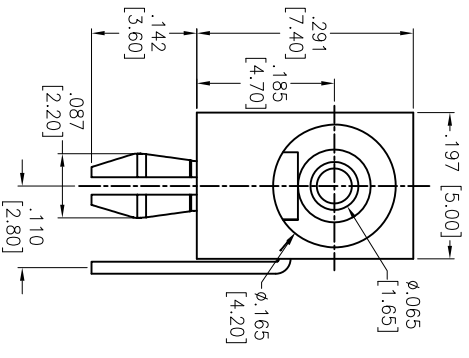
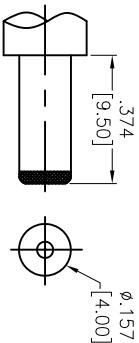


APPROVED: _____
 DATE: _____ TITLE: _____

Rev	AWO #	Description	Date	Appr
-		RELEASED	07/02/13	
A		REVISED SPEC.	8/28/13	AY

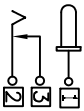


RECOMMENDED PCB LAYOUT



DC MATE PLUG

CIRCUIT



ADAM TECH

909 Railway Avenue, Union, NJ 07083
 Phone: 908-687-5000 Fax: 908-687-5710

DC POWER JACK, 1.65mm CENTER PIN

SPECIFICATIONS:
 Material:
 Insulator: PA66, rated UL 94V-0
 Insulator color: Black
 Center Pin: Copper Alloy, Nickel plated
 Contacts: Copper Alloy
 Spring: Stainless Steel, Silver plated
 Plating:
 Silver over Nickel underplate
 Electrical:
 Operating voltage: 20 VDC max.
 Current rating: 3 Amp max.
 Contact resistance: 50 mohms max. initial
 Insulation resistance: 100 Mohms min.
 Dielectric withstanding voltage: 500 VAC for 1 minute
 Temperature Rating:
 Operating temperature: -40°C to +85°C
 Environmental:
 Lead free, RoHS compliant



UNLESS OTHERWISE SPECIFIED ALL DIMENSIONS ARE INCHES [MM]	
TOLERANCES: EXCEPT AS NOTED	
INCHES	HOLDS
.X ± .10	ØXX ± .10
.XX ± .020	ØXXX ± .015
.XXX ± .015	ØXXXX ± .010
APPROVALS	DATE
DRAWN TW	07/02/13
CHECKED EH	07/02/13
APPROVED	

TITLE		REV.	
DC POWER JACK, 1.65mm CENTER PIN		A	
SIZE	PART NO.	SCALE:	SHEET 1 OF 1
X	ADC-007B-9-RT	NTS	
REF:	S00002C		