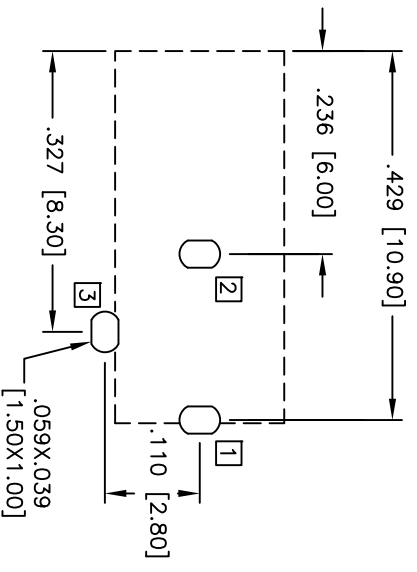
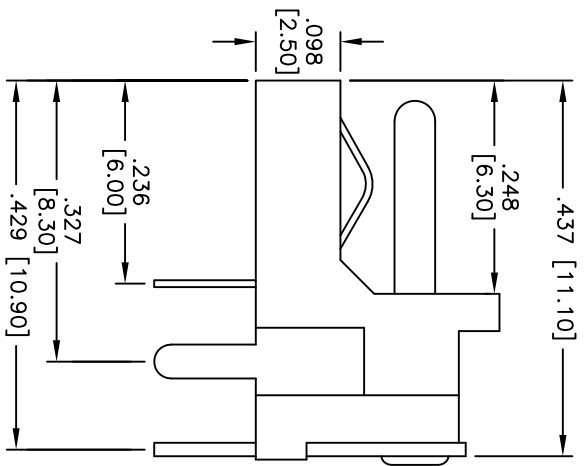
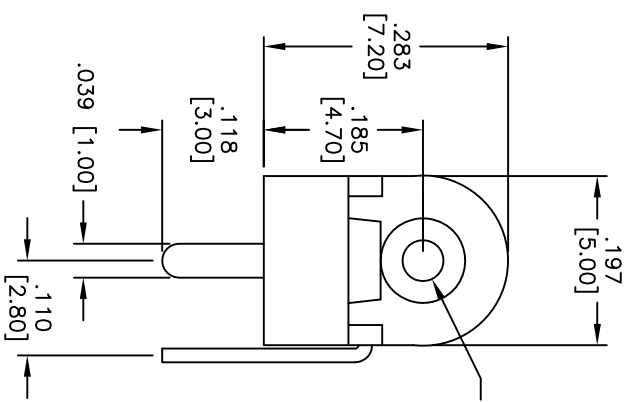


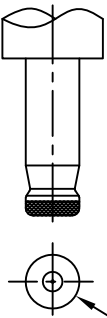
Rev	AWO #	Description	Date	Appr
-		RELEASED	12/10/04	
A		REDRAWN	5/04/09	
B		ADDED DIM.	3/19/10	

APPROVED: _____ TITLE: _____
 DATE: _____

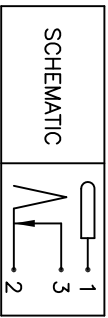


RECOMMENDED PCB LAYOUT
(TOP VIEW)

PART NO.	CENTER PIN DIA.	DC PLUG O.D.
ADC-009-3	.039 [1.00]	.138 [3.50]
ADC-009-4	.051 [1.30]	.138 [3.50]
ADC-009-8	.026 [0.65]	.093 [2.35]



DC MATE PLUG



SCHEMATIC

SPECIFICATIONS:

Material:
 Insulator: PBT, Glass reinforced, rated UL 94V-0
 Insulator color: Black
 Center Pin: Brass, Nickel plated
 Contacts: Copper Alloy
 Plating:
 Silver over Nickel underplate

Electrical:
 Operating voltage: 30 VDC max.
 Current rating: 1 Amp max.
 Contact resistance: 50 mohms max.
 Insulation resistance: 100 Mohms min.
 Dielectric withstanding voltage: 500 VAC for 1 minute
 Temperature Rating:
 Operating temperature: -20°C to +70°C

Environmental:
 Lead free, RoHS compliant
 Recommended soldering temp: 235°C for 5 sec.



6 5 4 3 2 1

UNLESS OTHERWISE SPECIFIED ALL DIMENSIONS ARE INCHES [MM] TOLERANCES: EXCEPT AS NOTED INCHES		HOLDS	
X	± .10	ØX	± .10
XX	± .020	ØXX	± .015
XXX	± .015	ØXXX	± .010
APPROVALS		DATE	
DRAWN	DY	3/19/10	
CHECKED			
APPROVED			

ADAM TECH
 909 Railway Avenue, Union, NJ 07083
 Phone: 908-687-5000 Fax: 908-687-5710

TITLE		DC POWER JACK, 1.00mm, 1.30mm, 0.65mm CENTER PIN	
SIZE	PART NO.	SCALE	REV.
X	ADC-009-X	NTS	B
REF:	S0002C	SHEET	1 OF 1