

6

5

4

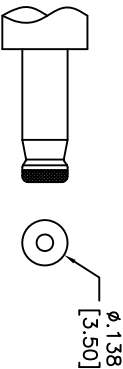
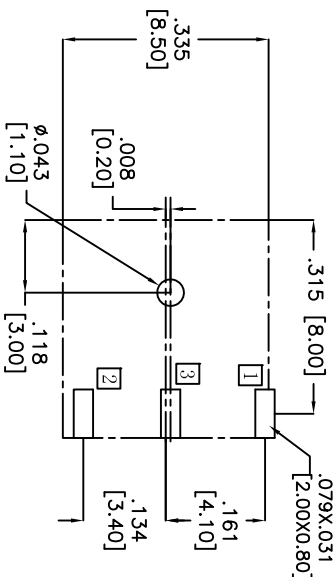
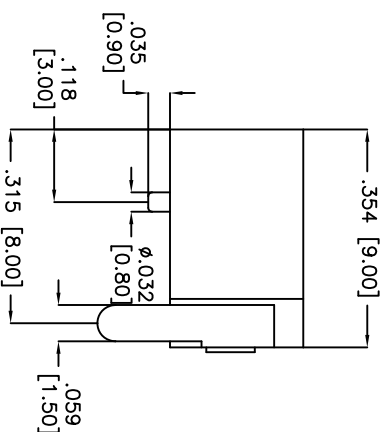
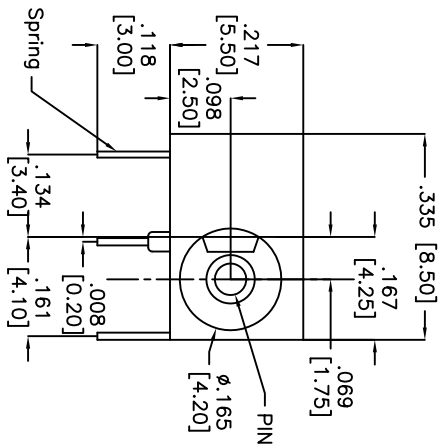
3

2

1

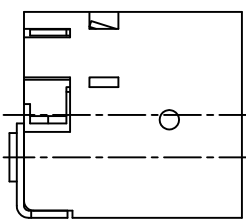
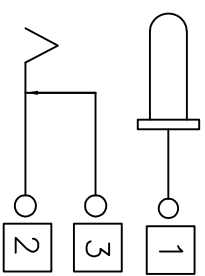
APPROVED: \_\_\_\_\_  
 DATE: \_\_\_\_\_ TITLE: \_\_\_\_\_

Rev	AWO #	Description	Date	Appr
-		RELEASED	12/10/04	
B		REDRAWN	12/23/08	
C		REVISED DIM.	11/26/10	
D		REVISED LAYOUT & SPEC.	11/16/12	



Recommended PCB Layout  
 (BOTTOM VIEW)

PART NO.	X
ADC-011-3	Ø.039 [1.00]
ADC-011-4	Ø.051 [1.30]



**SPECIFICATIONS:**

- Material: Insulator: PBT, Glass reinforced, rated UL 94V-0
- Insulator color: Black
- Center Pin: Copper Alloy, Nickel plated
- Contacts: Brass
- Spring: Stainless Steel, Silver plated
- Plating: Silver over Nickel underplate
- Electrical: Operating voltage: 20 VDC max.
- Current rating: 2 Amp max.
- Contact resistance: 50 mohms max. initial
- Insulation resistance: 100 Mohms min.
- Dielectric withstanding voltage: 500 VAC for 1 minute
- Temperature Rating: Operating temperature: -20°C to +70°C
- Environmental: Lead free, RoHS compliant



UNLESS OTHERWISE SPECIFIED  
 ALL DIMENSIONS ARE INCHES [MM]  
 TOLERANCES: EXCEPT AS NOTED  
 INCHES Holes ±.10  
 .X ±.10 ØXX ±.10  
 .XX ±.020 ØXXX ±.015  
 .XXX ±.015 ØXXXX ±.010

**ADAM TECH**

909 Railway Avenue, Union, NJ 07083  
 Phone: 908-687-5000 Fax: 908-687-5710

TITLE: DC POWER JACK, 1.00mm, 1.30mm CENTER PIN

APPROVALS	DATE	SIZE	PART NO.	REV.
DRAWN	SS	12/10/04	ADC-011-X	D
CHECKED				
APPROVED				

REF.	SCALE	SHEET	OF
S00002C	NTS	1	1

6

5

4

3

2

1