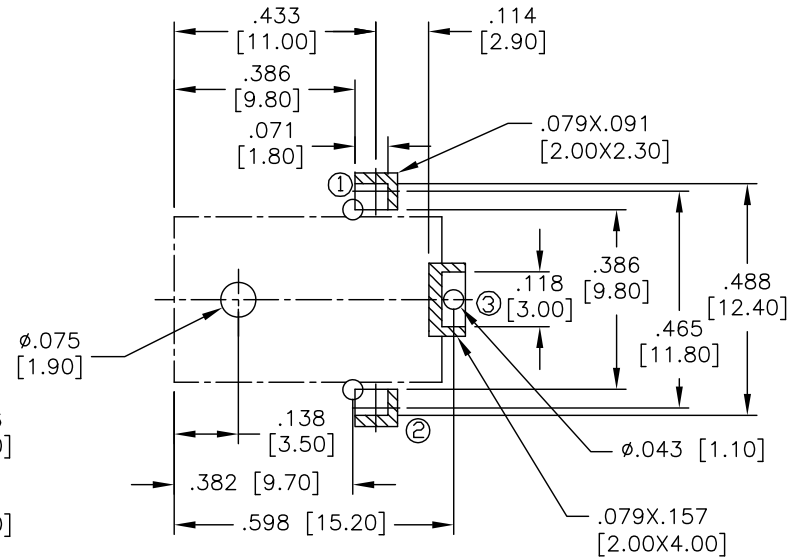
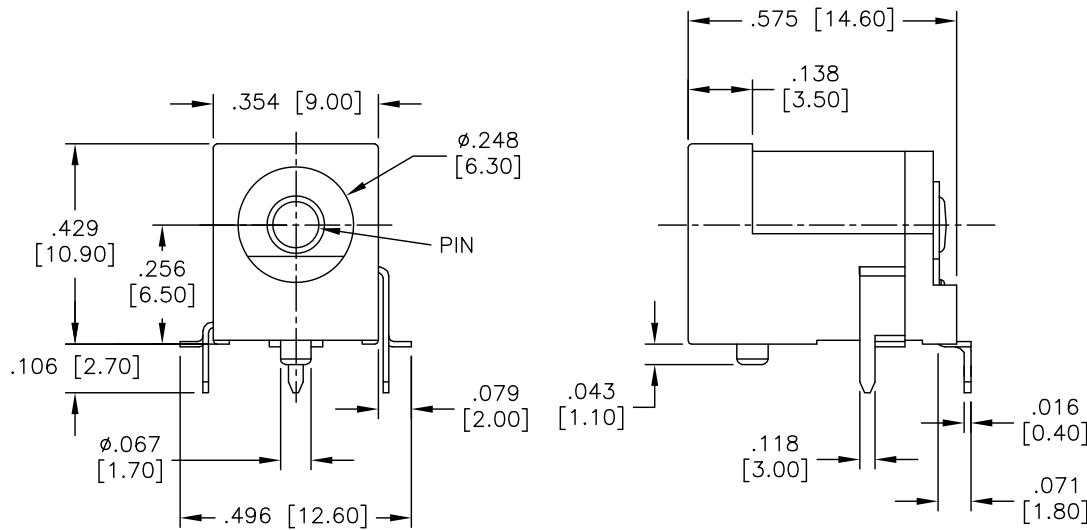


APPROVED: _____
 DATE: _____ TITLE: _____

| Rev | AWO # | Description | Date | Appr |
|-----|-------|---------------|----------|-------|
| - | | RELEASED | 12/10/04 | |
| A | | REDRAWN | 5/04/09 | |
| B | | REVISED SPEC. | 2/21/12 | |
| C | | ADDED DIM. | 1/8/16 | AY/YC |



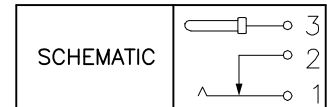
RECOMMENDED PCB LAYOUT
(TOP VIEW)

SPECIFICATIONS:

Material:
 Insulator: Hi-temp thermoplastic, rated UL 94V-0
 Insulator color: Black
 Center Pin: Brass, Nickel plated
 Contacts: Copper Alloy
 Plating:
 Matte Tin over Copper underplate overall
 Electrical:
 Voltage rating: 50 VDC max.
 Current rating: 5 Amp max.
 Contact resistance: 50 mohms max.
 Insulation resistance: 100 Mohms min.
 Dielectric withstanding voltage: 500 VAC for 1 minute
 Temperature Rating:
 Operating temperature: -25°C to +85°C
 Environmental:
 Lead free, RoHS compliant



| PART NO. | CENTER PIN DIA. |
|-----------|-----------------|
| ADC-015-1 | .079 [2.00] |
| ADC-015-2 | .098 [2.50] |



| | | | |
|---|-------------|---|--|
| UNLESS OTHERWISE SPECIFIED ALL DIMENSIONS ARE INCHES [MM] TOLERANCES: EXCEPT AS NOTED | | ADAM TECH 909 Rahway Avenue, Union, NJ 07083 Phone: 908-687-5000 Fax: 908-687-5710 | |
| INCHES HOLES | | | |
| .X ± .10 | ∅X ± .10 | TITLE DC POWER JACK, SMT TYPE, 2.00mm, 2.50mm CENTER PIN | |
| .XX ± .020 | ∅XX ± .015 | | |
| .XXX ± .015 | ∅XXX ± .010 | APPROVALS _____ DATE 12/10/04 | |
| DRAWN | SS | SIZE X PART NO. ADC-015-X REV. C | |
| CHECKED | | REF: S00013C SCALE: NTS SHEET 1 OF 1 | |
| APPROVED | | | |