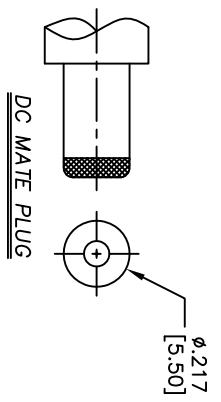
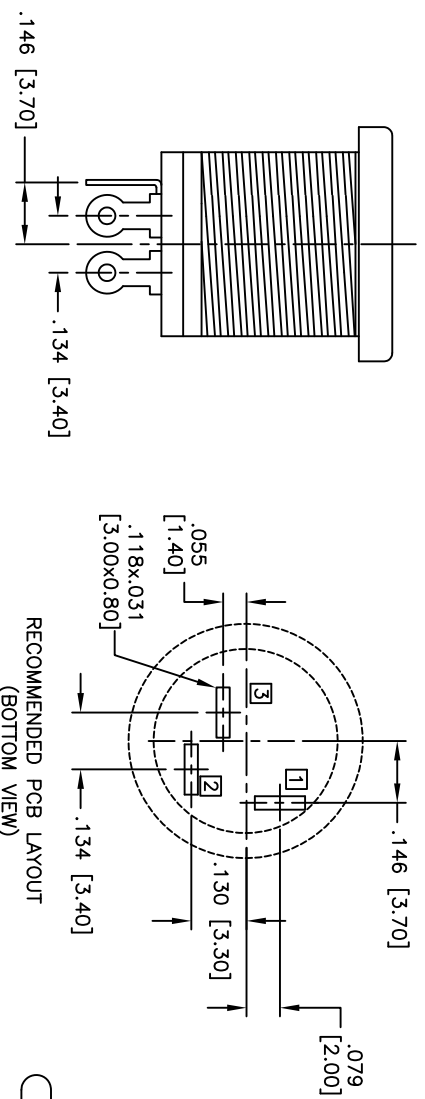
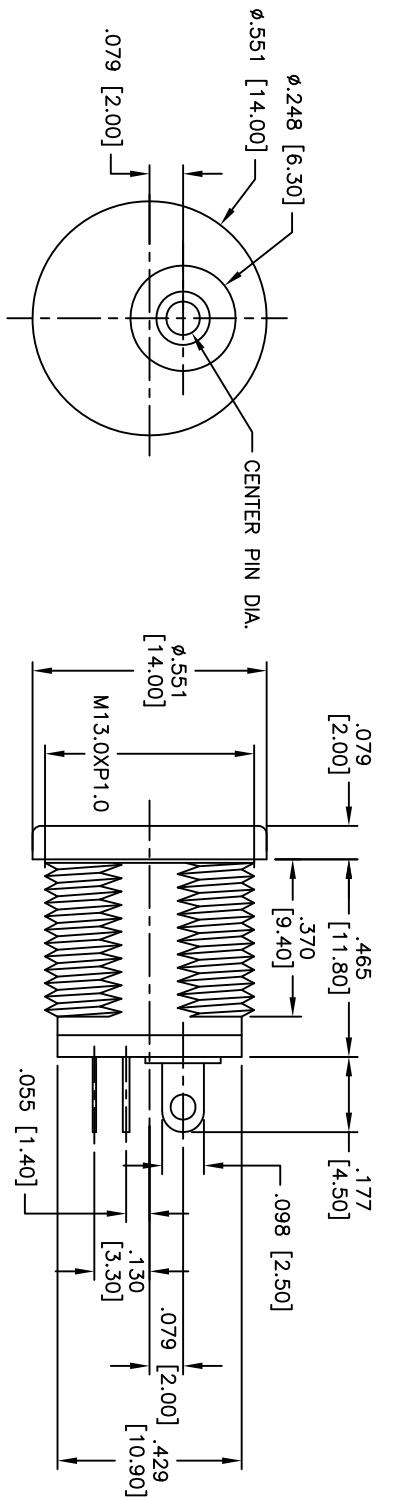
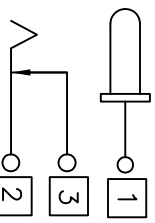


| Rev | AWO # | Description | Date    | Appr |
|-----|-------|-------------|---------|------|
| -   | 11467 | RELEASED    | 7/01/11 |      |

APPROVED: \_\_\_\_\_  
 DATE: \_\_\_\_\_ TITLE: \_\_\_\_\_



| PART NO.  | CENTER PIN DIA. |
|-----------|-----------------|
| ADC-017-1 | 0.079 [2.00]    |
| ADC-017-2 | 0.098 [2.50]    |
| ADC-017-5 | 0.093 [2.35]    |



RECOMMENDED PCB LAYOUT  
(BOTTOM VIEW)

SPECIFICATIONS:

Material: Insulator: PBT, Glass reinforced, rated UL 94V-0  
 Insulator color: Black  
 Center Pin: Copper Alloy, Nickel plated  
 Contacts: Brass  
 Plating:  
 Tin over Copper underplate  
 Rating: DC 20V 2.5A  
 Contact resistance: 50 mohms max.  
 Insulation resistance: 100 Mohms min.  
 Withstand voltage: 500 VAC  
 Temperature Rating:  
 Operating temperature: -40°C to +85°C  
 Environmental:  
 Lead free, RoHS compliant

UNLESS OTHERWISE SPECIFIED  
 ALL DIMENSIONS ARE IN INCHES [MM]  
 TOLERANCES: EXCEPT AS NOTED  
 INCHES HOLE SIZES  
 .X ± .10 ØXX ± .10  
 .XX ± .020 ØXXX ± .015  
 .XXX ± .015 ØXXXX ± .010

**ADAM TECH**  
 909 Railway Avenue, Union, NJ 07083  
 Phone: 908-687-5000 Fax: 908-687-5710

TITLE: DC POWER JACK, 2.00mm, 2.35mm, 2.50mm CENTER PIN

| APPROVALS | DATE |
|-----------|------|
| DRAWN     | DY   |
| CHECKED   |      |
| APPROVED  |      |

| SIZE | PART NO.  | SCALE | SHEET  | REV. |
|------|-----------|-------|--------|------|
| X    | ADC-017-X | NIS   | 1 OF 1 | -    |

