

6

5

4

3

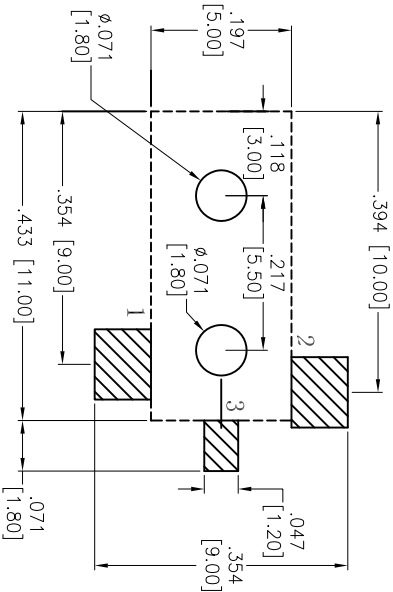
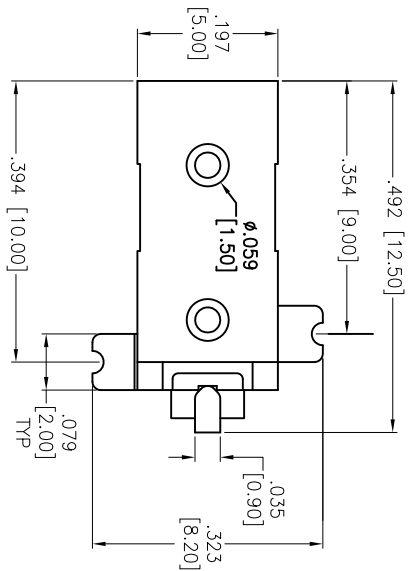
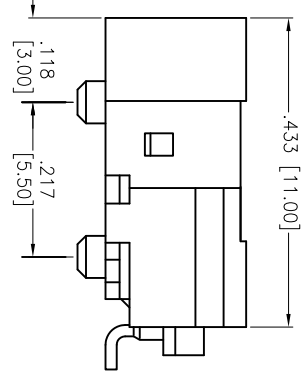
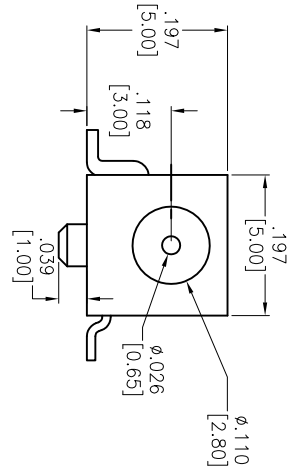
2

1

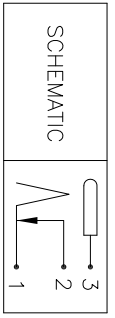
APPROVED: _____

DATE: _____ TITLE: _____

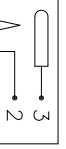
Rev	AWO #	Description	Date	Appr
-		RELEASED	04/06/05	
A		REDRAWN	5/04/09	
B		REVISED DIM.	11/18/11	



RECOMMENDED PCB LAYOUT
(TOP VIEW)



SCHEMATIC



SPECIFICATIONS:

Material:
Insulator: Hi-temp thermoplastic, rated UL 94V-0
Insulator color: Black
Center Pin: Brass, Nickel plated
Contacts: Copper Alloy

Plating:
Silver over Nickel underplate

Electrical:
Operating voltage: 30 VDC max.
Current rating: 0.5 Amp max.
Contact resistance: 50 mohms max.
Insulation resistance: 100 Mohms min.
Dielectric withstanding voltage: 500 VAC for 1 minute

Temperature Rating:
Operating temperature: -25°C to +70°C

Environmental:
Lead free, RoHS compliant

A

B

C

D

A

B

C

D

ADAM TECH

909 Railway Avenue, Union, NJ 07083
Phone: 908-687-5000 Fax: 908-687-5710

TITLE: DC POWER JACK, SMT, 0.65 CENTER PIN

UNLESS OTHERWISE SPECIFIED ALL DIMENSIONS ARE IN INCHES [MM]	
TOLERANCES EXCEPT AS NOTED	
INCHES	HOLDS
.X ± .10	ØXX ± .10
.XX ± .020	ØXXX ± .015
.XXX ± .015	ØXXXX ± .010
APPROVALS	DATE
DRAWN	SS 04/06/05
CHECKED	
APPROVED	

SIZE	PART NO.	REV.
X	ADC-024-8-SMT	B
REF: S00002C	SCALE: NTS	SHEET 1 OF 1



6

5

4

3

2

1