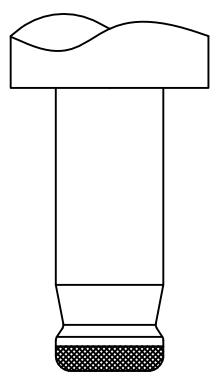
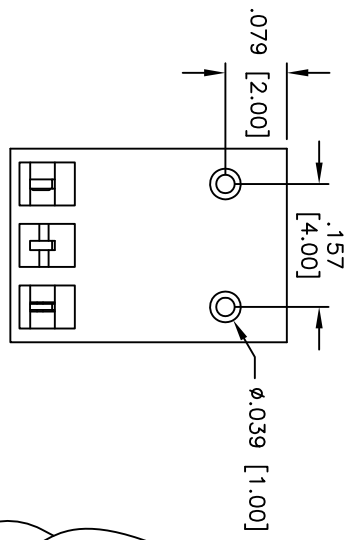
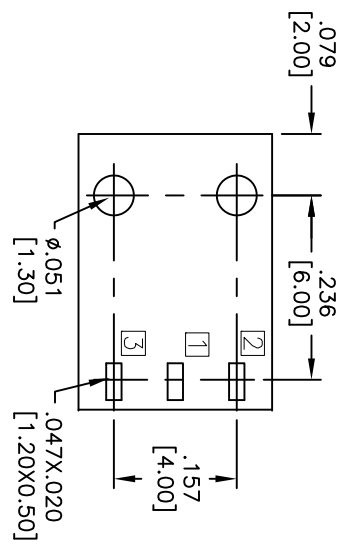
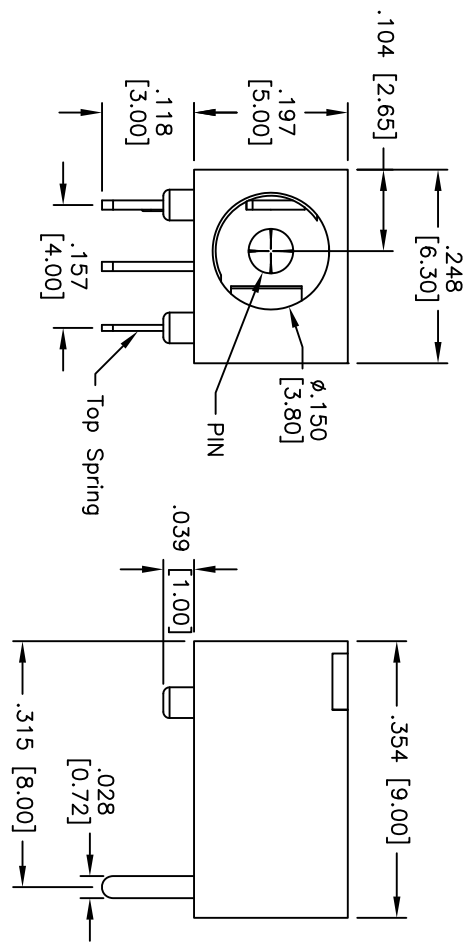


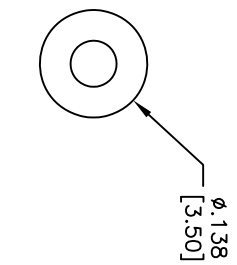
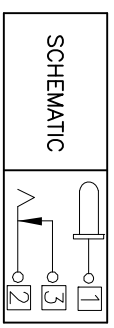
APPROVED: \_\_\_\_\_ TITLE: \_\_\_\_\_  
 DATE: \_\_\_\_\_

Rev	AWO #	Description	Date	Appr
-		RELEASED	12/10/04	
A		REDRAWN	4/23/09	
B		REVISED SPEC.	1/21/13	
C		REVISED SPEC.	7/24/13	



**DC MATE PLUG**

PART NO.	CENTER PIN DIA.
ADC-029-3	.039 [1.00]
ADC-029-4	.051 [1.30]



**SCHMATIC**

**SPECIFICATIONS:**  
 Material: Insulator: PA66, rated UL 94V-0  
 Insulator color: Black  
 Center Pin: Brass  
 Shunt Terminal: Brass  
 Top Spring: Stainless steel  
 Plating: Silver over Nickel underplate  
 Electrical: Operating voltage: 20 VDC max.  
 Current rating: 2 Amp max.  
 Contact resistance: 50 mohms max.  
 Insulation resistance: 100 Mohms min.  
 Dielectric withstanding voltage: 500 VAC for 1 minute  
 Temperature Rating: Operating temperature: -20°C to +70°C  
 Environmental: Lead free, RoHS compliant

**ADAM TECH**  
 909 Railway Avenue, Union, NJ 07083  
 Phone: 908-687-5000 Fax: 908-687-5710

TITLE: **DC POWER JACK, 1.00mm, 1.30mm CENTER PIN**

UNLESS OTHERWISE SPECIFIED ALL DIMENSIONS ARE INCHES [MM]	
TOLERANCES: EXCEPT AS NOTED	
INCHES	
.X	± .10
.XX	± .020
.XXX	± .015
ØXX	± .10
ØXXX	± .015
ØXXX	± .010
APPROVALS	DATE
DRAWN	SS
CHECKED	10/04/04
APPROVED	

SIZE	PART NO.	REV.
X	ADC-029-X	C
REF:	S00002C	
SCALE:	NIS	
SHEET	1 OF 1	

