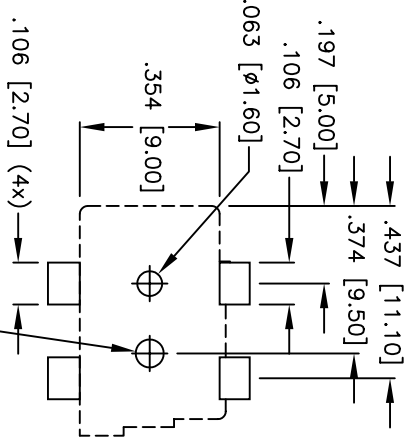
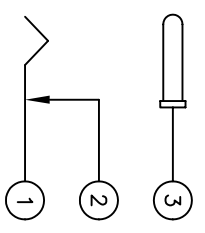
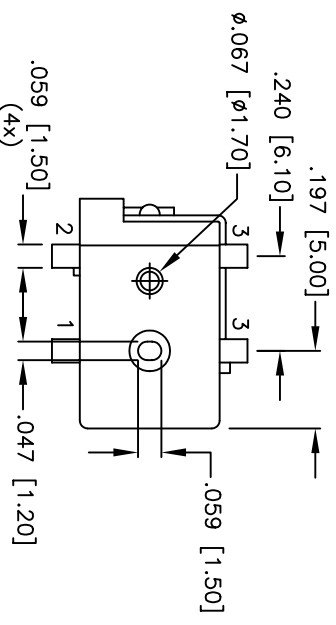
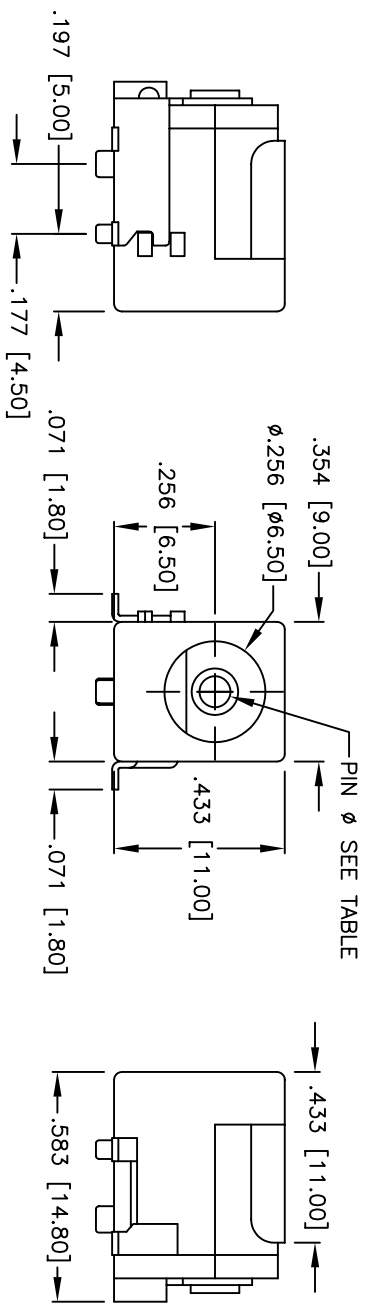


Rev	Description	Date	Appr
-	Preliminary	10/07/98	ELD
A	Revised Part Number	10/12/99	

APPROVED: \_\_\_\_\_  
DATE: \_\_\_\_\_



P/N	CENTER PIN Ø
ADC-010-1-SMT-P	2.00 mm
ADC-010-2-SMT-P	2.50 mm

RECOMMENDED SOLDER PAD  
LAYOUT (COMPONENT SIDE)

SCHEMATIC

**SPECIFICATIONS:**  
**Material:**  
Insulator: Nylon 6/6T, rated UL94V-0  
Contacts: Phosphor Bronze  
Plating: 50 µin nickel over 50 µin copper.  
**Electrical:**  
Operation voltage: 250 VAC max  
Current rating: 1 A max  
Contact resistance: 20 mohm max  
Insulation resistance: 500 Mohm min @ 500 VDC  
Dielectric withstanding voltage: 500 VAC min rms  
**Mechanical:**  
Insertion force: 7 ozs. max  
Withdrawal force: 4 ozs. min  
Applicable soldering processes: Hand, wave, vapor-phase or IR Reflow  
Environment:  
Operating temperature: -65°C to +125°C

**ADAM TECH**

Dimension in IN [MM]

DRAWN : T.D.

DESCRIPTION :  
Surface Mount  
DC Power Jack with Mounting Posts

Tolerance  
(Unless Otherwise Specified)  
XX ± .10  
XXX ± .010

APPR :

PART NUMBER :  
ADC-010-X-SMT-P  
(ADC-010-1-SMT-P SHOWN)

Date: 10/07/98

SCALE : 2:1

SHEET 1  
OF 1 SHEETS

LOG 5250

REF.

REV. A