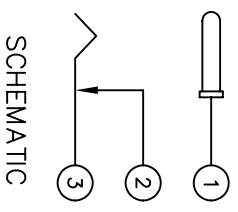
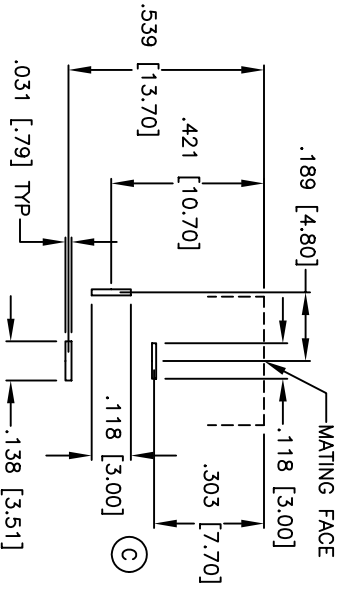
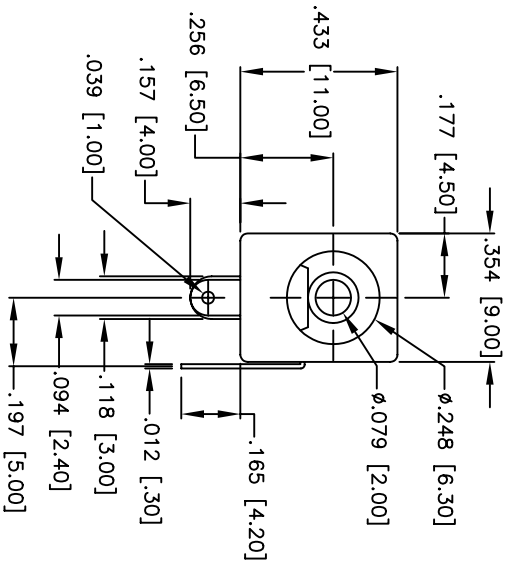
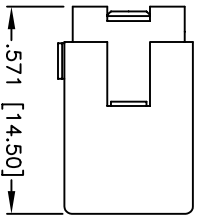
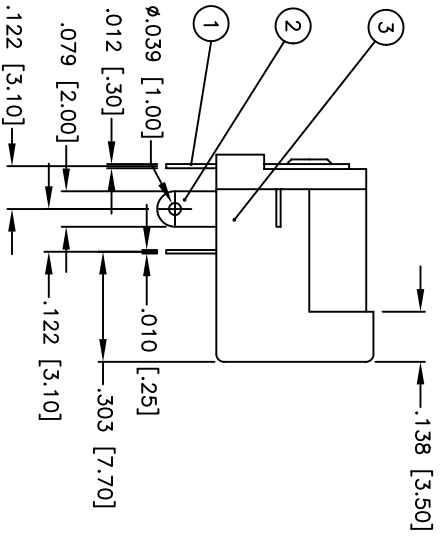


Rev	Description	Date	Appr
0	Released	08/13/97	
A	Modified Spec	12/31/97	JJJ
B	Modified Spec	01/07/98	JJJ
C	Revised PCB Layout	08/26/98	



RECOMMENDED
PCB LAYOUT (COMPONENT SIDE)

SPECIFICATIONS:
Material: Polybutylene Terephthalate (PBT), glass reinforced thermoplastic, rated UL94-V-0, black
Plating: Brass
Insulator: 100 μ m silver plate to MIL-T-10727, Type 1 with 50 μ m nickel underplate to MIL-C-14550
Contacts: Brass
Electrical:
 Operation voltage: 250 VAC max
 Current rating: 1 A max
 Contact resistance: 30 mohm max
 Insulation resistance: 100 Mohm min @ 500 VDC between adjacent contacts (75°F and 50% R.H.)
Dielectric withstanding voltage: 500 VAC min rms
Environmental:
 Operating temperature: -65°C to +85°C

ADAM TECH		DESCRIPTION: 2 mm Center Pin DC Power Jack	
Dimension in IN [MM]		PART NUMBER: ADC-002A-1	
Tolerance (Unless Otherwise Specified) .XX \pm .01 .XXX \pm .005		DRAWN : T.D.	
Date: 08/13/97		APPR : JJJ	
SCALE : NTS		SHEET 1 OF 1 SHEETS	
		LOG	REF.
		5192	C