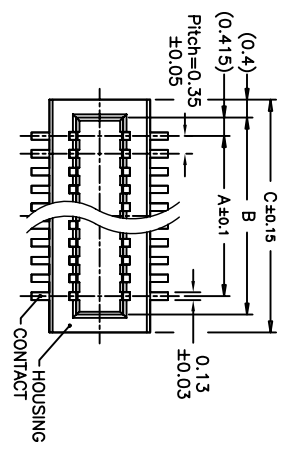


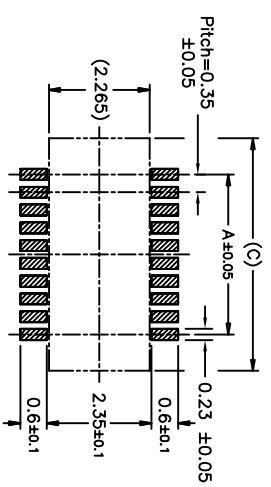
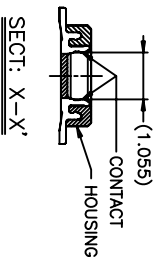
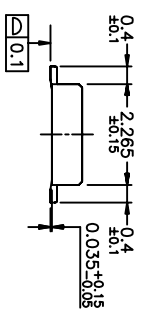
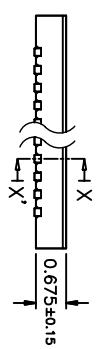
Rev	AWO #	Description	Date	Appr
1		PRELIMINARY RELEASE	8/21/07	

APPROVED: _____

DATE: _____ TITLE: _____



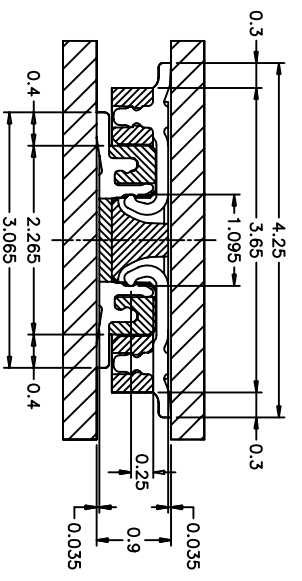
A = [0.35 X (No. of positions / 2) -1]
 B = [0.35 X (No. of positions / 2) +0.48]
 C = [0.35 X (No. of positions / 2) +1.28]



PCB Layout

PRELIMINARY

MATED DRAWING(REF.)



SCALE: 15/1

SPECIFICATIONS:

Material: Insulator: Hi-Temp thermoplastic, rated UL 94V-0

Insulator color: Natural
 Contacts: Phosphor Bronze

Plating: Gold ovr Nickel underplate overall

Electrical: Operating voltage: 50V AC/DC max.
 Current rating: 0.3 Amps max.

Contact resistance: 40 Mohms max. initial
 Insulation resistance: 100 Mohms min.

Dielectric withstanding voltage: 250 VAC for 1 minute
 Temperature Rating: Operating temperature: -25°C to +85°C

Environmental: Lead free, RoHS compliant
 Recommended soldering temp: 260°C for 5 seconds



ADAM TECH

909 Rahway Avenue, Union, NJ 07083
 Phone: 908-687-5000 Fax: 908-687-5710

0.35mm PITCH BOARD TO BOARD MALE
 PLUG SMT, 10 THRU 80 POSITION

UNLESS OTHERWISE SPECIFIED ALL DIMENSIONS ARE INCHES [MM]	
TOLERANCES: EXCEPT AS NOTED	
INCHES	HOLDS
.X ±.10	ØX ±.10
.XX ±.020	ØXXX ±.015
.XXX ±.015	ØXXX ±.010
APPROVALS	DATE
DRAWN	SS
CHECKED	
APPROVED	

TITLE	0.35mm PITCH BOARD TO BOARD MALE PLUG SMT, 10 THRU 80 POSITION
SIZE	X
PART NO.	BB35-P-XX-1
SCALE	NTS
SHEET	1 OF 1