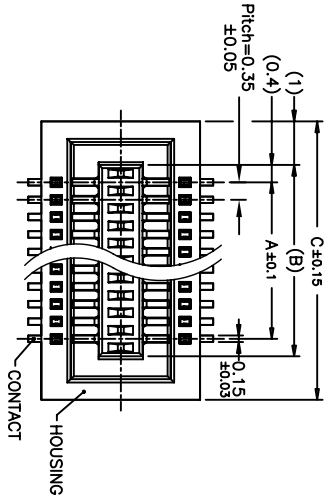
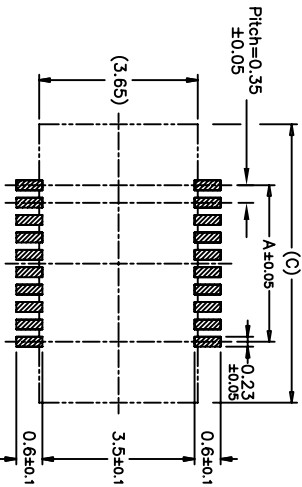
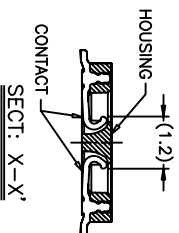
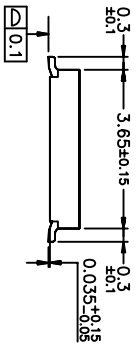
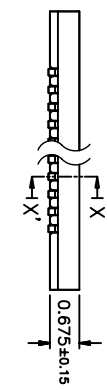


Rev	AWO #	Description	Date	Appr
1		PRELIMINARY RELEASE	8/21/07	

APPROVED: \_\_\_\_\_  
 DATE: \_\_\_\_\_ TITLE: \_\_\_\_\_



A = [0.35 X (No. of positions / 2) - 1]  
 B = [0.35 X (No. of positions / 2) + 0.45]  
 C = [0.35 X (No. of positions / 2) + 2.45]



PCB Layout

PRELIMINARY

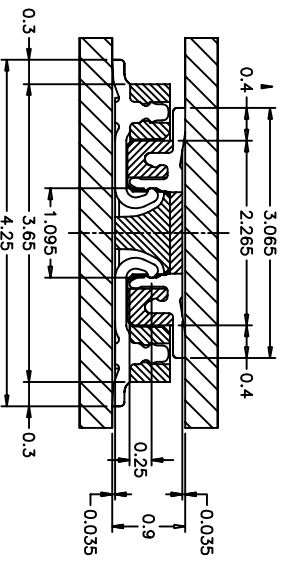
SPECIFICATIONS:

Material: Insulator: Hi-Temp thermoplastic, rated UL 94V-0  
 Insulator color: Natural  
 Contacts: Phosphor Bronze  
 Plating: Gold over Nickel underplate overall

Electrical:  
 Operating voltage: 50V AC/DC max.  
 Current rating: 0.3 Amps max.  
 Contact resistance: 40 mohms max. initial  
 Insulation resistance: 100 Mohms min.  
 Dielectric withstanding voltage: 250 VAC for 1 minute  
 Temperature Rating:  
 Operating temperature: -25°C to +85°C  
 Environmental:  
 Lead free, RoHS compliant  
 Recommended soldering temp: 260°C for 5 seconds



MATED DRAWING(REF.)



UNLESS OTHERWISE SPECIFIED  
 ALL DIMENSIONS ARE INCHES [MM]  
 TOLERANCES: EXCEPT AS NOTED  
 INCHES Holes ±.10  
 .X ±.10 ØXX ±.10  
 .XX ±.020 ØXXX ±.015  
 .XXX ±.015 ØXXXX ±.010

APPROVALS	DATE
DRAWN	SS
CHECKED	
APPROVED	

ADAM TECH

909 Rahway Avenue, Union, NJ 07083  
 Phone: 908-687-5000 Fax: 908-687-5710

0.35mm BOARD TO BOARD FEMALE  
 SOCKET, SMT, 10 THRU 80 POSITION

TITLE	SIZE	PART NO.	REV.
0.35mm BOARD TO BOARD FEMALE SOCKET, SMT, 10 THRU 80 POSITION	X	BB35-S-XX-1	1
SCALE: NTS	SHEET 1 OF 1		