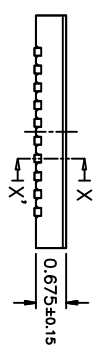
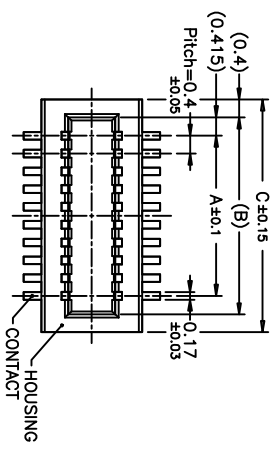
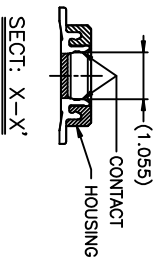
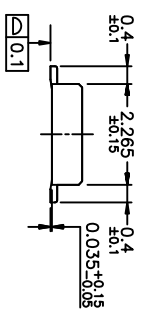


Rev	AWO #	Description	Date	Appr
-	6984	RELEASED	8/7/06	

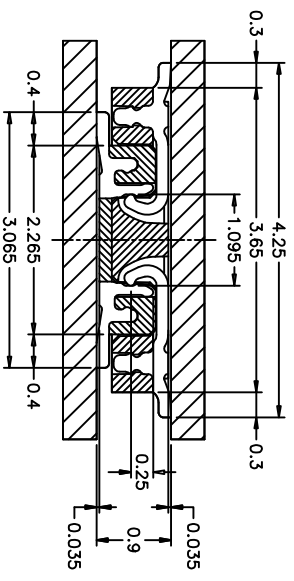
APPROVED: _____
 DATE: _____ TITLE: _____



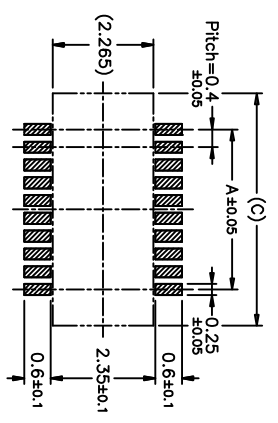
PCB Layout



MATED DRAWING(REF.)



SCALE: 15/1



SPECIFICATIONS:

Material: Insulator: Hi-Temp thermoplastic, rated UL 94V-0
 Insulator color: Natural
 Contacts: Phosphor Bronze
 Plating: Gold over Nickel underplate overall

Electrical: Operating voltage: 50V AC/DC max.
 Current rating: 0.3 Amps max.
 Contact resistance: 40 mohms max. initial
 Insulation resistance: 100 Mohms min.
 Dielectric withstanding voltage: 250 VAC for 1 minute
 Temperature Rating: Operating temperature: -25°C to +85°C
 Environmental: Lead free, RoHS compliant
 Recommended soldering temp: 260°C for 5 seconds



No. of Contacts	Catalog No.	DIM. A	DIM. B	DIM. C
10	BB4-P-10-1	1.6	2.43	3.23
12	BB4-P-12-1	2.0	2.83	3.63
14	BB4-P-14-1	2.4	3.23	4.03
16	BB4-P-16-1	2.8	3.63	4.43
18	BB4-P-18-1	3.2	4.03	4.83
20	BB4-P-20-1	3.6	4.43	5.23
22	BB4-P-22-1	4.0	4.83	5.63
24	BB4-P-24-1	4.4	5.23	6.03
26	BB4-P-26-1	4.8	5.63	6.43
28	BB4-P-28-1	5.2	6.03	6.83
30	BB4-P-30-1	5.6	6.43	7.23
32	BB4-P-32-1	6.0	6.83	7.63
34	BB4-P-34-1	6.4	7.23	8.03
36	BB4-P-36-1	6.8	7.63	8.43
38	BB4-P-38-1	7.2	8.03	8.83
40	BB4-P-40-1	7.6	8.43	9.23
42	BB4-P-42-1	8.0	8.83	9.63
44	BB4-P-44-1	8.4	9.23	10.03
46	BB4-P-46-1	8.8	9.63	10.43
48	BB4-P-48-1	9.2	10.03	10.83
50	BB4-P-50-1	9.6	10.43	11.23
52	BB4-P-52-1	10.0	10.83	11.63
54	BB4-P-54-1	10.4	11.23	12.03
56	BB4-P-56-1	10.8	11.63	12.43
58	BB4-P-58-1	11.2	12.03	12.83
60	BB4-P-60-1	11.6	12.43	13.23
62	BB4-P-62-1	12.0	12.83	13.63
64	BB4-P-64-1	12.4	13.23	14.03
66	BB4-P-66-1	12.8	13.63	14.43
68	BB4-P-68-1	13.2	14.03	14.83
70	BB4-P-70-1	13.6	14.43	15.23
72	BB4-P-72-1	14.0	14.83	15.63
74	BB4-P-74-1	14.4	15.23	16.03
76	BB4-P-76-1	14.8	15.63	16.43
78	BB4-P-78-1	15.2	16.03	16.83
80	BB4-P-80-1	15.6	16.43	17.23

ADAM TECH

909 Rahway Avenue, Union, NJ 07083
 Phone: 908-687-5000 Fax: 908-687-5710

TITLE: .015 [0.40] BOARD TO BOARD MALE PLUG
 SURFACE MOUNT

UNLESS OTHERWISE SPECIFIED ALL DIMENSIONS ARE MM	
TOLERANCES: EXCEPT AS NOTED	
INCHES	HOLDS
.X ± .10	ØXX ± .10
.XX ± .020	ØXXX ± .015
.XXX ± .015	ØXXXX ± .010
APPROVALS	DATE
DRAWN	SS
CHECKED	
APPROVED	

SIZE	PART NO.	REV.
X	BB4-P-XX-1	-
REF:	SCALE: NTS	SHEET 1 OF 1