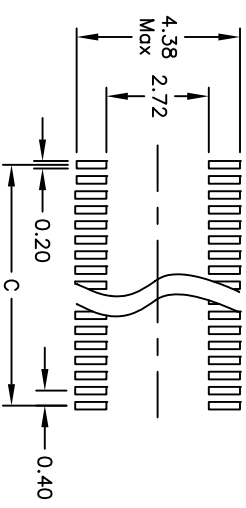
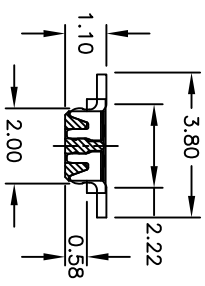
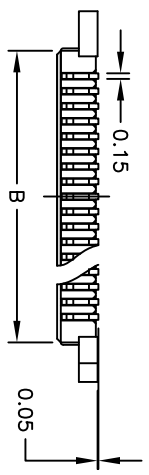
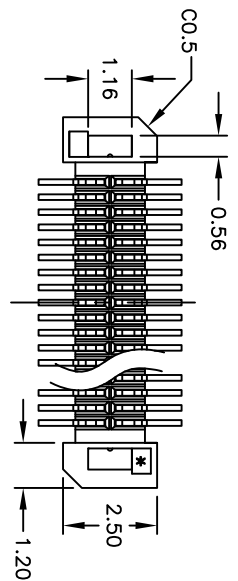
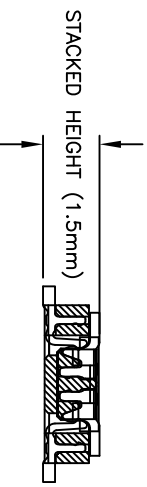
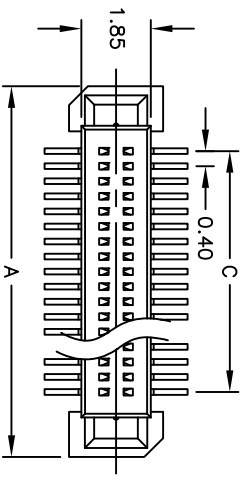


Rev	AWO #	Description	Date	Appr
-		RELEASED	1/18/10	

APPROVED: _____
 DATE: _____ TITLE: _____



RECOMMENDED PCB LAYOUT
(TOP VIEW)



No. of Contacts	Catalog No.	DIM. A	DIM. B	DIM. C
10	BB4-P-10-2	5.10	2.95	1.60
12	BB4-P-12-2	5.50	3.35	2.00
14	BB4-P-14-2	5.90	3.75	2.40
16	BB4-P-16-2	6.30	4.15	2.80
20	BB4-P-20-2	7.10	4.95	3.60
22	BB4-P-22-2	7.50	5.35	4.00
24	BB4-P-24-2	7.90	5.75	4.40
26	BB4-P-26-2	8.30	6.15	4.80
30	BB4-P-30-2	9.10	6.95	5.60
34	BB4-P-34-2	9.90	7.75	6.40
40	BB4-P-40-2	11.10	8.95	7.60
50	BB4-P-50-2	13.10	10.95	9.60
60	BB4-P-60-2	15.10	12.95	11.60
70	BB4-P-70-2	17.10	14.95	13.60
72	BB4-P-72-2	17.50	15.35	14.00
80	BB4-P-80-2	19.10	16.95	15.60
90	BB4-P-90-2	21.10	18.95	17.60
100	BB4-P-100-2	23.10	20.95	19.60

SPECIFICATIONS:

Material: Insulator: Hi-Temp thermoplastic, rated UL 94V-0

Insulator color: Natural
 Contacts: Phosphor Bronze

Plating: Gold over Nickel underplate overall

Electrical: Current rating: 0.3 Amps.

Contact resistance: 90 mohms max. @ AC 1mA.
 Insulation resistance: 100 Mohms min. @ DC 100V

Dielectric withstanding voltage: 100 VAC for 1 minute
 Temperature Rating: Operating temperature: -25°C to +85°C

Environmental: Lead free, RoHS compliant

Recommended soldering temp: 260°C for 5 seconds



ADAM TECH

909 Rahway Avenue, Union, NJ 07083
 Phone: 908-687-5000 Fax: 908-687-5710

TITLE: .015 [0.40] BOARD TO BOARD MALE PLUG
 SURFACE MOUNT

UNLESS OTHERWISE SPECIFIED ALL DIMENSIONS ARE IN MM	
TOLERANCES: EXCEPT AS NOTED	
INCHES	HOLDS
.X ± .10	ØXX ± .10
.XX ± .020	ØXXX ± .015
.XXX ± .015	ØXXXX ± .010
APPROVALS	DATE
DRAWN: DY	1/18/10
CHECKED:	
APPROVED:	

SIZE: X	PART NO.: BB4-P-XX-2
REF: S00068T	SCALE: NTS
SHEET 1 OF 1	REV: -