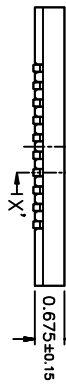
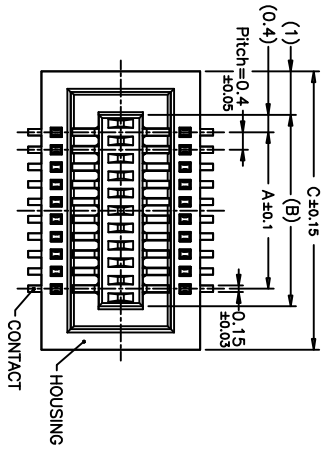
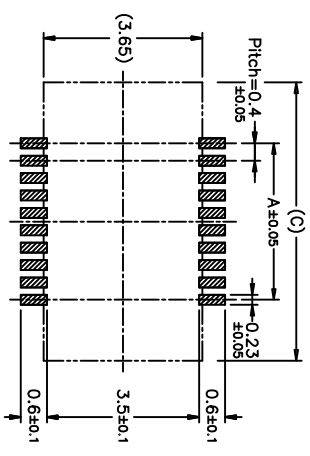
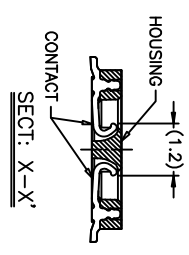
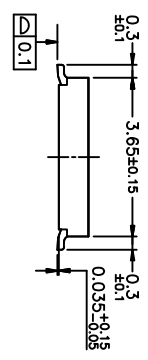


Rev	AWO #	Description	Date	Appr
-	6984	RELEASED	8/17/06	

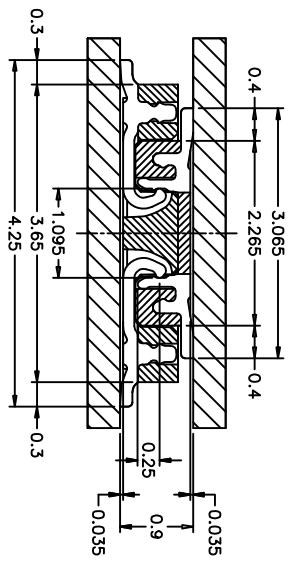
APPROVED: _____
 DATE: _____ TITLE: _____



PCB Layout



MATED DRAWING(REF.)



No. of Contacts	Catalog No.	DIM.		
		A	B	C
10	BB4-S-10-1	1.6	2.4	4.4
12	BB4-S-12-1	2.0	2.8	4.8
14	BB4-S-14-1	2.4	3.2	5.2
16	BB4-S-16-1	2.8	3.6	5.6
18	BB4-S-18-1	3.2	4.0	6.0
20	BB4-S-20-1	3.6	4.4	6.4
22	BB4-S-22-1	4.0	4.8	6.8
24	BB4-S-24-1	4.4	5.2	7.2
26	BB4-S-26-1	4.8	5.6	7.6
28	BB4-S-28-1	5.2	6.0	8.0
30	BB4-S-30-1	5.6	6.4	8.4
32	BB4-S-32-1	6.0	6.8	8.8
34	BB4-S-34-1	6.4	7.2	9.2
36	BB4-S-36-1	6.8	7.6	9.6
38	BB4-S-38-1	7.2	8.0	10.0
40	BB4-S-40-1	7.6	8.4	10.4
42	BB4-S-42-1	8.0	8.8	10.8
44	BB4-S-44-1	8.4	9.2	11.2
46	BB4-S-46-1	8.8	9.6	11.6
48	BB4-S-48-1	9.2	10.0	12.0
50	BB4-S-50-1	9.6	10.4	12.4
52	BB4-S-52-1	10.0	10.8	12.8
54	BB4-S-54-1	10.4	11.2	13.2
56	BB4-S-56-1	10.8	11.6	13.6
58	BB4-S-58-1	11.2	12.0	14.0
60	BB4-S-60-1	11.6	12.4	14.4
62	BB4-S-62-1	12.0	12.8	14.8
64	BB4-S-64-1	12.4	13.2	15.2
66	BB4-S-66-1	12.8	13.6	15.6
68	BB4-S-68-1	13.2	14.0	16.0
70	BB4-S-70-1	13.6	14.4	16.4
72	BB4-S-72-1	14.0	14.8	16.8
74	BB4-S-74-1	14.4	15.2	17.2
76	BB4-S-76-1	14.8	15.6	17.6
78	BB4-S-78-1	15.2	16.0	18.0
80	BB4-S-80-1	15.6	16.4	18.4

SPECIFICATIONS:

Material: Insulator: Hi-Temp thermoplastic, rated UL 94V-0
 Insulator color: Natural
 Contacts: Phosphor Bronze
 Plating: Gold ovr Nickel underplate overall

Electrical:
 Operating voltage: 50V AC/DC max.
 Current rating: 0.3 Amps max.
 Contact resistance: 40 mohms max. initial
 Insulation resistance: 100 Mohms min.
 Dielectric withstanding voltage: 250 VAC for 1 minute
 Temperature Rating:
 Operating temperature: -25°C to +85°C



Environmental:
 Lead free, RoHS compliant
 Recommended soldering temp: 260°C for 5 seconds

ADAM TECH

909 Rahway Avenue, Union, NJ 07083
 Phone: 908-687-5000 Fax: 908-687-5710

TITLE: .015 [0.40] BOARD TO BOARD SOCKET SURFACE MOUNT

UNLESS OTHERWISE SPECIFIED ALL DIMENSIONS ARE IN MM	
TOLERANCES: EXCEPT AS NOTED INCHES	
.X	±.10
.XX	±.020
.XXX	±.015
.XXX	±.015
ØX	±.10
ØXXX	±.015
ØXXX	±.010
APPROVALS	DATE
DRAWN	SS
CHECKED	
APPROVED	

SIZE	PART NO.	REV.
X	BB4-S-XX-1	
SCALE: NTS	SHEET 1 OF 1	