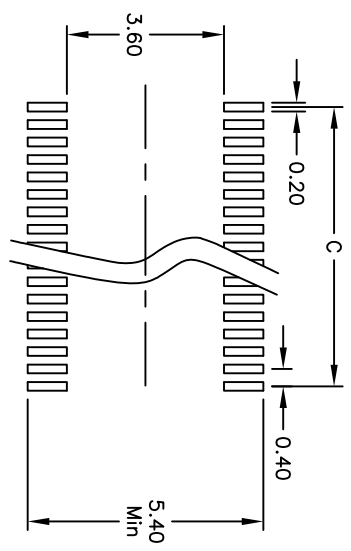
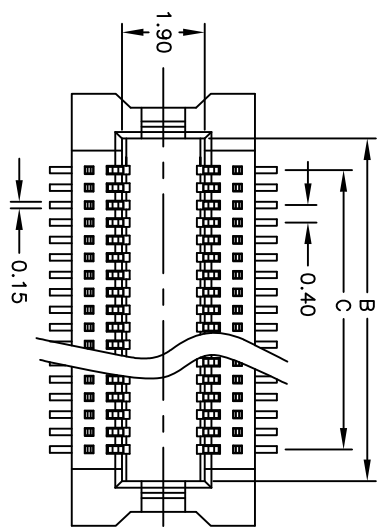
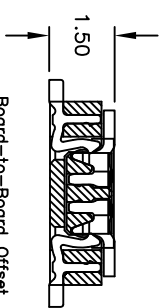
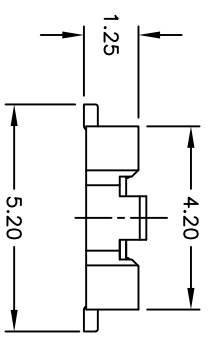
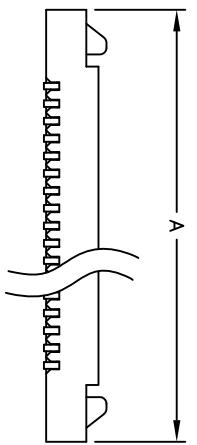


Rev	AWO #	Description	Date	Appr
-		RELEASED	1/18/10	

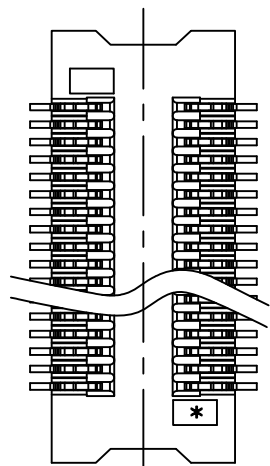
APPROVED: _____
 DATE: _____ TITLE: _____



RECOMMENDED PCB LAYOUT



Board-to-Board Offset
Application Example



SPECIFICATIONS:

Material: Insulator: Hi-Temp thermoplastic, rated UL 94V-0
 Insulator color: Natural
 Contacts: Phosphor Bronze
 Plating: Gold over Nickel underplate overall

Electrical:
 Current rating: 0.5 Amps.
 Contact resistance: 60 mohms max. @ AC 1mA
 Insulation resistance: 50 Mohms min @ DC 100V
 Dielectric withstanding voltage: 100 VAC for 1 minute
 Temperature Rating: Operating temperature: -55°C to +85°C
 Environmental: Lead free, RoHS compliant



Recommended soldering temp: 260°C for 5 seconds

Positions: 10 Thru 100
 A = 0.40 x No. of Positions/2 + 3.10
 B = 0.40 x No. of Positions/2 + 0.95
 C = 0.40 x No. of Positions/2 - 0.40

UNLESS OTHERWISE SPECIFIED ALL DIMENSIONS ARE MM	
TOLERANCES: EXCEPT AS NOTED	
INCHES	
.X	±.10
.XX	±.020
.XXX	±.015
.XXX	±.015
APPROVALS	
DRAWN	DY
CHECKED	
APPROVED	

ADAM TECH
 909 Rahway Avenue, Union, NJ 07083
 Phone: 908-687-5000 Fax: 908-687-5710
 TITLE: .015 [0.40] BOARD TO BOARD SOCKET
 SURFACE MOUNT

SIZE	PART NO.	REV.
X	BB4-S-XX-2	-
REF: S00068T	SCALE: NTS	SHEET 1 OF 1