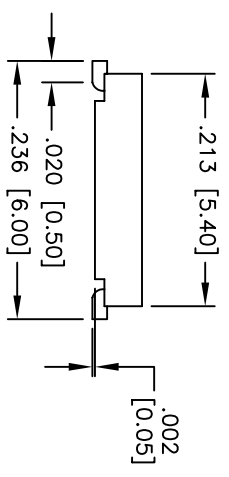
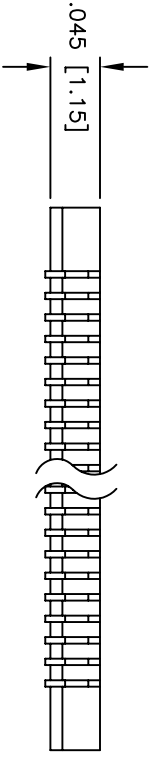
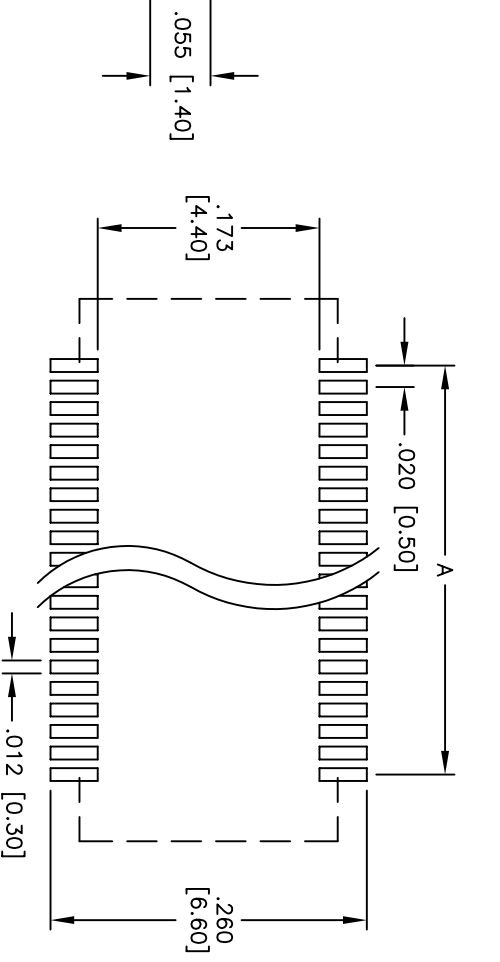
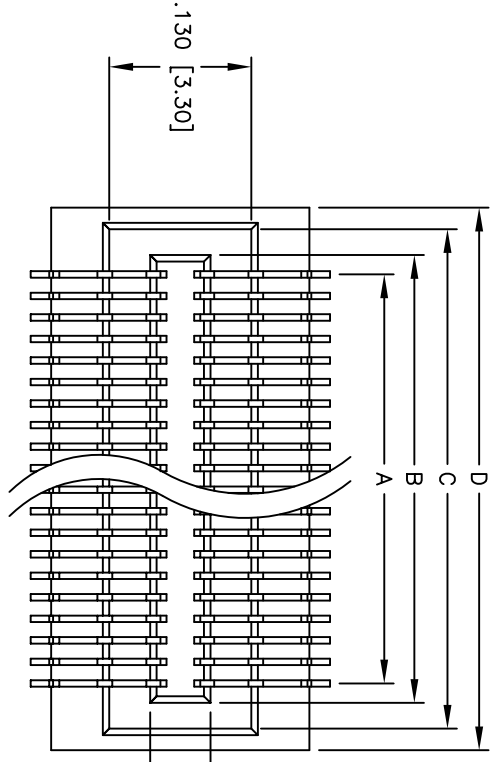


Rev	AWO #	Description	Date	Appr
-		RELEASED	5/23/05	

APPROVED: \_\_\_\_\_  
 DATE: \_\_\_\_\_ TITLE: \_\_\_\_\_



RECOMMENDED PCB LAYOUT

**SPECIFICATIONS:**

- Material: Insulator: LCP, glass reinforced, rated UL 94V-0
- Insulator color: Natural
- Contacts: Phosphor Bronze
- Plating: Gold flash over Nickel underplate overall
- Electrical:
  - Operating voltage: 50 VAC max.
  - Current rating: 0.3 Amps max.
  - Contact resistance: 40 mohms max. initial
  - Insulation resistance: 1,000 Mohms min.
  - Dielectric withstanding voltage: 500 VAC for 1 minute
- Temperature Rating:
  - Operating temperature: -65°C to +155°C
- Environmental:
  - Lead free, RoHS compliant
- Recommended soldering temp: 260°C for 5 seconds

- Positions: 20, 28, 30, 40, 50, 60, 70, 80, & 90
- A = .020 [0.50] x (No. of Contacts - 1) + .035 [0.90]
  - B = .020 [0.50] x (No. of Contacts - 1) + .083 [2.10]
  - C = .020 [0.50] x (No. of Contacts - 1) + .122 [3.10]
  - D = .020 [0.50] x (No. of Contacts - 1) + .122 [3.10]

**ADAM TECH**

909 Railway Avenue, Union, NJ 07083  
 Phone: 908-687-5000 Fax: 908-687-5710

.020 [0.50] BOARD TO BOARD PLUG  
 SURFACE MOUNT

UNLESS OTHERWISE SPECIFIED ALL DIMENSIONS ARE INCHES [MM]		TOLERANCES: EXCEPT AS NOTED	
INCHES		HOLDS	
.X	± .10	ØXX	± .10
.XX	± .020	ØXXX	± .015
.XXX	± .015	ØXXXX	± .010
APPROVALS		DATE	
DRAWN	SS	5/23/05	
CHECKED			
APPROVED			
TITLE		SIZE	PART NO.
.020 [0.50] BOARD TO BOARD PLUG		X	BB5-P-XX
SURFACE MOUNT		REF:	SCALE: NTS
REV.		SHEET 1 OF 1	