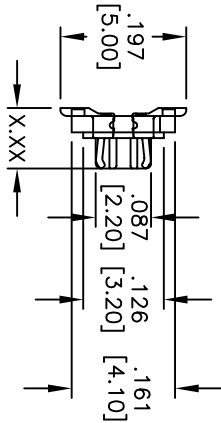
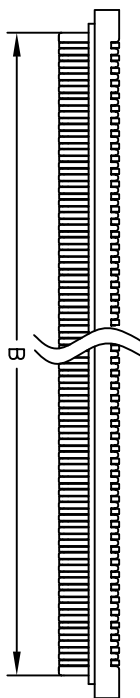
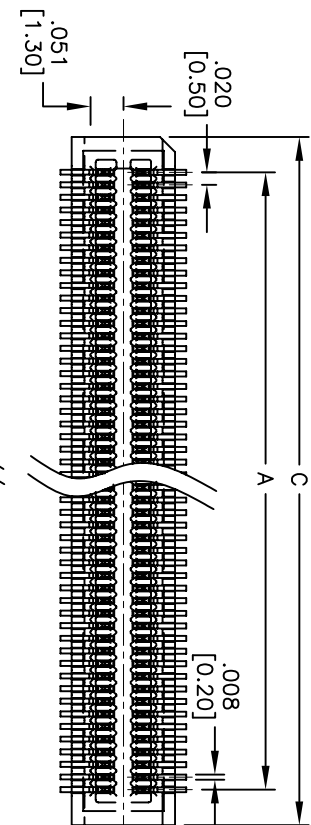


Rev	AWO #	Description	Date	Appr
-		RELEASED	5/4/15	

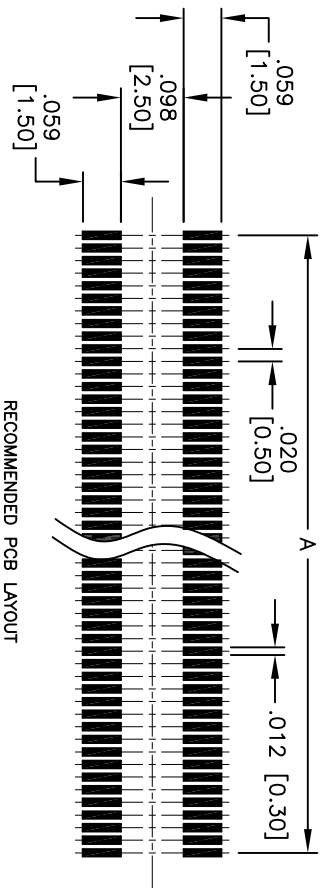
APPROVED: _____

DATE: _____ TITLE: _____



ADAM P/N	DIM. (X.XX)	SOCKET DIM.(X.XX)	Mating Height
BB5-PL-XXX-G-NP-2.40-T/R	.094 [2.40]	.108 [2.74]	.138 [3.50]
BB5-PL-XXX-G-NP-2.40-T/R	.094 [2.40]	.146 [3.70]	.177 [4.50]
BB5-PL-XXX-G-NP-2.74-T/R	.108 [2.74]	.108 [2.74]	.157 [4.00]
BB5-PL-XXX-G-NP-2.74-T/R	.108 [2.74]	.146 [3.70]	.197 [5.00]

Mated with: BB5-SL-XXX-G-NP-X.XX-T/R



RECOMMENDED PCB LAYOUT

SPECIFICATIONS:

- Material: Insulator: HI-Temp thermoplastic, rated UL 94V-0
- Insulator color: Black
- Contacts: Copper Alloy
- Plating: Gold flash over Nickel underplate overall
- Electrical: Operating voltage: 50 VAC max. Current rating: 0.5 Amps max. Contact resistance: 40 mohms max. initial Insulation resistance: 100 Mohms min@ 100V DC Dielectric withstanding voltage: 500 VAC for 1 minute
- Temperature Rating: Operating temperature: -20°C to +105°C
- Environmental: Lead free, RoHS compliant

PACKAGED ON TAPE & REEL

Position: 20 thru 100
 A = .020 [0.50] x (No. of Contacts/2 - 1) + .039 [1.00]
 B = .020 [0.50] x (No. of Contacts/2 - 1) + .110 [2.80]
 C = .020 [0.50] x (No. of Contacts/2 - 1) + .110 [2.80]

ADAM TECH

909 Railway Avenue, Union, NJ 07083
 Phone: 908-687-5000 Fax: 908-687-5710

TITLE: .020 [0.50] PITCH BOARD TO BOARD PLUG CONNECTOR, NO PEG, SMT TYPE

UNLESS OTHERWISE SPECIFIED ALL DIMENSIONS ARE IN INCHES [MM]		TOLERANCES: EXCEPT AS NOTED	
.X	± .10	ØXX	± .10
.XX	± .020	ØXXX	± .015
.XXX	± .015	ØXXXX	± .010
APPROVALS		DATE	
DRAWN	AY	5/4/15	
CHECKED	YC	5/4/15	
APPROVED			
SIZE	PART NO.	REV.	
X	BB5-PL-XXX-G-NP-X.XX-T/R	-	
REF:	S0070T	SCALE:	NIS
		SHEET	1 OF 1