

6

5

4

3

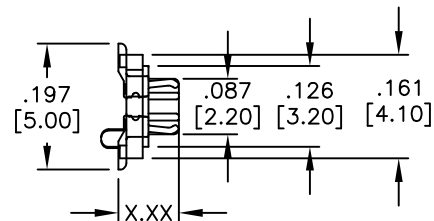
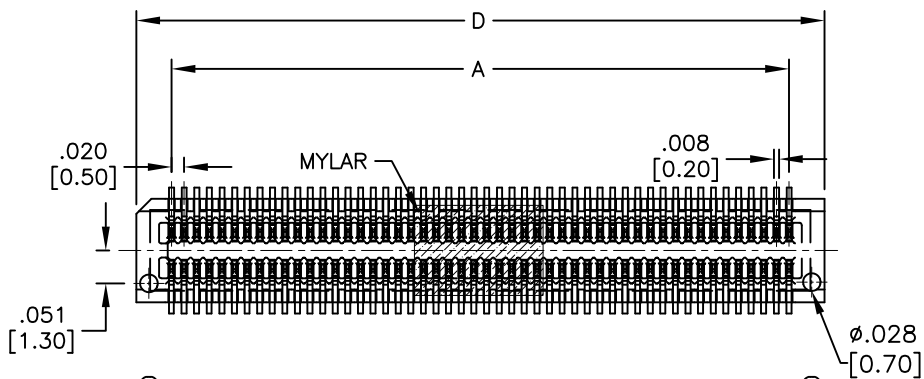
2

1

APPROVED: _____

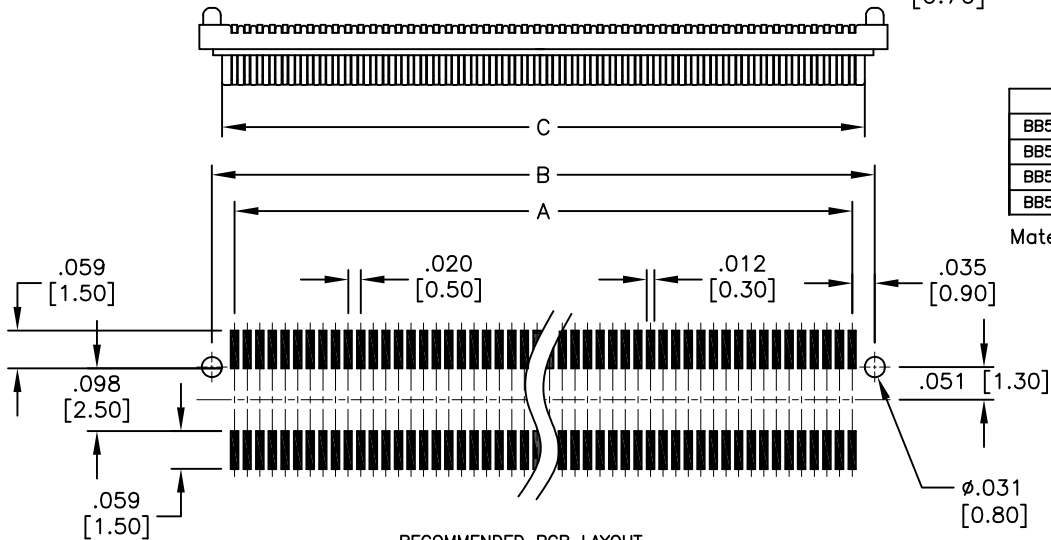
DATE: _____ TITLE: _____

Rev	AWO #	Description	Date	Appr
-		RELEASED	10/20/15	



ADAM P/N	DIM. (X.XX)	SOCKET DIM.(X.XX)	Mating Height
BB5-PL-XXX-G-2.40-KT-T/R	.094 [2.40]	.108 [2.74]	.138 [3.50]
BB5-PL-XXX-G-2.40-KT-T/R	.094 [2.40]	.146 [3.70]	.177 [4.50]
BB5-PL-XXX-G-2.74-KT-T/R	.108 [2.74]	.108 [2.74]	.157 [4.00]
BB5-PL-XXX-G-2.74-KT-T/R	.108 [2.74]	.146 [3.70]	.197 [5.00]

Mated with: BB5-SL-XXX-G-X.XX-KT-T/R



RECOMMENDED PCB LAYOUT

SPECIFICATIONS:

Material:
 Insulator: Hi-Temp thermoplastic, rated UL 94V-0
 Insulator color: Black
 Contacts: Copper Alloy
 Plating:
 Gold flash over Nickel underplate overall
 Electrical:
 Operating voltage: 50 V
 Current rating: 0.5 A
 Contact resistance: 40 mohms max.
 Insulation resistance: 100 Mohms min
 Dielectric withstanding voltage: 500 VAC for 1 minute
 Temperature Rating:
 Operating temperature: -20°C to +105°C
 Environmental:
 Lead free, RoHS compliant



PACKAGED ON TAPE & REEL

Position: 20 thru 100
 $A = .020 [0.50] \times (\text{No. of Contacts}/2 - 1)$
 $B = .020 [0.50] \times (\text{No. of Contacts}/2 - 1) + .071 [1.80]$
 $C = .020 [0.50] \times (\text{No. of Contacts}/2 - 1) + .039 [1.00]$
 $D = .020 [0.50] \times (\text{No. of Contacts}/2 - 1) + .110 [2.80]$

UNLESS OTHERWISE SPECIFIED ALL DIMENSIONS ARE INCHES [MM] TOLERANCES: EXCEPT AS NOTED			
INCHES		HOLES	
.X ± .10	∅X ± .10		
.XX ± .020	∅XX ± .015		
.XXX ± .015	∅XXX ± .010		

APPROVALS		DATE
DRAWN	HR	10/20/15
CHECKED	CT	10/20/15
APPROVED		

ADAM TECH

909 Rahway Avenue, Union, NJ 07083
 Phone: 908-687-5000 Fax: 908-687-5710

TITLE .020 [0.50] PITCH BOARD TO BOARD PLUG CONNECTOR, SMT TYPE, W/ MYLAR		
SIZE X	PART NO. BB5-PL-XXX-G-X.XX-KT-T/R	REV. -
REF: S00070T	SCALE: NTS	SHEET 1 OF 1

6

5

4

3

2

1