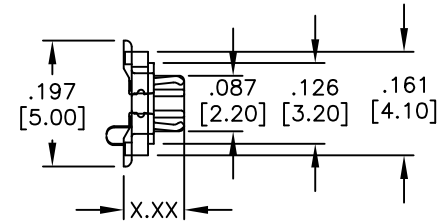
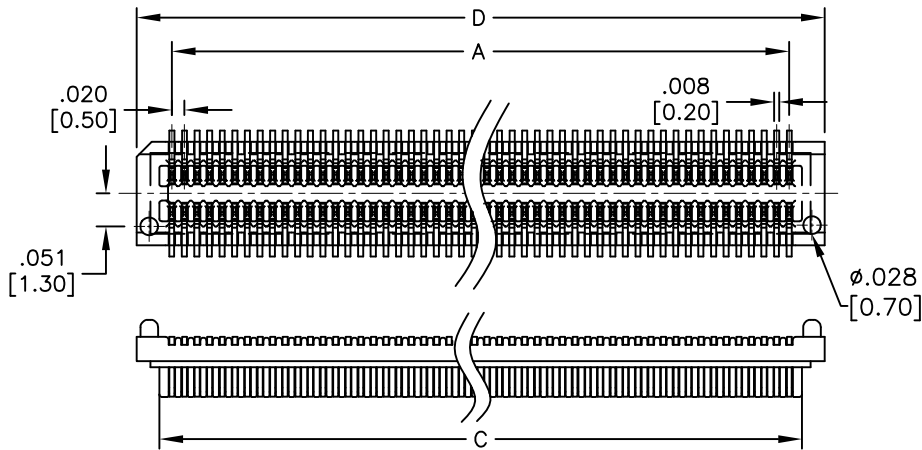


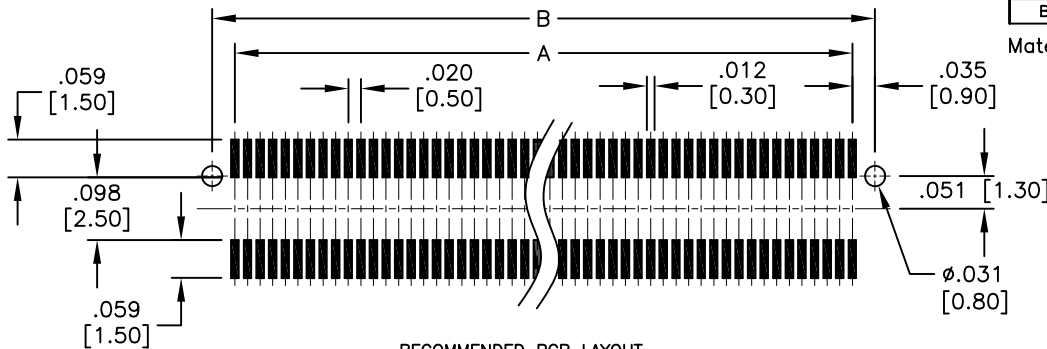
APPROVED: _____
 DATE: _____ TITLE: _____

Rev	AWO #	Description	Date	Appr
-		RELEASED	11/29/10	
A		ADDED MATING DIM.	4/17/15	AY/LW
B		UPDATED DIM.	10/20/15	HR/CT



ADAM P/N	DIM. (X.XX)	SOCKET DIM.(X.XX)	Mating Height
BB5-PL-XXX-G-2.40-T/R	.094 [2.40]	.108 [2.74]	.138 [3.50]
BB5-PL-XXX-G-2.40-T/R	.094 [2.40]	.146 [3.70]	.177 [4.50]
BB5-PL-XXX-G-2.74-T/R	.108 [2.74]	.108 [2.74]	.157 [4.00]
BB5-PL-XXX-G-2.74-T/R	.108 [2.74]	.146 [3.70]	.197 [5.00]

Mated with: BB5-SL-XXX-G-X.XX-T/R



RECOMMENDED PCB LAYOUT

SPECIFICATIONS:

Material:
 Insulator: Hi-Temp thermoplastic, rated UL 94V-0
 Insulator color: Black
 Contacts: Copper Alloy
 Plating:
 Gold flash over Nickel underplate overall
 Electrical:
 Operating voltage: 50 VAC max.
 Current rating: 0.5 Amps max.
 Contact resistance: 40 mohms max. initial
 Insulation resistance: 100 Mohms min@ 100V DC
 Dielectric withstanding voltage: 500 VAC for 1 minute
 Temperature Rating:
 Operating temperature: -20°C to +105°C
 Environmental:
 Lead free, RoHS compliant



PACKAGED ON TAPE & REEL

Position: 20 thru 100
 A = .020 [0.50] x (No. of Contacts/2 - 1)
 B = .020 [0.50] x (No. of Contacts/2 - 1) + .071 [1.80]
 C = .020 [0.50] x (No. of Contacts/2 - 1) + .039 [1.00]
 D = .020 [0.50] x (No. of Contacts/2 - 1) + .110 [2.80]

UNLESS OTHERWISE SPECIFIED ALL DIMENSIONS ARE INCHES [MM] TOLERANCES: EXCEPT AS NOTED		ADAM TECH 909 Rahway Avenue, Union, NJ 07083 Phone: 908-687-5000 Fax: 908-687-5710		
INCHES HOLES				
.X ± .10	Ø.X ± .10	TITLE .020 [0.50] PITCH BOARD TO BOARD PLUG CONNECTOR, SMT TYPE		
.XX ± .020	Ø.XX ± .015			
.XXX ± .015	Ø.XXX ± .010	REV. B		
APPROVALS		DATE	REF: S00070T SCALE: NTS SHEET 1 OF 1	
DRAWN	AY	11/29/10	SIZE X PART NO. BB5-PL-XXX-G-X.XX-T/R	
CHECKED	JL	11/29/10		
APPROVED				