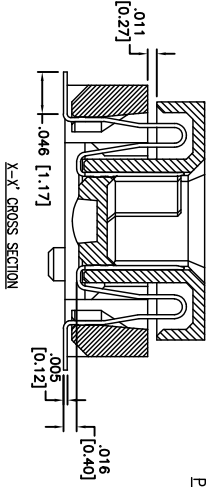
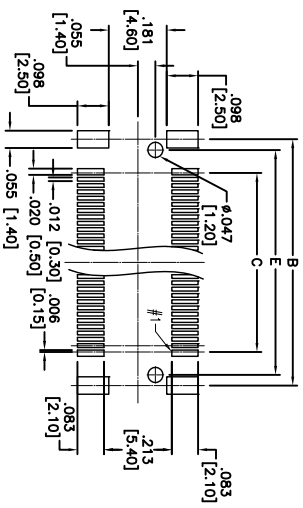
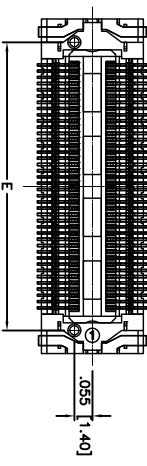
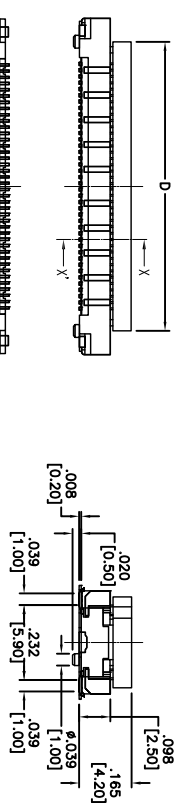
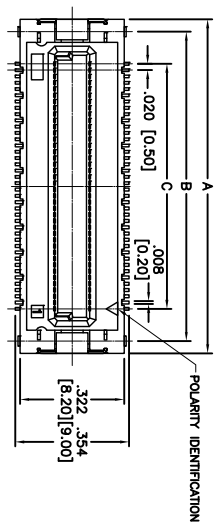


| | | | | |
|-----|-------|-------------|----------|------|
| Rev | AWO # | Description | Date | Appr |
| - | 11843 | RELEASED | 12/12/11 | |

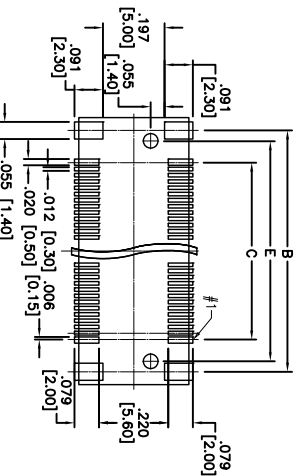
6 5 4 3 2 1

APPROVED: _____

DATE: _____ TITLE: _____



| ADAM P/N | A | B | C | D | E |
|-----------------------|---------------|---------------|---------------|---------------|---------------|
| BB5-SM-030-G-4.20-T/R | .559 [14.20] | .480 [12.20] | .276 [7.00] | .413 [10.50] | .413 [10.50] |
| BB5-SM-040-G-4.20-T/R | .657 [16.70] | .579 [14.70] | .374 [9.50] | .512 [13.00] | .512 [13.00] |
| BB5-SM-050-G-4.20-T/R | .756 [19.20] | .677 [17.20] | .472 [12.00] | .610 [15.50] | .610 [15.50] |
| BB5-SM-060-G-4.20-T/R | .854 [21.70] | .776 [19.70] | .571 [14.50] | .709 [18.00] | .709 [18.00] |
| BB5-SM-080-G-4.20-T/R | 1.051 [26.70] | .972 [24.70] | .768 [19.50] | .906 [23.00] | .906 [23.00] |
| BB5-SM-090-G-4.20-T/R | 1.150 [29.20] | 1.071 [27.20] | .866 [22.00] | 1.004 [25.50] | 1.004 [25.50] |
| BB5-SM-100-G-4.20-T/R | 1.248 [31.70] | 1.169 [29.70] | .965 [24.50] | 1.102 [28.00] | 1.102 [28.00] |
| BB5-SM-120-G-4.20-T/R | 1.445 [36.70] | 1.366 [34.70] | 1.161 [29.50] | 1.299 [33.00] | 1.299 [33.00] |
| BB5-SM-140-G-4.20-T/R | 1.642 [41.70] | 1.563 [39.70] | 1.358 [34.50] | 1.496 [38.00] | 1.496 [38.00] |



PACKAGED ON TAPE & REEL

PRINTED CIRCUIT BOARD LAYOUT (COMPONENT SIDE VIEW)
PLUG FOR 60, 80, 100, 120, 140 CONTACT

ADAM TECH

909 Railway Avenue, Union, NJ 07083
Phone: 908-687-5000 Fax: 908-687-5710

.020 [0.50] BOARD TO BOARD FEMALE SURFACE MOUNT

SPECIFICATIONS:
Material: Insulator: LCP, glass filled, rated UL 94V-0
Insulator color: Black
Contacts: Copper alloy
Retention Clip: Copper alloy, gold plated
Plating: Gold over Nickel underplate overall
Electrical: Current rating: 0.4 Amps.
Contact resistance: 80 mohms max.
Insulation resistance: 100 Mohms min. @ DC 250V
Dielectric withstanding voltage: 250 VAC for 1 minute
Temperature Rating: Operating temperature: -40°C to +85°C
Environmental: Lead free, RoHS compliant
Recommended soldering temp: 260°C for 5 seconds



| | |
|--|-------------|
| UNLESS OTHERWISE SPECIFIED ALL DIMENSIONS ARE IN MM | |
| TOLERANCES: EXCEPT AS NOTED | |
| INCHES | HOLDS |
| .X ± .10 | ØX ± .10 |
| .XX ± .020 | ØXX ± .015 |
| .XXX ± .015 | ØXXX ± .010 |
| APPROVALS | |
| DRAWN | AY |
| CHECKED | NP |
| DATE | DATE |
| 12/12/11 | 12/12/11 |

| | | | |
|---|------------|-----------------------|------|
| TITLE | SIZE | PART NO. | REV. |
| .020 [0.50] BOARD TO BOARD FEMALE SURFACE MOUNT | X | BB5-SM-XXX-G-4.20-T/R | |
| REF: S00206T | SCALE: NTS | SHEET 1 OF 1 | |

6 5 4 3 2 1