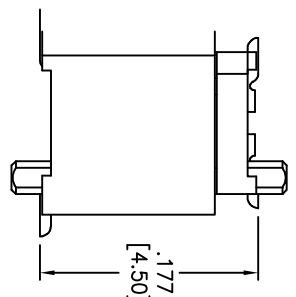
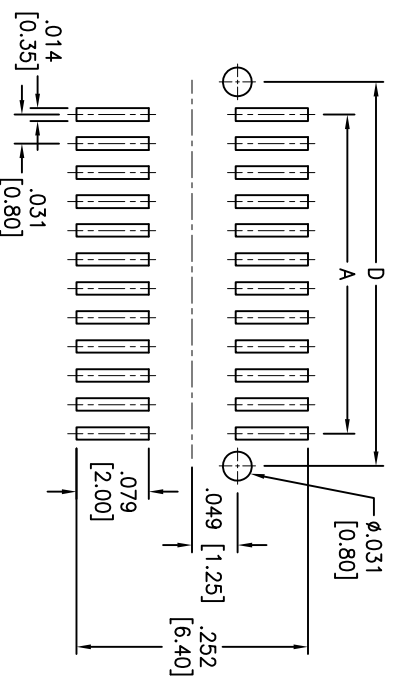
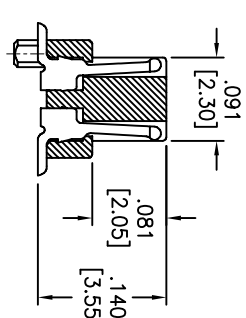
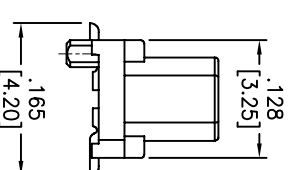
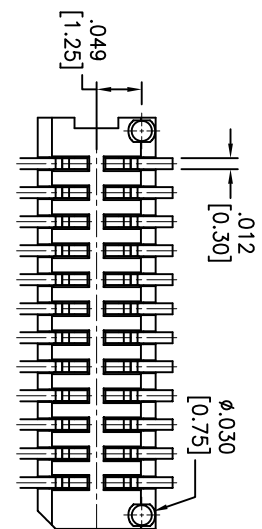
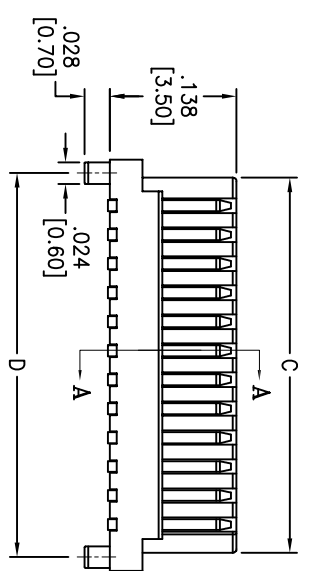
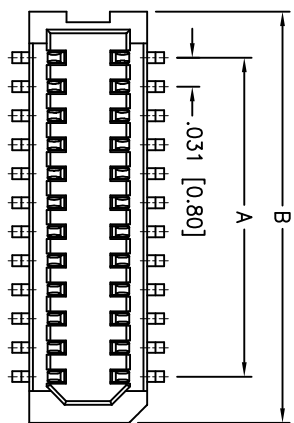


| Rev | AWO # | Description | Date | Appr |
|-----|-------|-------------|---------|------|
| - | | RELEASED | 9/19/12 | |

APPROVED: _____ TITLE: _____
 DATE: _____



SPECIFICATIONS:

Material:
 Insulator: Hi-temp thermoplastic, rated UL 94V-0
 Insulator color: White
 Contacts: Phosphor Bronze
 Plating:
 Gold flash over Nickel underplate overall
Electrical:
 Voltage rating: 50 V AC/DC max.
 Current rating: 0.5 A AC/DC max.
 Contact resistance: 40 mohms max. initial
 Insulation resistance: 500 Mohms min.
 Dielectric withstanding voltage: 250 VAC for 1 minute
Temperature Rating:
 Operating temperature: -25°C to +85°C
Environmental:
 Lead free, RoHS compliant

PACKAGED ON TAPE & REEL

Positions: 10 Thru 100
 A = .031 [0.80] x Spaces per row
 B = .031 [0.80] x Spaces per row + .100 [2.55]
 C = .031 [0.80] x Spaces per row + .061 [1.55]
 D = .031 [0.80] x Spaces per row + .071 [1.80]

MATING HEIGHT 4.50MM

UNLESS OTHERWISE SPECIFIED
 ALL DIMENSIONS ARE INCHES [MM]
 TOLERANCES: EXCEPT AS NOTED
 INCHES HOLES ±.10
 .XX ±.020 ØXX ±.015
 .XXX ±.015 ØXXX ±.010

ADAM TECH
 909 Railway Avenue, Union, NJ 07083
 Phone: 908-687-5000 Fax: 908-687-5710
 TITLE: .031 [0.80] BOARD TO BOARD PLUG
 3.55MM HEIGHT, SMT TYPE

| APPROVALS | DATE | SIZE | PART NO. | REV. |
|------------|---------|--------------|----------------------|--------------|
| DRAWN AY | 9/19/12 | X | BB8-PD-XXX-G-355-T/R | - |
| CHECKED GH | 9/19/12 | X | | |
| APPROVED | | REF: S00167T | SCALE: NIS | SHEET 1 OF 1 |

