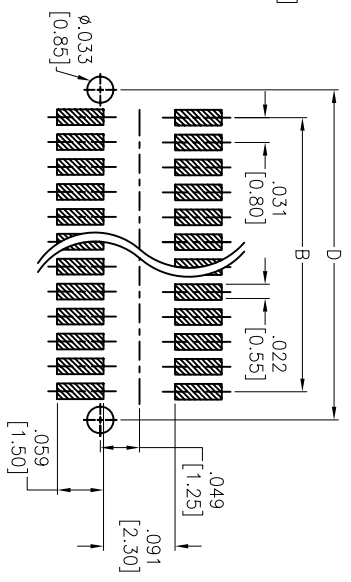
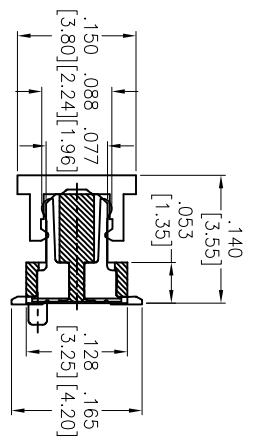
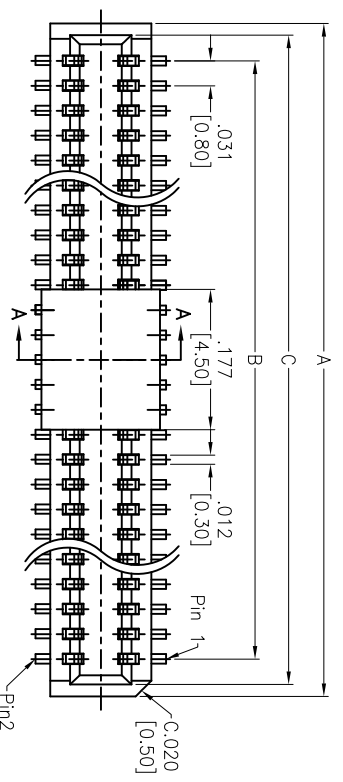
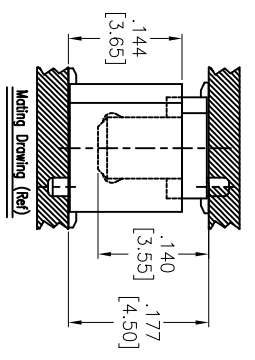
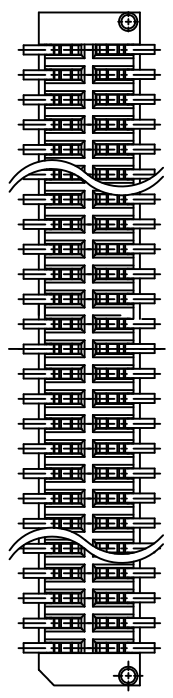
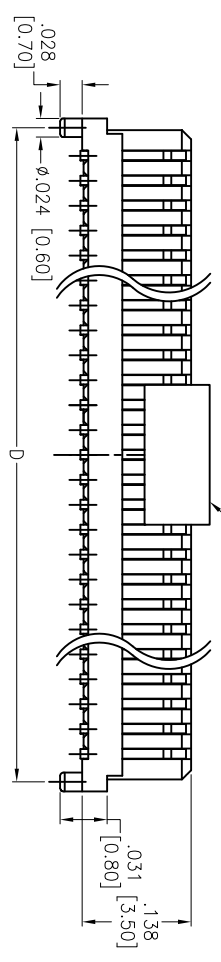


APPROVED: _____
 DATE: _____ TITLE: _____

Rev	AWO #	Description	Date	Appr
-		RELEASED	01/13/12	
A		REVISED DIM.	2/13/12	



RECOMMENDED PCB LAYOUT



PACKAGED ON TAPE & REEL

Positions: 10 Thru 100

- A = .031 [0.80] x Spaces per row + .094 [2.40]
- B = .031 [0.80] x Spaces per row
- C = .031 [0.80] x Spaces per row + .065 [1.65]
- D = .031 [0.80] x Spaces per row + .071 [1.80]

ADAM TECH

909 Railway Avenue, Union, NJ 07083
 Phone: 908-687-5000 Fax: 908-687-5770

TITLE
 .031 [0.80] BOARD TO BOARD PLUG
 3.55MM HEIGHT, SMT TYPE, WITH CAP

SPECIFICATIONS:
 Material: Nylon46, rated UL 94V-0
 Insulator color: White
 Contacts: Phosphor Bronze
 Plating: Gold flash over Nickel underplate overall
 Electrical:
 Operating voltage: 100 VAC max.
 Current rating: 0.5 Amps max.
 Contact resistance: 40 mohms max. initial
 Insulation resistance: 100 Mohms min.
 Dielectric withstanding voltage: 500 VAC for 1 minute
 Temperature Rating:
 Operating temperature: -40°C to +105°C
 Environmental:
 Lead free, RoHS compliant
 Recommended soldering temp: 260°C for 5 seconds



UNLESS OTHERWISE SPECIFIED ALL DIMENSIONS ARE INCHES [MM] TOLERANCES: EXCEPT AS NOTED		DRAWN		TITLE	
.X	± .10	ØX	± .10	909 Railway Avenue, Union, NJ 07083 Phone: 908-687-5000 Fax: 908-687-5770 .031 [0.80] BOARD TO BOARD PLUG 3.55MM HEIGHT, SMT TYPE, WITH CAP	
.XX	± .020	ØXX	± .015		
.XXX	± .015	ØXXX	± .010		
APPROVALS		DATE		REV.	
CHECKED	AY	01/13/12		SIZE	PART NO.
APPROVED				X	BB8-PN-XXX-G-355-PP-T/R
SCALE: NTS		SHEET 1 OF 1		REV. A	