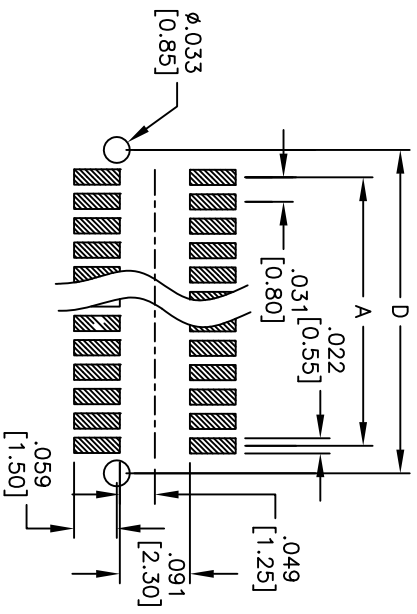
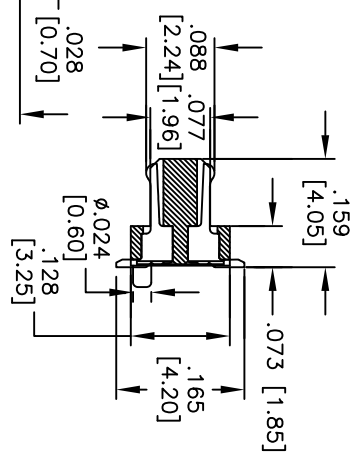
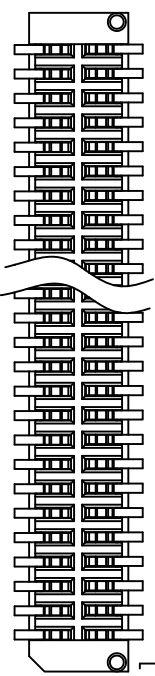
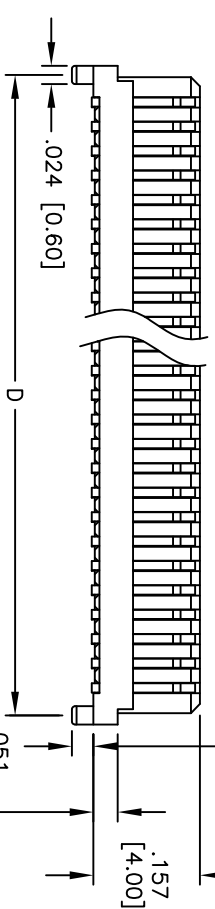
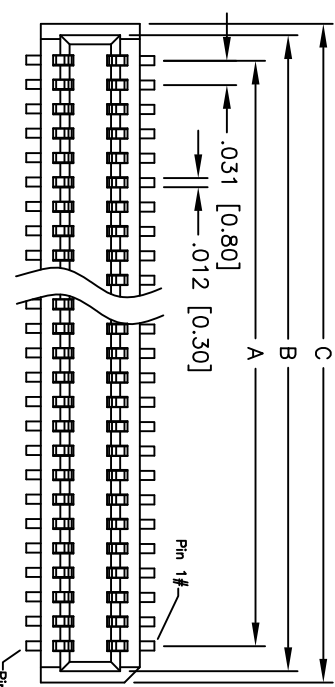


Rev	AWO #	Description	Date	Appr
-		RELEASED	5/22/09	

APPROVED: _____

DATE: _____ TITLE: _____



RECOMMENDED PCB LAYOUT

ADAM P/N	Socket Height (A1)	Mating Height (H)
BB8-PN-XX-G-4.05	.163 [4.15]	.217 [5.50]
BB8-PN-XX-G-4.05	.222 [5.65]	.276 [7.00]
BB8-PN-XX-G-4.05	.185 [4.70]	.242 [6.15]

Mated with: BB8-SN-XXX-G-X-XX

Positions: 10, 12, 14, 16, 18, 20, 22, 24, 26, 28, 30, 32, 34, 36, 38, 40, 50, 60, 68, 70, 80, 90, 100

A = .031 [0.80] x (No. of Positions per row - 1) + .065 [1.65]

B = .031 [0.80] x (No. of Positions per row - 1) + .094 [2.40]

C = .031 [0.80] x (No. of Positions per row - 1) + .071 [1.80]

D = .031 [0.80] x (No. of Positions per row - 1) + .071 [1.80]

SPECIFICATIONS:

Material: Nylon 46, rated UL 94V-0

Insulator color: White

Contacts: Phosphor Bronze

Plating:

Gold flash over Nickel underplate overall

Electrical:

Operating voltage: 100 VAC max.

Current rating: 0.5 Amps max.

Contact resistance: 40 mohms max. initial

Insulation resistance: 100 Mohms min.

Dielectric withstanding voltage: 500 VAC for 1 minute

Temperature Rating:

Operating temperature: -40°C to +105°C

Environmental:

Lead free, RoHS compliant

Recommended soldering temp: 260°C for 5 seconds



ADAM TECH

909 Railway Avenue, Union, NJ 07083
 Phone: 908-687-5000 Fax: 908-687-5710

TITLE: .031 [0.80] BOARD TO BOARD PLUG
 4.05MM HEIGHT, SMT TYPE

UNLESS OTHERWISE SPECIFIED ALL DIMENSIONS ARE INCHES [MM]		TOLERANCES EXCEPT AS NOTED	
INCHES		HOLDS	
.X ± .10	ØXX ± .10		
.XX ± .020	ØXXX ± .015		
.XXX ± .015	ØXXXX ± .010		
APPROVALS		DATE	
DRAWN	DY	7/20/10	
CHECKED			
APPROVED			
SIZE	PART NO.	REV.	
X	BB8-PN-XXX-G-4.05		
REF: S00056T	SCALE: NTS	SHEET 1 OF 1	