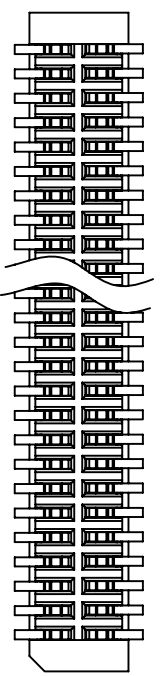
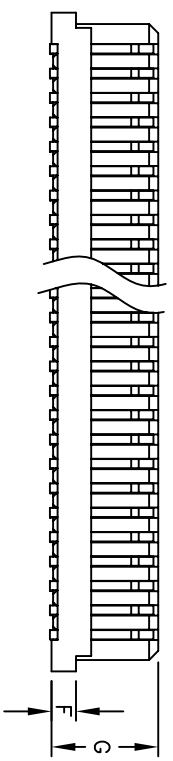
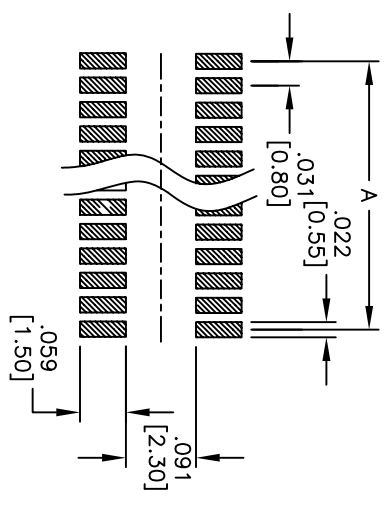
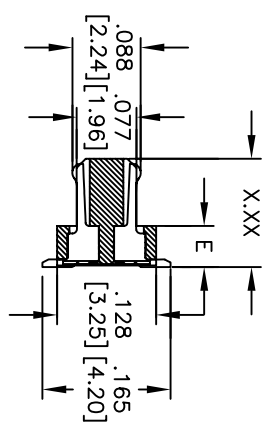
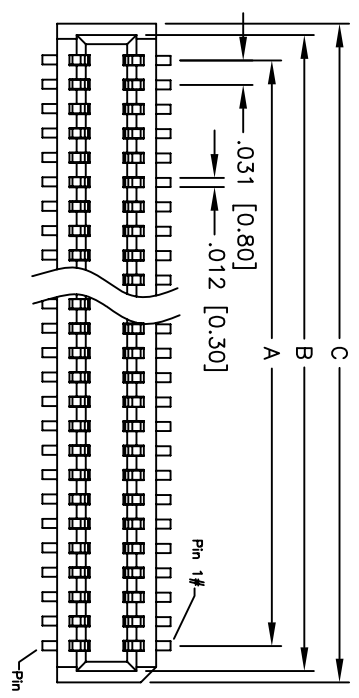


APPROVED: _____
 DATE: _____ TITLE: _____

Rev	AWO #	Description	Date	Appr
-		RELEASED	5/24/12	
A		REVISED SHAPE	7/25/14	AY



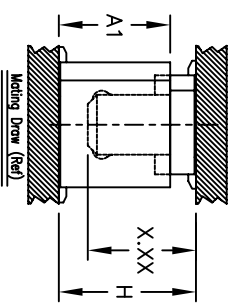
PACKAGED ON TAPE & REEL

ADAM P/N	X.XX	E	F	G	Socket Height (A1)	Mating Height (H)
BB8-PN-XXX-G-3.55-NP-T/R	.140 [3.55]	.053 [1.35]	.031 [0.80]	.138 [3.50]	.144 [3.65]	.177 [4.50]
BB8-PN-XXX-G-4.05-NP-T/R	.159 [4.05]	.073 [1.85]	.051 [1.30]	.157 [4.00]	.163 [4.15]	.197 [5.00]
					.203 [5.15]	.236 [6.00]
					.222 [5.65]	.256 [6.50]
					.185 [4.70]	.222 [5.65]
					.163 [4.15]	.217 [5.50]
					.222 [5.65]	.276 [7.00]
					.185 [4.70]	.242 [6.15]

Mated with: BB8-SN-XXX-G-XXX-NP-T/R

SPECIFICATIONS:

Material: Insulator: Hi-temp thermoplastic, rated UL 94V-0
 Insulator color: White
 Contacts: Phosphor Bronze
 Plating: Gold flash over Nickel underplate overall
 Electrical: Operating voltage: 100 VAC max.
 Current rating: 0.5 Amps max.
 Contact resistance: 40 mohms max. initial
 Insulation resistance: 100 Mohms min.
 Dielectric withstanding voltage: 500 VAC for 1 minute
 Temperature Rating: Operating temperature: -40°C to +105°C
 Environmental: Lead free, RoHS compliant



Positions: 10, 12, 14, 16, 18, 20, 22, 24, 26, 28, 30, 32, 34, 36, 38, 40, 50, 60, 68, 70, 80, 90, 100
 A = .031 [0.80] x (No. of Positions per row - 1)
 B = .031 [0.80] x (No. of Positions per row - 1) + .065 [1.65]
 C = .031 [0.80] x (No. of Positions per row - 1) + .094 [2.40]

ADAM TECH
 909 Railway Avenue, Union, NJ 07083
 Phone: 908-687-5000 Fax: 908-687-5710

TITLE: .031 [0.80] BOARD TO BOARD
 PLUG, SMT TYPE, NO PEG

UNLESS OTHERWISE SPECIFIED ALL DIMENSIONS ARE INCHES [MM]		TOLERANCES: EXCEPT AS NOTED INCHES		HOLE SIZES		DATE	
.X	± .10	ØXX	± .10	ØXX	± .015	DATE	
.XX	± .020	ØXXX	± .015	ØXXX	± .010		
.XXX	± .015	ØXXXX	± .010				
APPROVALS							
DRAWN	AY	DATE	5/24/12	SIZE	PART NO.	REV.	
CHECKED	NP	DATE	5/24/12	SCALE	BB8-PN-XXX-G-X.XX-NP-T/R	A	
APPROVED		DATE		SCALE	S00056T		

