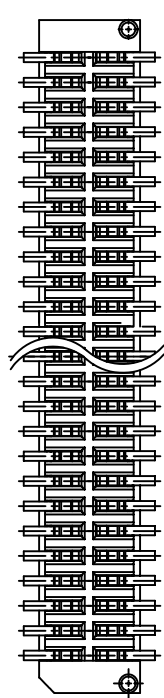
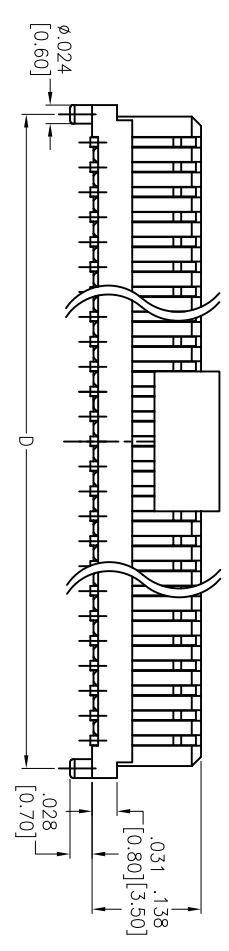
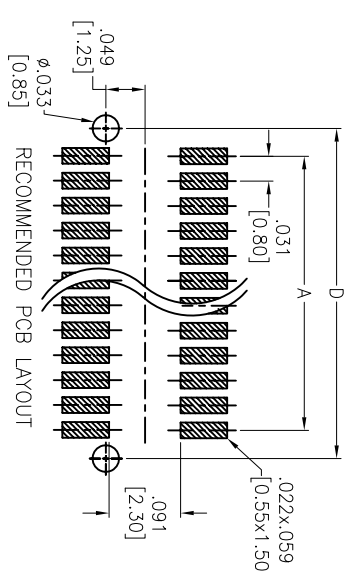
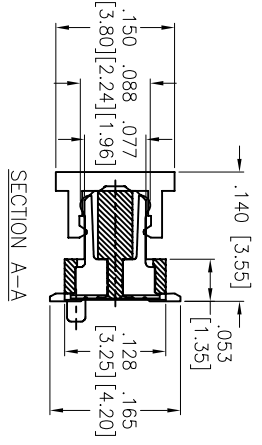
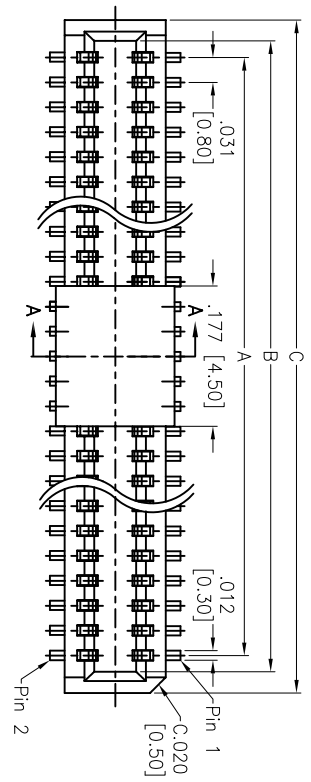


Rev	AWO #	Description	Date	Appr
-		RELEASED	11/05/12	

APPROVED: _____
 DATE: _____ TITLE: _____



Mated with: BB8-SN-XXX-G-X.XX-T/R

ADAM P/N	XXX	E	F	G	Socket Height (A1)	Mating Height (H)
BB8-PN-XXX-G-3.55-PP-T/R	.140	.053	.031	.138	.144 [3.65]	.177 [4.50]
	.163 [4.15]	.197 [5.00]	.203 [5.15]	.236 [6.00]		
	.222 [5.65]	.256 [6.50]	.185 [4.70]	.222 [5.65]		
	.163 [4.15]	.217 [5.50]	.157 [4.00]	.157 [4.00]		
	.222 [5.65]	.276 [7.00]	.185 [4.70]	.185 [4.70]		
BB8-PN-XXX-G-4.05-PP-T/R	.159	.073	.051	.157	.185 [4.70]	.242 [6.15]
	.197 [5.00]	.222 [5.65]	.157 [4.00]	.157 [4.00]		

PACKAGED ON TAPE & REEL

Positions: 10, 12, 14, 16, 18, 20, 22, 24, 26, 28, 30, 32, 34, 36, 38, 40, 50, 60, 68, 70, 80, 90, 100

- A = .031 [0.80] x (No. of Positions per row - 1)
- B = .031 [0.80] x (No. of Positions per row - 1) + .065 [1.65]
- C = .031 [0.80] x (No. of Positions per row - 1) + .094 [2.40]
- D = .031 [0.80] x (No. of Positions per row - 1) + .071 [1.80]

ADAM TECH

909 Railway Avenue, Union, NJ 07083
 Phone: 908-687-5000 Fax: 908-687-5710

.031 [0.80] BOARD TO BOARD, PLUG SURFACE MOUNT TYPE, WITH CAP

SPECIFICATIONS:
 Material: Insulator: Hi-temp thermoplastic, rated UL 94V-0
 Insulator color: White
 Contacts: Phosphor Bronze
 Plating: Gold flash over Nickel underplate overall
 Electrical: Operating voltage: 100 VAC max.
 Current rating: 0.5 Amps max.
 Contact resistance: 40 mohms max. initial
 Insulation resistance: 100 Mohms min.
 Dielectric withstanding voltage: 500 VAC for 1 minute
 Temperature Rating: Operating temperature: -40°C to +105°C
 Environmental: Lead free, RoHS compliant



UNLESS OTHERWISE SPECIFIED ALL DIMENSIONS ARE INCHES [MM]		TOLERANCES: EXCEPT AS NOTED	
INCHES		HOLDS	
.X	± .10	ØXX	± .10
.XX	± .020	ØXXX	± .015
.XXX	± .015	ØXXXX	± .010
APPROVALS		DATE	
DRAWN	TW	11/05/12	
CHECKED	AY	11/05/12	
APPROVED		SIZE	PART NO.
		X	BB8-PN-XXX-G-X.XX-PP-T/R
		REF:	S0005T
		SCALE:	NIS
		SHEET	1 OF 1