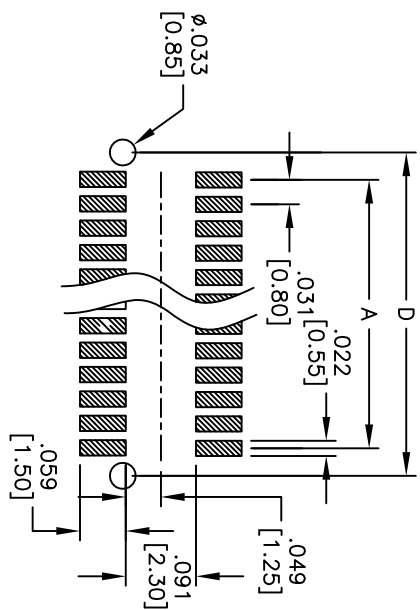
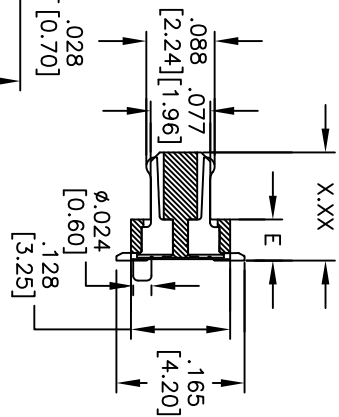
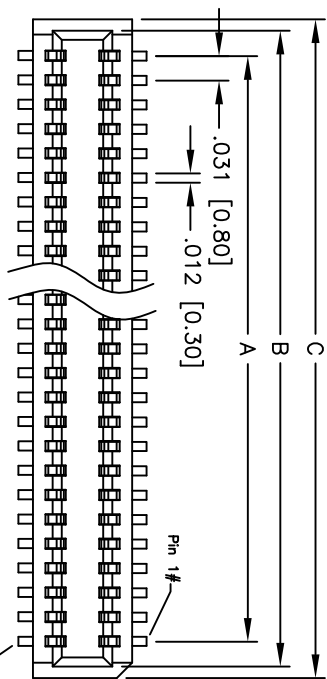
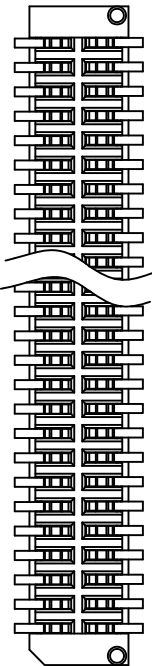
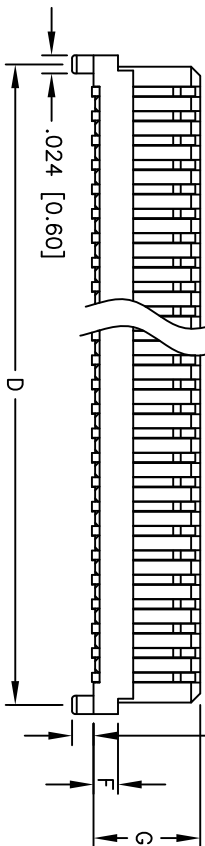


APPROVED: _____
 DATE: _____ TITLE: _____

| Rev | AWO # | Description | Date | Appr |
|-----|-------|--------------|----------|------|
| - | | RELEASED | 11/29/10 | |
| A | | REVISED DIM. | 5/24/12 | |



RECOMMENDED PCB LAYOUT



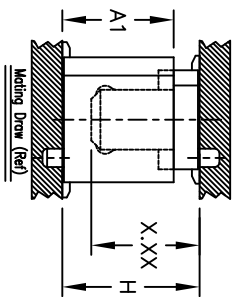
PACKAGED ON TAPE & REEL

| ADAM P/N | X.XX | E | F | G | Socket Height (A1) | Mating Height (H) |
|-----------------------|-------------|-------------|-------------|-------------|--------------------|-------------------|
| BB8-PN-XXX-G-3.55-T/R | .140 [3.55] | .053 [1.35] | .031 [0.80] | .138 [3.50] | .144 [3.65] | .177 [4.50] |
| BB8-PN-XXX-G-4.05-T/R | .159 [4.05] | .073 [1.85] | .051 [1.30] | .157 [4.00] | .163 [4.15] | .197 [5.00] |
| | | | | | .203 [5.15] | .236 [6.00] |
| | | | | | .222 [5.65] | .256 [6.50] |
| | | | | | .185 [4.70] | .222 [5.65] |
| | | | | | .163 [4.15] | .217 [5.50] |
| | | | | | .222 [5.65] | .276 [7.00] |
| | | | | | .185 [4.70] | .242 [6.15] |

Mated with: BB8-SN-XXX-G-XXX-T/R

SPECIFICATIONS:

- Material: Insulator: Hi-temp thermoplastic, rated UL 94V-0
- Insulator color: White
- Contacts: Phosphor Bronze
- Plating: Gold flash over Nickel underplate overall
- Electrical: Operating voltage: 100 VAC max.
- Current rating: 0.5 Amps max.
- Contact resistance: 40 mohms max. initial
- Insulation resistance: 100 Mohms min.
- Dielectric withstanding voltage: 500 VAC for 1 minute
- Temperature Rating: Operating temperature: -40°C to +105°C
- Environmental: Lead free, RoHS compliant



Positions: 10, 12, 14, 16, 18, 20, 22, 24, 26, 28, 30, 32, 34, 36, 38, 40, 50, 60, 68, 70, 80, 90, 100

A = .031 [0.80] x (No. of Positions per row - 1) + .065 [1.65]
 B = .031 [0.80] x (No. of Positions per row - 1) + .094 [2.40]
 C = .031 [0.80] x (No. of Positions per row - 1) + .071 [1.80]
 D = .031 [0.80] x (No. of Positions per row - 1) + .071 [1.80]

ADAM TECH

909 Railway Avenue, Union, NJ 07083
 Phone: 908-687-5000 Fax: 908-687-5710

.031 [0.80] BOARD TO BOARD
 PLUG, SMT TYPE

| UNLESS OTHERWISE SPECIFIED ALL DIMENSIONS ARE INCHES [MM] | | TOLERANCES EXCEPT AS NOTED | |
|--|-------------|----------------------------|--------|
| .X ± .10 | ØX ± .10 | HOLDS | ± .10 |
| .XX ± .020 | ØXX ± .015 | | ± .015 |
| .XXX ± .015 | ØXXX ± .010 | | ± .010 |
| APPROVALS | | DATE | |
| DRAWN AY | 11/29/10 | | |
| CHECKED JL | 11/29/10 | | |
| APPROVED | | | |
| REF: S0005T | SCALE: NTS | SHEET 1 OF 1 | |

