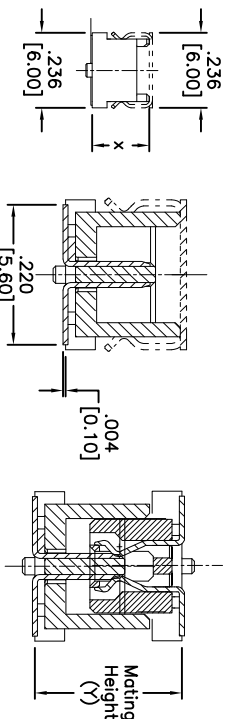
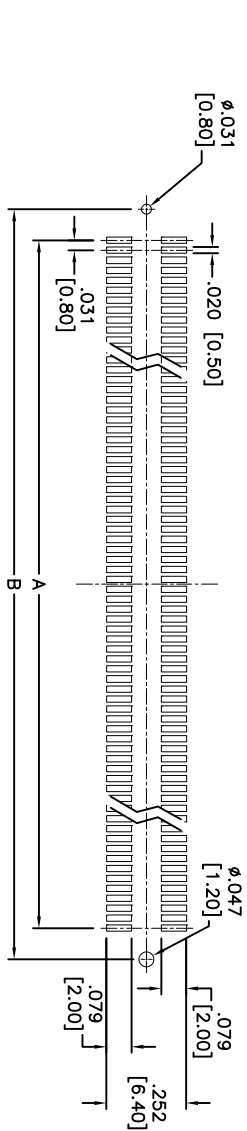
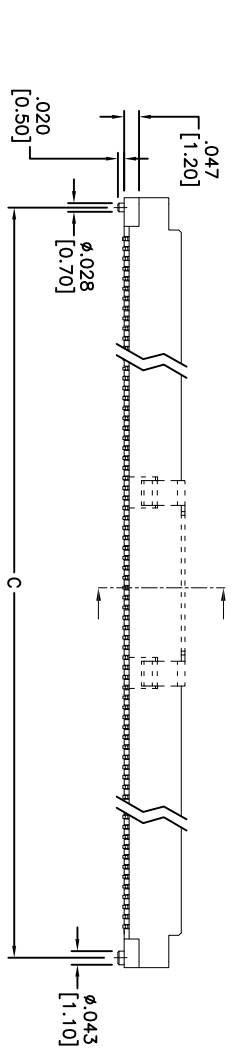
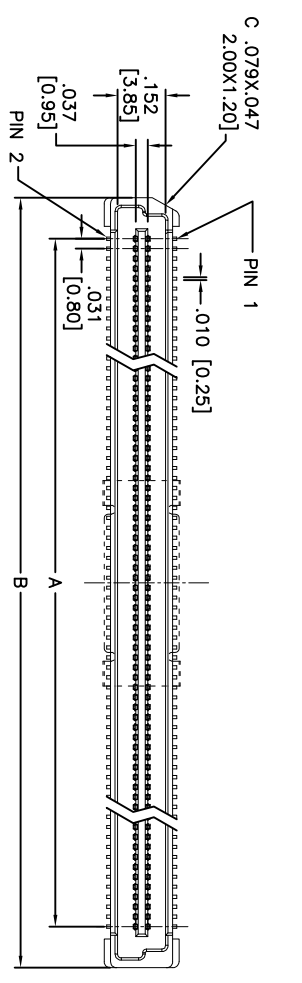


Rev	AWO #	Description	Date	Appr
-		RELEASED	3/28/13	

APPROVED: \_\_\_\_\_  
 DATE: \_\_\_\_\_ TITLE: \_\_\_\_\_



SECTION A-A

ADAM P/N	Socket Height (H)	DM. (X)	Mating Height (Y)
BB8-PO-XXX-SG-4.60-PP-T/R	.146 [3.70]	.181 [4.60]	.197 [5.00]
BB8-PO-XXX-SG-5.60-PP-T/R	.146 [3.70]	.220 [5.60]	.236 [6.00]
BB8-PO-XXX-SG-6.60-PP-T/R	.146 [3.70]	.260 [6.60]	.276 [7.00]
BB8-PO-XXX-SG-7.60-PP-T/R	.146 [3.70]	.299 [7.60]	.315 [8.00]
BB8-PO-XXX-SG-4.60-PP-T/R	.303 [7.70]	.181 [4.60]	.354 [9.00]
BB8-PO-XXX-SG-5.60-PP-T/R	.303 [7.70]	.220 [5.60]	.394 [10.00]
BB8-PO-XXX-SG-6.60-PP-T/R	.303 [7.70]	.260 [6.60]	.433 [11.00]
BB8-PO-XXX-SG-7.60-PP-T/R	.303 [7.70]	.299 [7.60]	.472 [12.00]
BB8-PO-XXX-SG-4.60-PP-T/R	.461 [11.70]	.181 [4.60]	.512 [13.00]
BB8-PO-XXX-SG-5.60-PP-T/R	.461 [11.70]	.220 [5.60]	.551 [14.00]
BB8-PO-XXX-SG-6.60-PP-T/R	.461 [11.70]	.260 [6.60]	.591 [15.00]
BB8-PO-XXX-SG-7.60-PP-T/R	.461 [11.70]	.299 [7.60]	.630 [16.00]

Mated with: BB8-SO-XXX-SG-X.XX-PP-T/R

A = .031 [0.80] x No. of Spaces  
 B = .031 [0.80] x (No. of Positions per row) + .228 [5.80]  
 C = .031 [0.80] x (No. of Positions per row) + .165 [4.20]

SPECIFICATIONS:

- Material: Insulator: Hi-temp thermoplastic, rated UL 94V-0
- Insulator color: White
- Contacts: Copper Alloy
- Plating: Gold over Nickel underplate on contact area, Tin over Copper underplate on PCB tails
- Electrical: Current rating: 0.5 Amps max. Contact resistance: 30 mohms max @DC 100mA Insulation resistance: 500 Mohms min. Dielectric withstanding voltage: 500 VAC for 1 minute
- Temperature Rating: Operating temperature: -45°C to +125°C
- Environmental: Lead free, RoHS compliant



**ADAM TECH**

909 Railway Avenue, Union, NJ 07083  
 Phone: 908-687-5000 Fax: 908-687-5710

TITLE: .031 [0.80] BOARD TO BOARD PLUG  
 SMT TYPE, SEL GOLD PLATED

UNLESS OTHERWISE SPECIFIED	INCHES	MILLIMETERS
TOLERANCES: EXCEPT AS NOTED		
.X ± .10	ØX ± .10	
.XX ± .020	ØXX ± .015	
.XXX ± .015	ØXXX ± .010	

APPROVALS	DATE	TITLE
DRAWN AY	3/28/13	
CHECKED GH	3/28/13	
APPROVED		

SIZE	PART NO.	REV.
X	BB8-PO-XXX-SG-X.XX-PP-T/R	

REF: S0008T SCALE: NTS SHEET 1 OF 1