

6

5

4

3

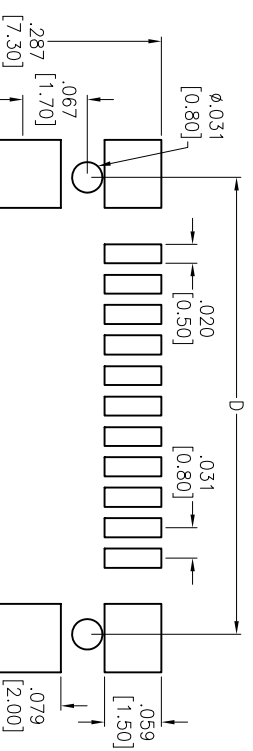
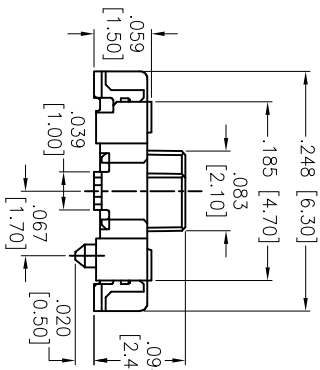
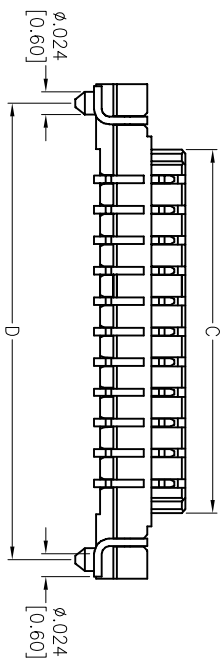
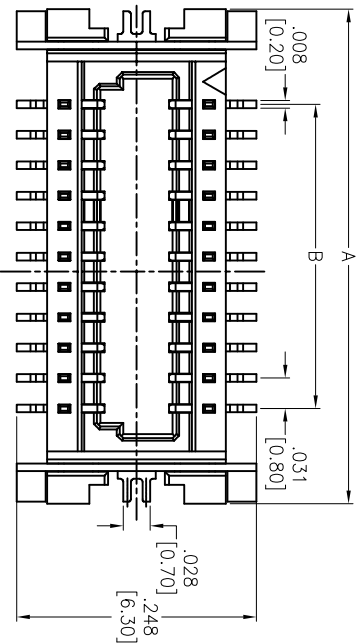
2

1

APPROVED: \_\_\_\_\_

DATE: \_\_\_\_\_ TITLE: \_\_\_\_\_

Rev	AWO #	Description	Date	Appr
-		RELEASED	1/3/14	
A		UPDATED SPECIFICATIONS	1/27/14	SS
B		REVISED SPEC.	7/8/14	AVYC



RECOMMENDED PCB LAYOUT

**SPECIFICATIONS:**

**Material:**  
 Insulator: Hi-Temp Thermoplastic, rated UL 94V-0  
 Insulator color: Natural  
 Contacts: Phosphor bronze  
 Plating:  
 Gold Flash over Nickel underplate overall.

**Electrical:**  
 Operating Voltage: 30V AC/DC Max.  
 Current rating: 0.5 Amps max  
 Contact resistance: 40 mohms max. initial  
 Insulation resistance: 100 Mohms min  
 Dielectric withstanding voltage: 500 VAC for 1 minute

**Mechanical:**  
 Durability: 30 Mating Cycles  
 Insertion Force: 150gf /contact  
 Retention Force: 200g Min /contact  
 Temperature Rating:  
 Operating temperature: 0°C to +70°C  
 Environmental:  
 Lead free, RoHS compliant

**PACKAGED ON TAPE & REEL**  
 Positions: 04 thru 100  
 A = B + .197 [5.00]  
 B = .031 [0.80] x No. of Spaces  
 C = B + .061 [1.55]  
 D = B + .157 [4.00]

UNLESS OTHERWISE SPECIFIED  
 ALL DIMENSIONS ARE INCHES [MM]  
 TOLERANCES: EXCEPT AS NOTED  
 INCHES HOLE SIZES  
 .X ± .10 ØXX ± .10  
 .XX ± .020 ØXXX ± .015  
 .XXX ± .015 ØXXXX ± .010

**ADAM TECH**  
 909 Rahway Avenue, Union, NJ 07083  
 Phone: 908-687-5000 Fax: 908-687-5710

APPROVALS	DATE	TITLE	SIZE	PART NO.	REV.
DRAWN AY	1/3/14	.031 [0.80] BOARD TO BOARD PLUG, SMT TYPE	X	BB8-pp-XX-G-2.40-TR	B
CHECKED KW	1/3/14	2.40MM HEIGHT, STACKING HEIGHT=3.0MM	X		
APPROVED					

6

5

4

3

2

1

6

5

4

3

2

1

6

5

4

3

2

1