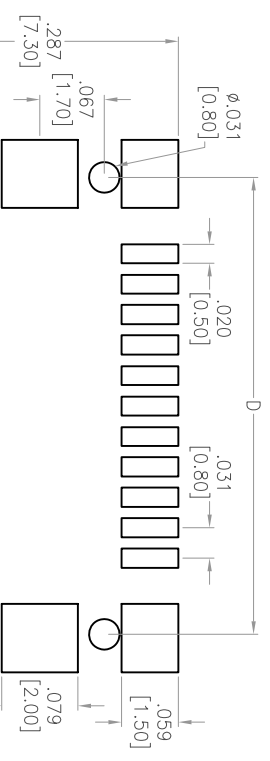
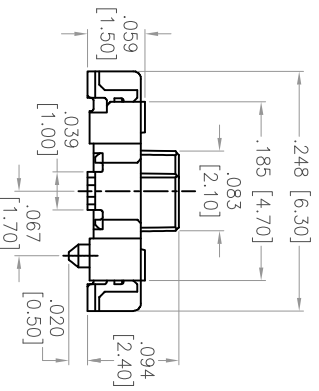
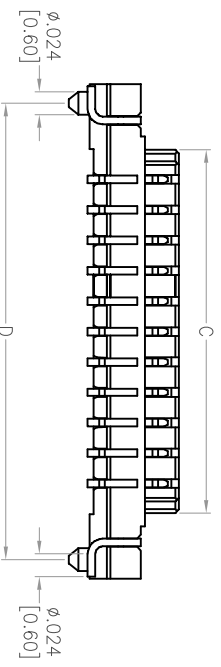
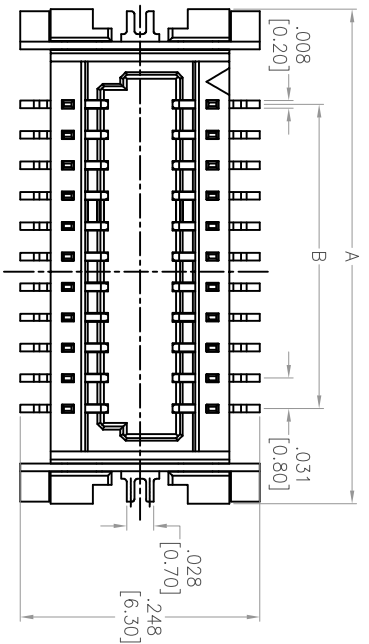


APPROVED: _____
 DATE: _____ TITLE: _____

Rev	AWO #	Description	Date	Appr
-		RELEASED	11/25/13	
A		UPDATED SPECIFICATIONS	1/27/14	SS



RECOMMENDED PCB LAYOUT

SPECIFICATIONS:

Material:
 Insulator: Hi-Temp Thermoplastic, rated UL 94V-0
 Insulator color: Natural
 Contacts: Copper Alloy
 Plating:
 Tin over Nickel underplate overall.
Electrical:
 Operating Voltage: 30V AC/DC Max.
 Current rating: 0.5 Amps max
 Contact resistance: 40 mohms max; initial
 Insulation resistance: 100 Mohms min
 Dielectric withstanding voltage: 500 VAC for 1 minute
Mechanical:
 Durability: 30 Mating Cycles
 Insertion Force: 150gf /contact
 Retention Force: 200g Min /contact
 Temperature Rating:
 Operating temperature: 0°C to +70°C
 Environmental:
 Lead free, RoHS compliant

PACKAGED ON TAPE & REEL
 Positions: 04 thru 100
 A = B + .197 [5.00]
 B = .031 [0.80] x No. of Spaces
 C = B + .061 [1.55]
 D = B + .157 [4.00]

UNLESS OTHERWISE SPECIFIED
 ALL DIMENSIONS ARE INCHES [MM]
 TOLERANCES: EXCEPT AS NOTED
 INCHES: .X ± .10 ØXX ± .10
 .XX ± .020 ØXXX ± .015
 .XXX ± .015 ØXXXX ± .010

ADAM TECH

909 Rahway Avenue, Union, NJ 07083
 Phone: 908-687-5000 Fax: 908-687-5710

TITLE: .031 [0.80] BOARD TO BOARD PLUG, SMT TYPE
 2.40MM HEIGHT, STACKING HEIGHT=3.0MM

APPROVALS	DATE	SIZE	PART NO.	REV.
DRAWN TW	11/25/13	X	BB8-PP-XX-T-2.40-T/R	A
CHECKED YC	11/25/13	X		
APPROVED				

REF: S0024TT SCALE: NTS SHEET 1 OF 1