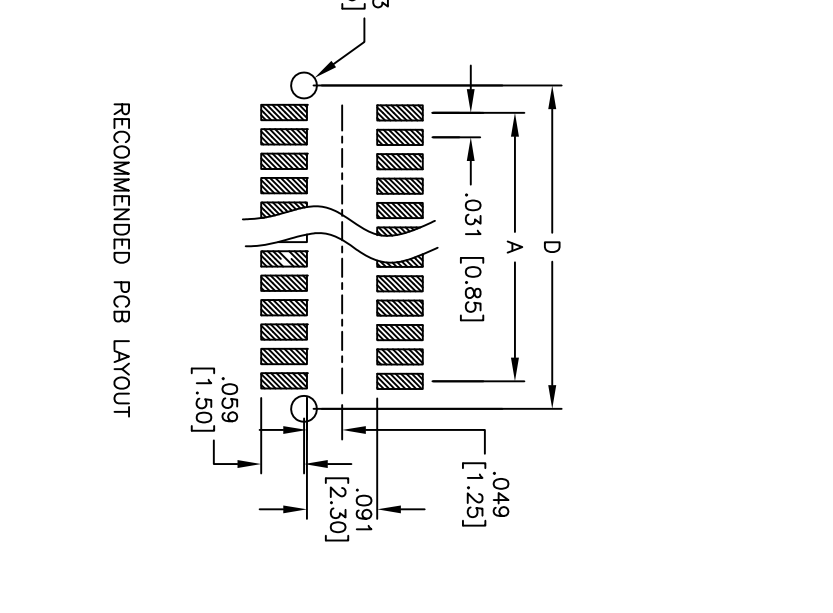
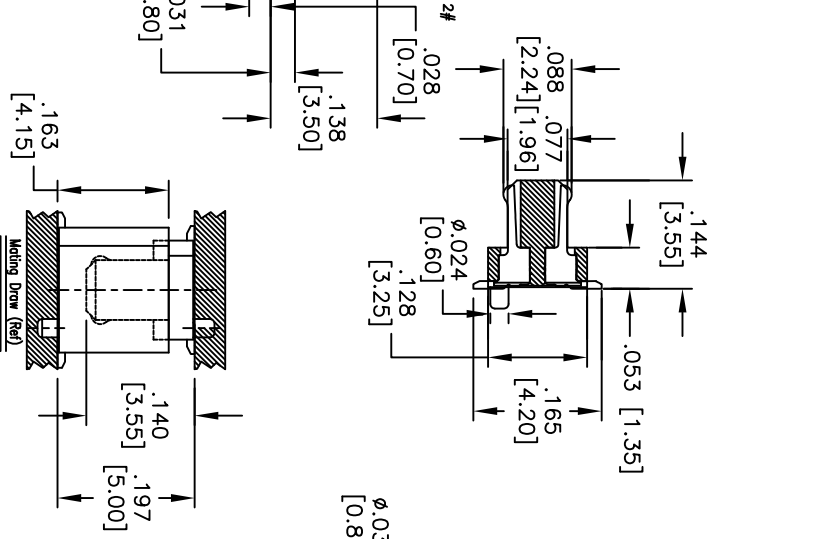
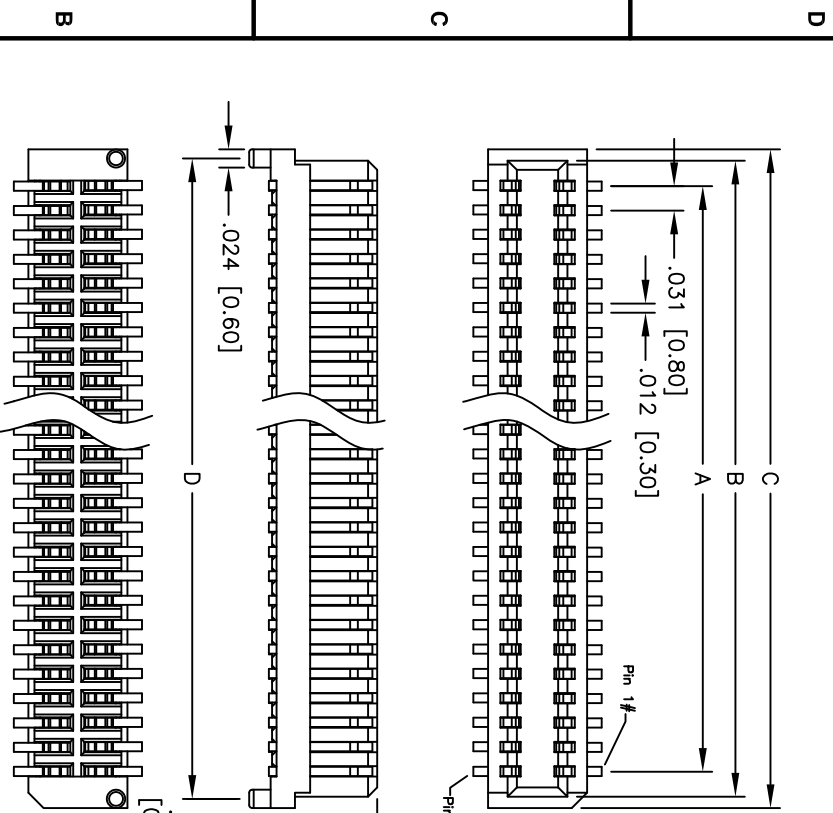


Rev	AWO #	Description	Date	Appr
-		RELEASED	5/22/09	

APPROVED: \_\_\_\_\_  
 DATE: \_\_\_\_\_ TITLE: \_\_\_\_\_



RECOMMENDED PCB LAYOUT

Positions: 10, 12, 14, 16, 18, 20, 22, 24, 26, 28, 30, 32, 34, 36, 38, 40, 50, 60, 68, 70, 80, 90, 100

A = .031 [0.80] x (No. of Contacts - 1) + .065 [1.65]  
 B = .031 [0.80] x (No. of Contacts - 1) + .094 [2.40]  
 C = .031 [0.80] x (No. of Contacts - 1) + .071 [1.80]  
 D = .031 [0.80] x (No. of Contacts - 1) + .071 [1.80]

**ADAM TECH**

909 Rahway Avenue, Union, NJ 07083  
 Phone: 908-687-5000 Fax: 908-687-5710

TITLE: .031 [0.80] BOARD TO BOARD SOCKET  
 3.55MM HEIGHT, SMT TYPE

**SPECIFICATIONS:**  
 Material: Nylon 46, rated UL 94V-0  
 Insulator color: White  
 Contacts: Phosphor Bronze  
 Plating: Gold flash over Nickel underplate overall  
 Electrical:  
 Operating voltage: 100 VAC max.  
 Current rating: 0.5 Amps max.  
 Contact resistance: 40 mohms max. initial  
 Insulation resistance: 100 Mohms min.  
 Dielectric withstanding voltage: 500 VAC for 1 minute  
 Temperature Rating:  
 Operating temperature: -40°C to +105°C  
 Environmental:  
 Lead free, RoHS compliant  
 Recommended soldering temp: 260°C for 5 seconds

UNLESS OTHERWISE SPECIFIED  
 ALL DIMENSIONS ARE IN INCHES [MM]  
 TOLERANCES: EXCEPT AS NOTED  
 INCHES HOLE SIZES  
 .X ± .10 ØX ± .10  
 .XX ± .020 ØXX ± .015  
 .XXX ± .015 ØXXX ± .010

APPROVALS	DATE
DRAWN	DY
CHECKED	
APPROVED	

SIZE	PART NO.	REV.
X	BB8-S1-XX-G	-

REF: S00036T SCALE: NTS SHEET 1 OF 1