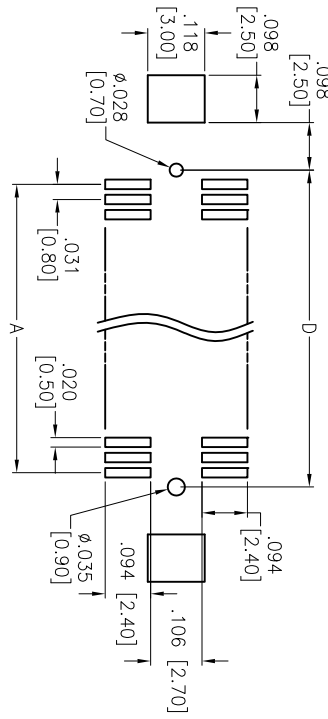
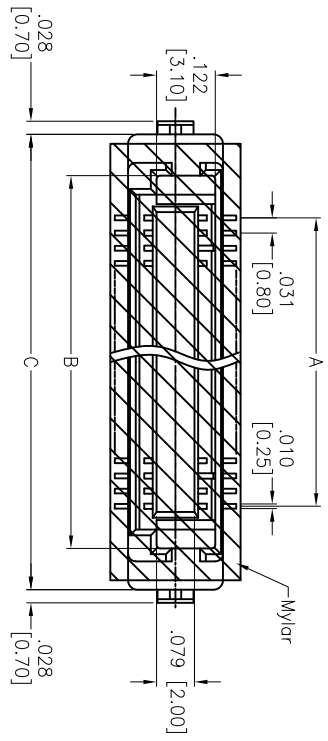
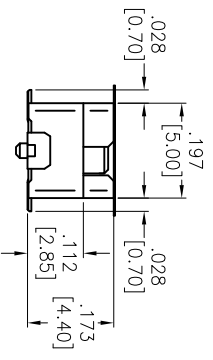
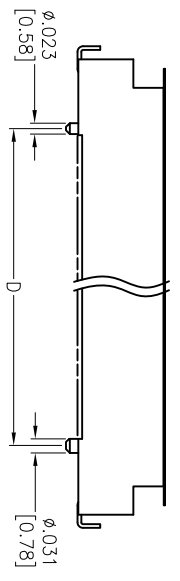


Rev	AWO #	Description	Date	Appr
-		RELEASED	10/27/11	

APPROVED: _____
 DATE: _____ TITLE: _____



RECOMMENDED PCB LAYOUT



PACKAGED ON TAPE & REEL

- Positions: 20, 30, 40, 50, 60
- A = .031 [0.80] x (No. of Contacts per row - 1) + .175 [4.45]
 - B = .031 [0.80] x (No. of Contacts per row - 1) + .346 [8.80]
 - C = .031 [0.80] x (No. of Contacts per row - 1) + .059 [1.50]
 - D = .031 [0.80] x (No. of Contacts per row - 1) + .059 [1.50]

ADAM TECH

909 Railway Avenue, Union, NJ 07083
 Phone: 908-687-5000 Fax: 908-687-5710

TITLE: .031 [0.80] BOARD TO BOARD SOCKET, SMT TYPE
 4.4 MM HEIGHT, STACKING HEIGHT=2.85MM

SIZE	PART NO.	REV.
X	BB8-SED-XX-G-4.40-10-KT-1/R	-
REF: S0028T	SCALE: NTS	SHEET 1 OF 1

UNLESS OTHERWISE SPECIFIED
 ALL DIMENSIONS ARE IN INCHES [MM]
 TOLERANCES: EXCEPT AS NOTED

INCHES	HOLES
.X ± .10	ØX ± .10
.XX ± .020	ØXX ± .015
.XXX ± .015	ØXXX ± .010

DRAWN	AY	10/27/11
CHECKED	CC	10/27/11
APPROVED		



SPECIFICATIONS:
 Material: Insulator: Hi-temp thermoplastic, rated UL 94V-0
 Insulator color: Black
 Contacts: Copper Alloy
 Hold down: Copper Alloy
 Plating: 10u" Gold flash over Nickel underplate overall.
 Electrical: Operating voltage: 200 VAC max.
 Current rating: 0.5 Amps max.
 Contact resistance: 70 mohms max. initial
 Insulation resistance: 100 Mohms min.
 Environmental: Lead free, RoHS compliant
 Recommended soldering temp: 260°C for 5 seconds