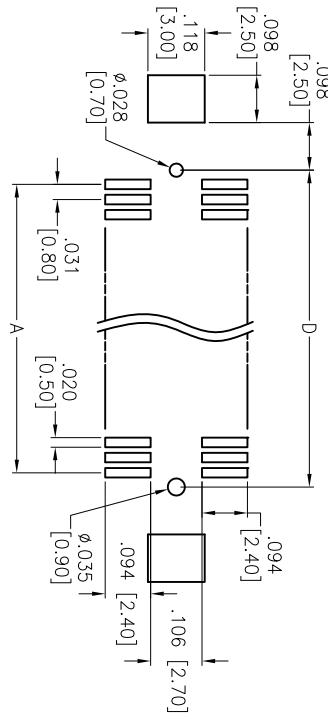
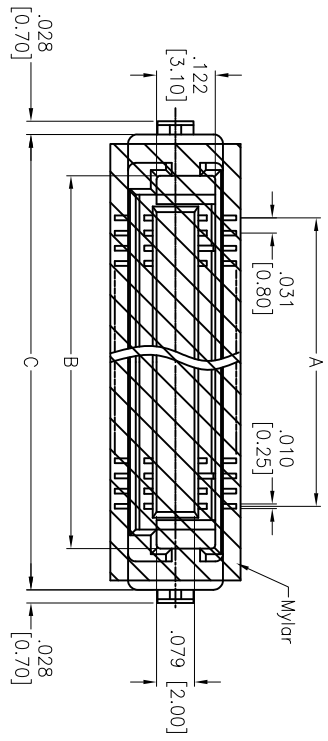
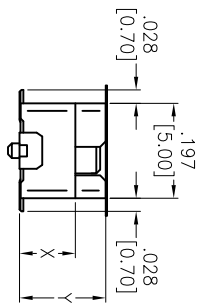
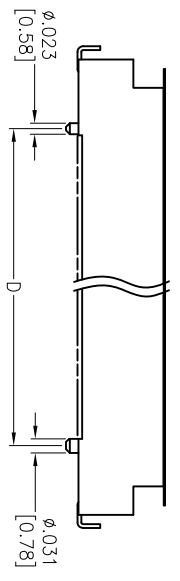


Rev	AWO #	Description	Date	Appr
-		RELEASED	7/19/12	

APPROVED: _____
 DATE: _____ TITLE: _____



RECOMMENDED PCB LAYOUT



ADAM P/N	X	Y
BB8-SED-XX-G-4.40-15-KT-T/R	.112 [2.85]	.173 [4.40]
BB8-SED-XX-G-6.55-15-KT-T/R	.197 [5.00]	.258 [6.55]
BB8-SED-XX-G-9.55-15-KT-T/R	.315 [8.00]	.376 [9.55]
BB8-SED-XX-G-12.55-15-KT-T/R	.433 [11.00]	.494 [12.55]

PACKAGED ON TAPE & REEL

Positions: 20, 30, 40, 50, 60
 A = .031 [0.80] x (No. of Contacts per row - 1)
 B = .031 [0.80] x (No. of Contacts per row - 1) + .175 [4.45]
 C = .031 [0.80] x (No. of Contacts per row - 1) + .346 [8.80]
 D = .031 [0.80] x (No. of Contacts per row - 1) + .059 [1.50]

ADAM TECH

909 Railway Avenue, Union, NJ 07083
 Phone: 908-687-5000 Fax: 908-687-5710

UNLESS OTHERWISE SPECIFIED
 ALL DIMENSIONS ARE INCHES [MM]
 TOLERANCES: EXCEPT AS NOTED

INCHES	HOLES
.X ± .10	ϕ X ± .10
.XX ± .020	ϕ XX ± .015
.XXX ± .015	ϕ XXX ± .010

APPROVALS	DATE
DRAWN AY	7/19/12
CHECKED CC	7/19/12
APPROVED	

TITLE	SIZE	PART NO.	SCALE	SHEET	REV.
.031 [0.80] BOARD TO BOARD SOCKET, SMT TYPE	X	BB8-SED-XX-G-X-XX-15-KT-T/R	NTS	1 OF 1	-

SPECIFICATIONS:
 Material: Insulator: Hi-temp thermoplastic, rated UL 94V-0
 Insulator color: Black
 Contacts: Copper Alloy
 Hold down: Copper Alloy
 Plating: 15u" Gold over Nickel underplate overall.
 Electrical: Operating voltage: 200 VAC max.
 Current rating: 0.5 Amps max.
 Contact resistance: 70 mohms max. initial
 Insulation resistance: 100 Mohms min.
 Environmental: Lead free, RoHS compliant

