

6

5

4

3

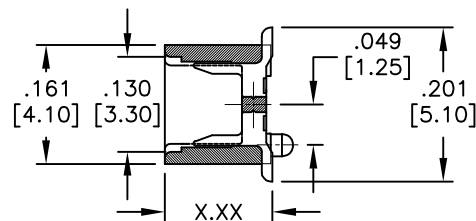
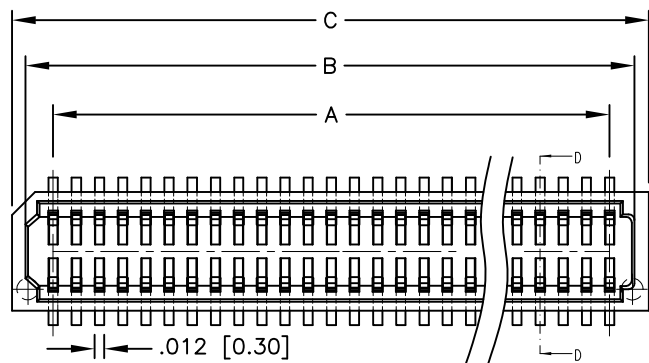
2

1

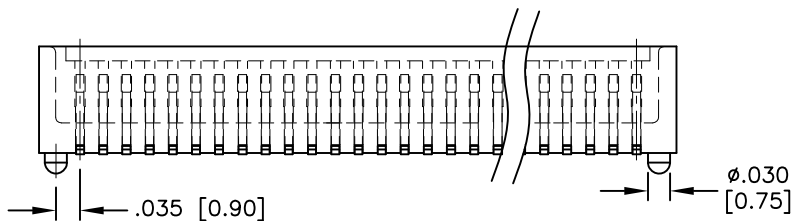
APPROVED: _____

DATE: _____ TITLE: _____

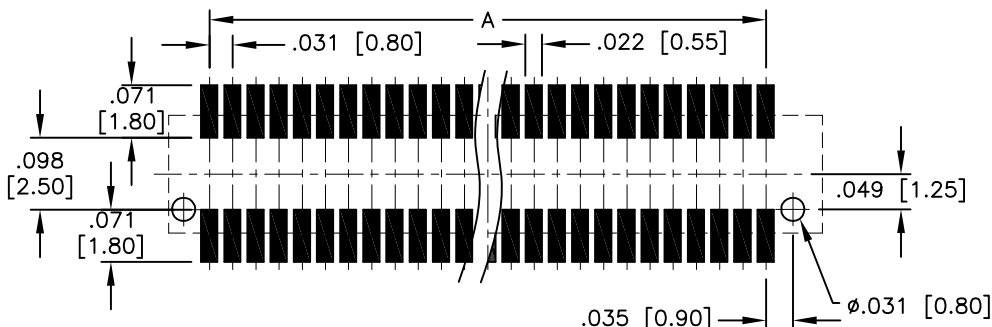
Rev	AWO #	Description	Date	Appr
-		RELEASED	5/9/16	



D-D



ADAM P/N	BB8-PL (H)	X.XX	Mating Heigh
BB8-SL-XXX-G-3.55-HF-T/R	.140 [3.55]	.140 [3.55]	.181 [4.60]
BB8-SL-XXX-G-5.05-HF-T/R	.140 [3.55]	.199 [5.05]	.236 [6.00]
BB8-SL-XXX-G-5.45-HF-T/R	.140 [3.55]	.215 [5.45]	.256 [6.50]
BB8-SL-XXX-G-6.05-HF-T/R	.140 [3.55]	.238 [6.05]	.276 [7.00]



SPECIFICATIONS:

Material:

Insulator: Hi-Temp thermoplastic, rated UL 94V-0

Insulator color: Black

Contacts: Copper Alloy

Plating:

Gold flash over Nickel underplate overall

Electrical:

Operating voltage: 100V.

Current rating: 0.5A.

Contact resistance: 40 mohms max.

Insulation resistance: 100 Mohms min

Dielectric withstanding voltage: 500 VAC for 1 minute

Temperature Rating:

Operating temperature: -55°C to +125°C

Environmental:

Lead free, RoHS compliant

RECOMMENDED PCB LAYOUT

PACKAGED ON TAPE & REEL

Position: 10 thru 100

A = .031 [0.80] x (No. of Contacts/2 - 1)

B = .031 [0.80] x (No. of Contacts/2 - 1) + .063 [1.60]

C = .031 [0.80] x (No. of Contacts/2 - 1) + .126 [3.20]

UNLESS OTHERWISE SPECIFIED
ALL DIMENSIONS ARE INCHES [MM]
TOLERANCES: EXCEPT AS NOTED

INCHES		HOLES	
.X	± .10	∅X	± .10
.XX	± .020	∅.XX	± .015
.XXX	± .015	∅.XXX	± .010

APPROVALS		DATE
DRAWN	AY	5/9/16
CHECKED	AC	5/9/16
APPROVED		

ADAM TECH

909 Rahway Avenue, Union, NJ 07083
Phone: 908-687-5000 Fax: 908-687-5710

TITLE
.031 [0.80] PITCH BOARD TO BOARD
SOCKET CONNECTOR, SMT TYPE

SIZE X	PART NO. BB8-SL-XXX-G-X.XX-HF-T/R	REV. -
REF: S00070T	SCALE: NTS	SHEET 1 OF 1



6

5

4

3

2

1