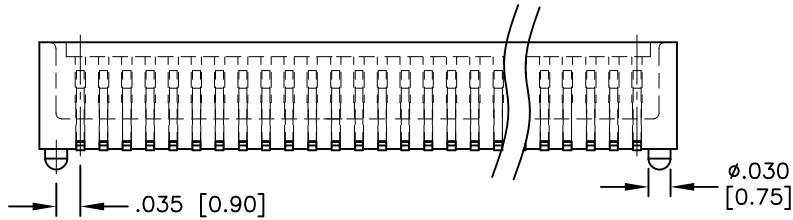
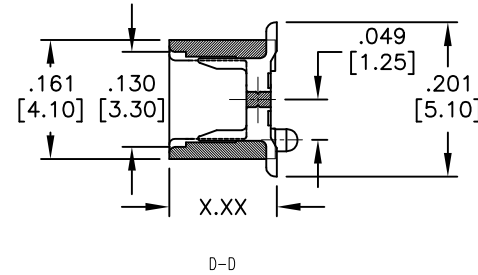
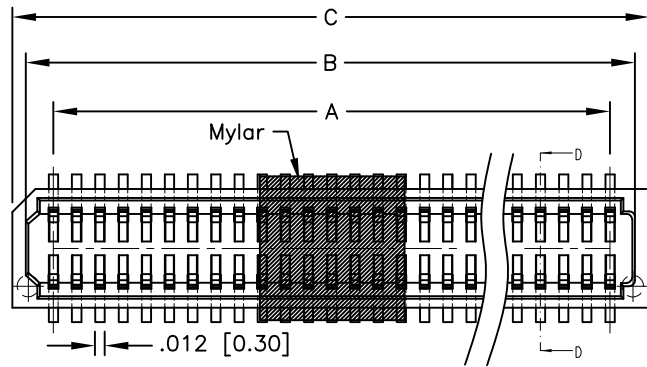
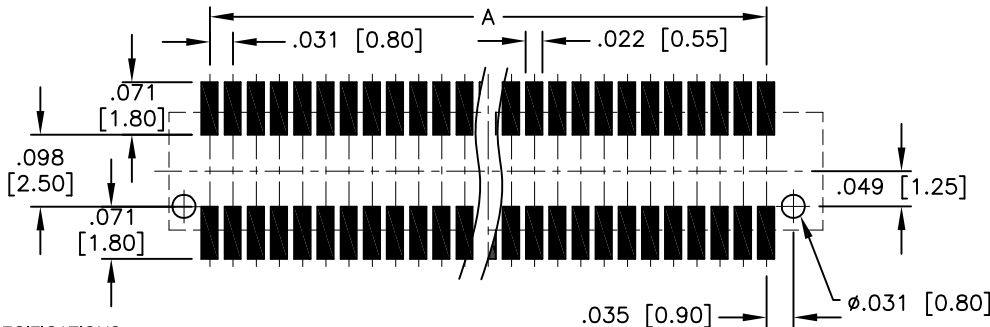


APPROVED: _____
 DATE: _____ TITLE: _____

Rev	AWO #	Description	Date	Appr
-		RELEASED	5/6/14	
A		REVISED INSULATOR COLOR	6/6/14	AY/NP
B		ADDED MATING HEIGH	5/12/15	AY/LW
C		UPDATE SPEC.	11/16/15	AY/SY



ADAM P/N	BB8-PL (H)	X.XX	Mating Heigh
BB8-SL-XXX-G-3.55-KT-HF-T/R	.140 [3.55]	.140 [3.55]	.181 [4.60]
BB8-SL-XXX-G-5.05-KT-HF-T/R	.140 [3.55]	.199 [5.05]	.236 [6.00]
BB8-SL-XXX-G-5.45-KT-HF-T/R	.140 [3.55]	.215 [5.45]	.256 [6.50]
BB8-SL-XXX-G-6.05-KT-HF-T/R	.140 [3.55]	.238 [6.05]	.276 [7.00]



SPECIFICATIONS: RECOMMENDED PCB LAYOUT

Material:
 Insulator: Hi-Temp thermoplastic, rated UL 94V-0
 Insulator color: Black
 Contacts: Copper Alloy
 Plating:
 Gold flash over Nickel underplate overall
 Electrical:
 Operating voltage: 100V.
 Current rating: 0.5A.
 Contact resistance: 40 mohms max.
 Insulation resistance: 100 Mohms min
 Dielectric withstanding voltage: 500 VAC for 1 minute
 Temperature Rating:
 Operating temperature: -55°C to +125°C
 Environmental:
 Lead free, RoHS compliant



PACKAGED ON TAPE & REEL

Position: 10 thru 100
 A = .031 [0.80] x (No. of Contacts/2 - 1)
 B = .031 [0.80] x (No. of Contacts/2 - 1) + .063 [1.60]
 C = .031 [0.80] x (No. of Contacts/2 - 1) + .126 [3.20]

UNLESS OTHERWISE SPECIFIED ALL DIMENSIONS ARE INCHES [MM] TOLERANCES: EXCEPT AS NOTED		
INCHES		HOLES
.X	± .10	ϕ .X ± .10
.XX	± .020	ϕ .XX ± .015
.XXX	± .015	ϕ .XXX ± .010

APPROVALS		DATE
DRAWN	HR	5/6/14
CHECKED	NP	5/6/14
APPROVED		

ADAM TECH

909 Rahway Avenue, Union, NJ 07083
 Phone: 908-687-5000 Fax: 908-687-5710

TITLE			
.031 [0.80] PITCH BOARD TO BOARD SOCKET CONNECTOR, SMT TYPE			
SIZE	PART NO.	REV.	
X	BB8-SL-XXX-G-X.XX-KT-HF-T/R	C	
REF: S00070T	SCALE: NTS	SHEET 1 OF 1	