

6

5

4

3

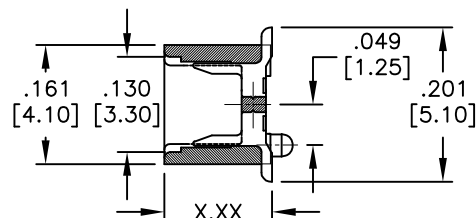
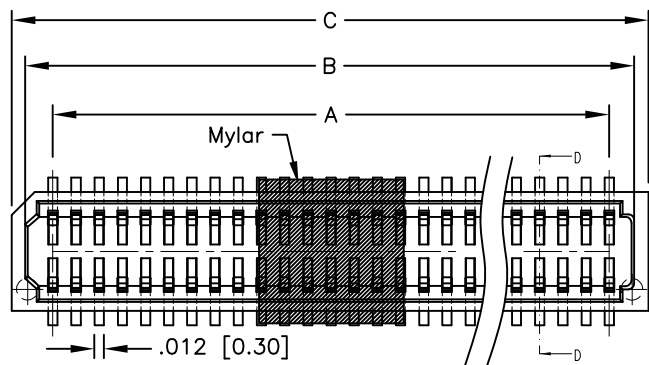
2

1

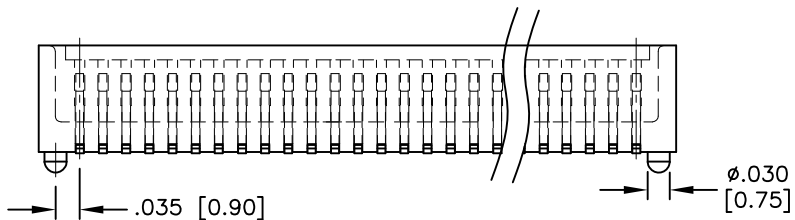
APPROVED: \_\_\_\_\_

DATE: \_\_\_\_\_ TITLE: \_\_\_\_\_

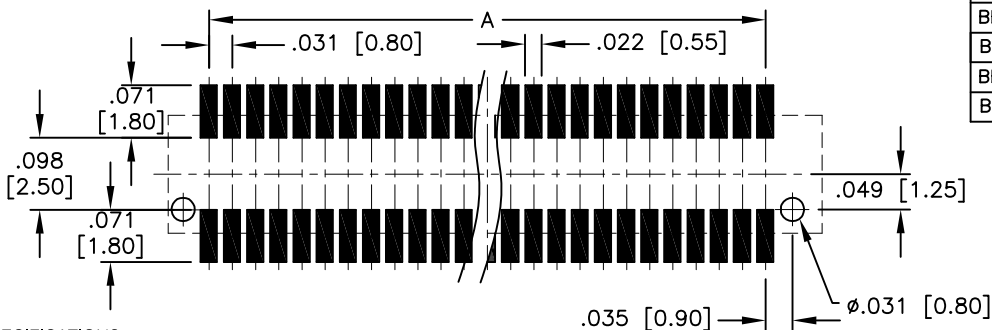
Rev	AWO #	Description	Date	Appr
-		RELEASED	1/7/16	



D-D



ADAM P/N	BB8-PL (H)	X.XX	Mating Height
BB8-SL-XXX-G-3.55-WT-KT-HF-T/R	.140 [3.55]	.140 [3.55]	.181 [4.60]
BB8-SL-XXX-G-5.05-WT-KT-HF-T/R	.140 [3.55]	.199 [5.05]	.236 [6.00]
BB8-SL-XXX-G-5.45-WT-KT-HF-T/R	.140 [3.55]	.215 [5.45]	.256 [6.50]
BB8-SL-XXX-G-6.05-WT-KT-HF-T/R	.140 [3.55]	.238 [6.05]	.276 [7.00]



RECOMMENDED PCB LAYOUT

SPECIFICATIONS:

- Material:
- Insulator: Hi-Temp thermoplastic, rated UL 94V-0
- Insulator color: White
- Contacts: Copper Alloy
- Plating:
- Gold flash over Nickel underplate overall
- Electrical:
- Operating voltage: 100V.
- Current rating: 0.5A.
- Contact resistance: 40 mohms max.
- Insulation resistance: 100 Mohms min
- Dielectric withstanding voltage: 500 VAC for 1 minute
- Temperature Rating:
- Operating temperature: -55°C to +125°C
- Environmental:
- Lead free, RoHS compliant



PACKAGED ON TAPE & REEL

- Position: 10 thru 100
- A = .031 [0.80] x (No. of Contacts/2 - 1)
- B = .031 [0.80] x (No. of Contacts/2 - 1) + .063 [1.60]
- C = .031 [0.80] x (No. of Contacts/2 - 1) + .126 [3.20]

UNLESS OTHERWISE SPECIFIED  
 ALL DIMENSIONS ARE INCHES [MM]  
 TOLERANCES: EXCEPT AS NOTED

INCHES	HOLES
.X ± .10	∅.X ± .10
.XX ± .020	∅.XX ± .015
.XXX ± .015	∅.XXX ± .010

APPROVALS		DATE
DRAWN	HR	1/7/16
CHECKED	NP	1/7/16
APPROVED		

# ADAM TECH

909 Rahway Avenue, Union, NJ 07083  
 Phone: 908-687-5000 Fax: 908-687-5710

TITLE  
 .031 [0.80] PITCH BOARD TO BOARD  
 SOCKET CONNECTOR, SMT TYPE, WHITE

SIZE	PART NO.	REV.
X	BB8-SL-XXX-G-X.XX-WT-KT-HF-T/R	-
REF: S00070T	SCALE: NTS	SHEET 1 OF 1

6

5

4

3

2

1