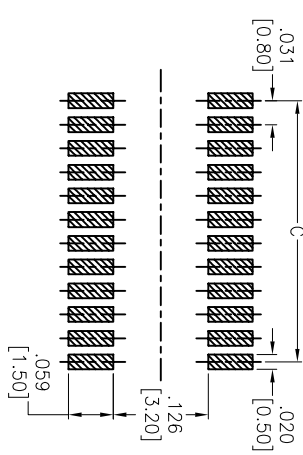
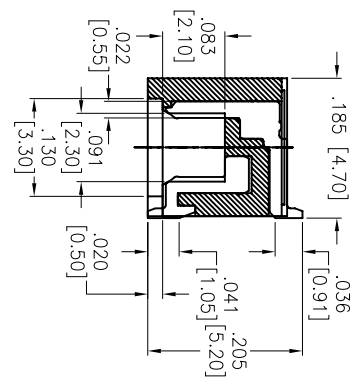
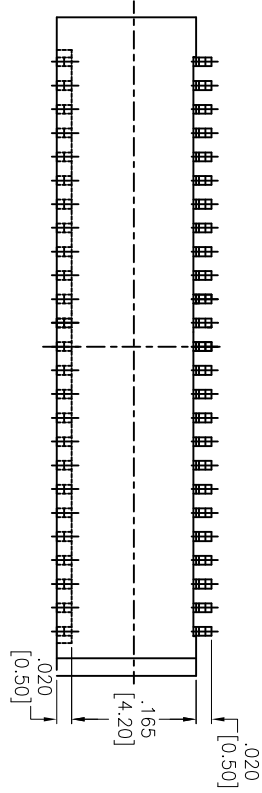
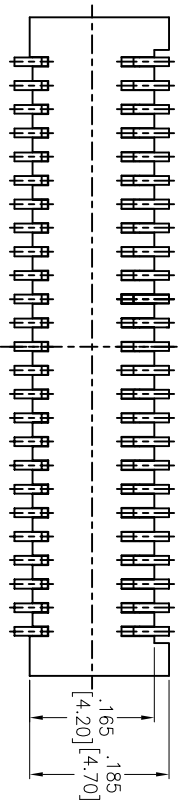
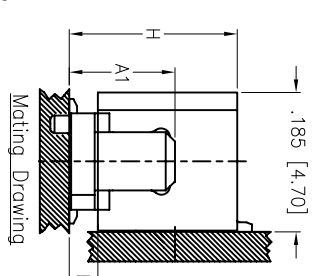
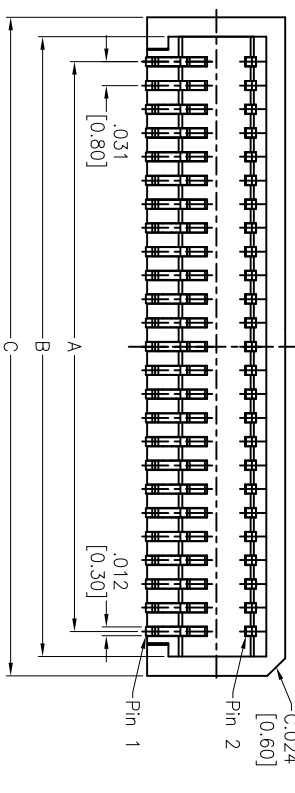


APPROVED: _____
 DATE: _____ TITLE: _____

Rev	AWO #	Description	Date	Appr
-		RELEASED	11/14/13	
A		UPDATE DIM.	9/30/15	AY



RECOMMENDED PCB LAYOUT



Mating	Dim A1	Dim H	Dim E
BB8-PN-XXX-G-3.55-PP-T/R	.140 [3.55]	.222 [5.65]	.037 [0.95]
BB8-PN-XXX-G-4.05-PP-T/R	.159 [4.05]	.242 [6.15]	.057 [1.45]

PACKAGED ON TAPE & REEL

Positions: 10, 12, 14, 16, 18, 20, 22, 24, 26, 28, 30, 32, 34, 36, 38, 40, 50, 60, 68, 70, 80, 90, 100

A = .031 [0.80] x (No. of Positions per row - 1)
 B = .031 [0.80] x (No. of Positions per row - 1) + .067 [1.70]
 C = .031 [0.80] x (No. of Positions per row - 1) + .118 [3.00]

SPECIFICATIONS:

Material: Insulator: Hi-temp thermoplastic, rated UL 94V-0
 Insulator color: White
 Contacts: Phosphor Bronze
 Plating: Gold flash over Nickel underplate overall
 Electrical: Operating voltage: 100 VAC max.
 Current rating: 0.5 Amps max.
 Contact resistance: 40 mohms max. initial
 Insulation resistance: 100 Mohms min.
 Dielectric withstanding voltage: 500 VAC for 1 minute
 Temperature Rating: Operating temperature: -40°C to +105°C
 Environmental: Lead free, RoHS compliant



ADAM TECH

909 Rahway Avenue, Union, NJ 07083
 Phone: 908-687-5000 Fax: 908-687-5710

TITLE: .031 [0.80] BOARD TO BOARD, SOCKET
 RIGHT ANGLE, SMT TYPE, 4.70MM HEIGHT

UNLESS OTHERWISE SPECIFIED ALL DIMENSIONS ARE INCHES [MM]		TOLERANCES: EXCEPT AS NOTED	
.X	± .10	ØXX	± .10
.XX	± .020	ØXXX	± .015
.XXX	± .015	ØXXXX	± .010
APPROVALS	DATE	SIZE	PART NO.
DRAWN	TW	X	BB8-SN-XXX-G-4.70-RA-T/R
CHECKED		REF: S0005T	SCALE: NTS
APPROVED			SHEET 1 OF 1