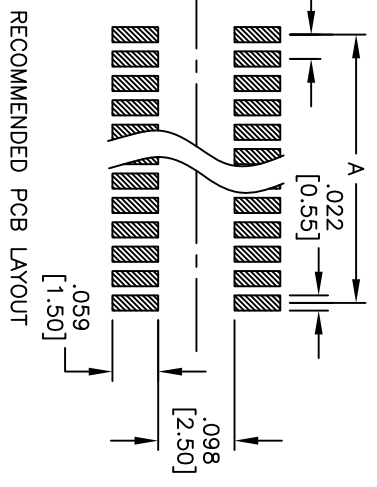
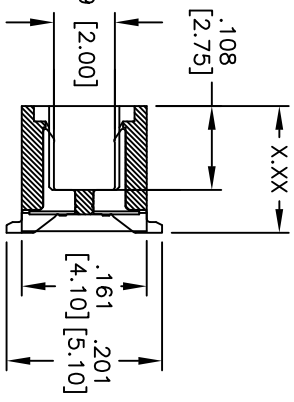
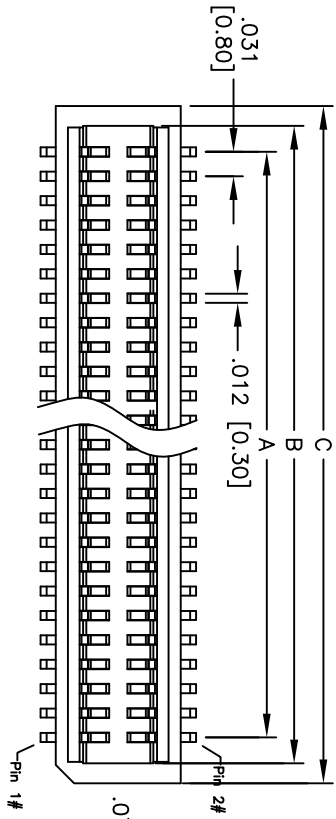
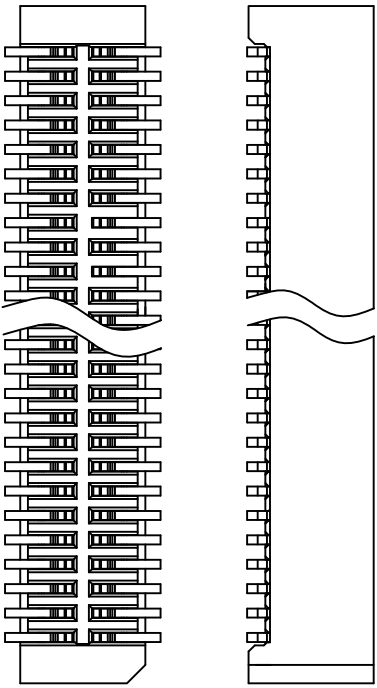


Rev	AWO #	Description	Date	Appr
-		RELEASED	5/24/12	

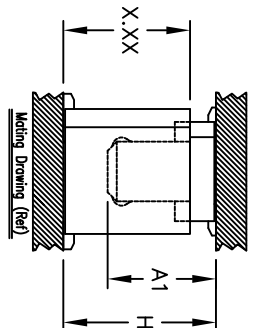
APPROVED: _____
 DATE: _____ TITLE: _____



RECOMMENDED PCB LAYOUT



PACKAGED ON TAPE & REEL



ADAM P/N	X.XX	Plug Height (A1)	Mating Height (H)
BB8-SN-XXX-G-3.65-NP-T/R	.144 [3.65]	.140 [3.55]	.177 [4.50]
BB8-SN-XXX-G-4.15-NP-T/R	.163 [4.15]	.197 [5.00]	2.17 [5.50]
BB8-SN-XXX-G-5.15-NP-T/R	.203 [5.15]	.140 [3.55]	2.36 [6.00]
BB8-SN-XXX-G-5.65-NP-T/R	.222 [5.65]	.199 [4.05]	2.76 [7.00]
BB8-SN-XXX-G-4.70-NP-T/R	.185 [4.70]	.140 [3.55]	2.22 [5.65]
		.159 [4.05]	2.42 [6.15]

Mated with: BB8-PN-XXX-G-XXX-NP-T/R

SPECIFICATIONS:

Material: Insulator: Hi-temp thermoplastic, rated UL 94V-0
 Insulator color: White
 Contacts: Phosphor Bronze
 Plating: Gold flash over Nickel underplate overall
 Electrical: Operating voltage: 100 VAC max.
 Current rating: 0.5 Amps max.
 Contact resistance: 40 mohms max. initial
 Insulation resistance: 100 Mohms min.
 Dielectric withstanding voltage: 500 VAC for 1 minute
 Temperature Rating: Operating temperature: -40°C to +105°C
 Environmental: Lead free, RoHS compliant

Positions: 10, 12, 14, 16, 18, 20, 22, 24, 26, 28, 30, 32, 34, 36, 38, 40, 50, 60, 68, 70, 80, 90, 100
 A = .031 [0.80] x (No. of Positions per row - 1) + .067 [1.70]
 B = .031 [0.80] x (No. of Positions per row - 1) + .118 [3.00]
 C = .031 [0.80] x (No. of Positions per row - 1) + .118 [3.00]

ADAM TECH

909 Railway Avenue, Union, NJ 07083
 Phone: 908-687-5000 Fax: 908-687-5710

.031 [0.80] BOARD TO BOARD
 SOCKET, SMT TYPE, NO PEG

UNLESS OTHERWISE SPECIFIED ALL DIMENSIONS ARE INCHES [MM]		TITLE .031 [0.80] BOARD TO BOARD SOCKET, SMT TYPE, NO PEG	
TOLERANCES: EXCEPT AS NOTED INCHES .X ± .10 .XX ± .020 .XXX ± .015 XXX ± .010		HOLE SIZES ØX ± .10 ØXXX ± .015 ØXXX ± .010	
DRAWN	AY	DATE	5/24/12
CHECKED	NP	DATE	5/24/12
APPROVED		DATE	
SIZE	PART NO.	REV.	
X	BB8-SN-XXX-G-XXX-NP-T/R		
REF:	S00056T	SCALE:	NIS
		SHEET	1 OF 1