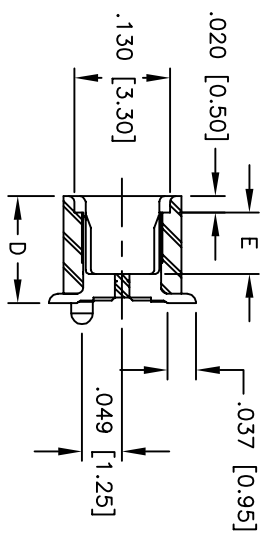
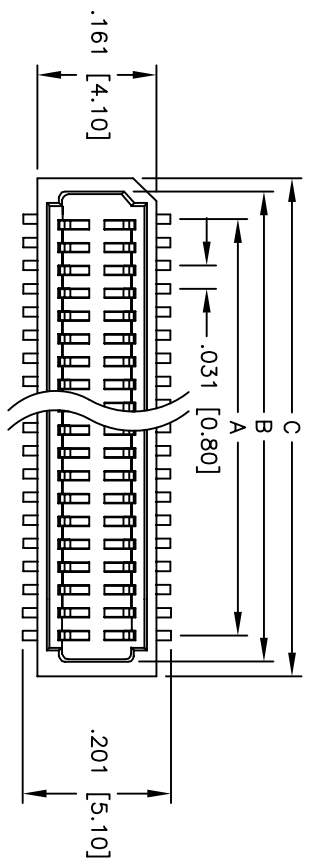
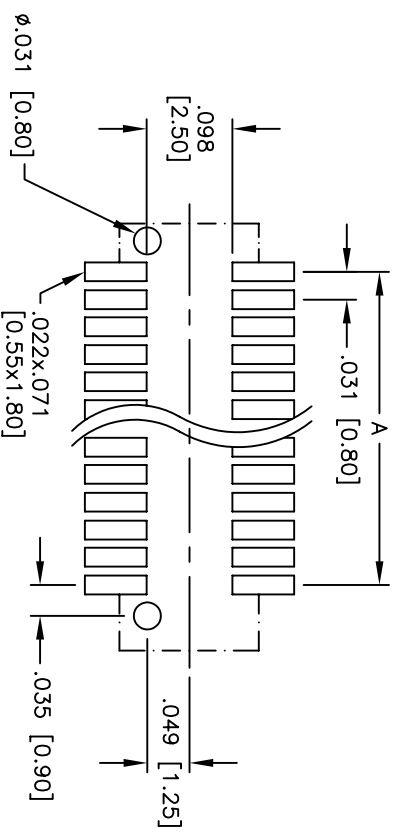
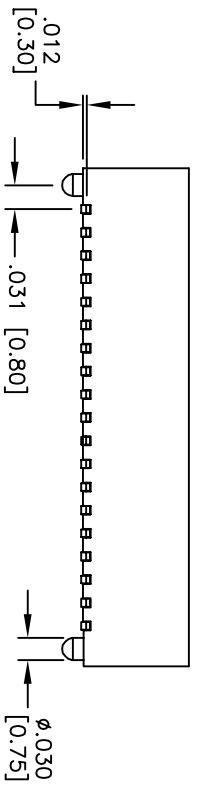


Rev	AWO #	Description	Date	Appr
-		RELEASED	5/23/05	

APPROVED: \_\_\_\_\_  
 DATE: \_\_\_\_\_ TITLE: \_\_\_\_\_



TYPE	DIMENSIONS		STACKING HEIGHT
	D	E	
S1	.140 [3.55]	.079 [2.00]	.177 [4.50]
S2	.199 [5.05]	.110 [2.80]	.236 [6.00]
S3	.215 [5.45]	.122 [3.10]	.256 [6.50]
S4	.238 [6.05]	.110 [2.80]	.276 [7.00]



**SPECIFICATIONS:**

**Material:**  
 Insulator: Nylon 6I, glass reinforced, rated UL 94V-0  
 Insulator color: Natural  
 Contacts: Phosphor Bronze  
 Plating:  
 Gold flash over Nickel underplate overall  
**Electrical:**  
 Operating voltage: 50 VAC max.  
 Current rating: 0.5 Amps max.  
 Contact resistance: 40 mohms max. initial  
 Insulation resistance: 1,000 Mohms min.  
 Dielectric withstanding voltage: 500 VAC for 1 minute  
**Temperature Rating:**  
 Operating temperature: -65°C to +155°C  
**Environmental:**  
 Lead free, RoHS compliant  
 Recommended soldering temp: 260°C for 5 seconds

**Positions: 10 thru 100**  
 A = .031 [0.80] x (No. of Contacts - 1)  
 B = .031 [0.80] x (No. of Contacts - 1) + .063 [1.60]  
 C = .031 [0.80] x (No. of Contacts - 1) + .126 [3.20]

**ADAM TECH**

909 Rahway Avenue, Union, NJ 07083  
 Phone: 908-687-5000 Fax: 908-687-5710

TITLE: .031 [0.80] BOARD TO BOARD SOCKET  
 SURFACE MOUNT

UNLESS OTHERWISE SPECIFIED ALL DIMENSIONS ARE INCHES [MM]		TOLERANCES: EXCEPT AS NOTED	
INCHES		HOLDS	
.X	± .10	ØX	± .10
.XX	± .020	ØXXX	± .015
.XXX	± .015	ØXXXX	± .010
APPROVALS	DATE	SIZE	PART NO.
DRAWN	SS	5/23/05	BB8-SX-XXX-G
CHECKED		SCALE: NTS	SHEET 1 OF 1
APPROVED		REV.	

