

6

5

4

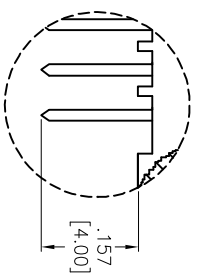
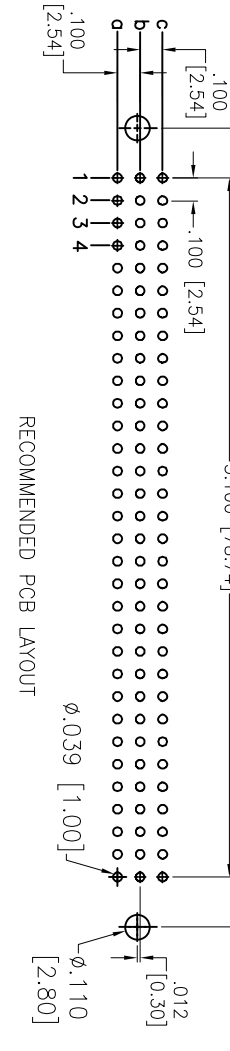
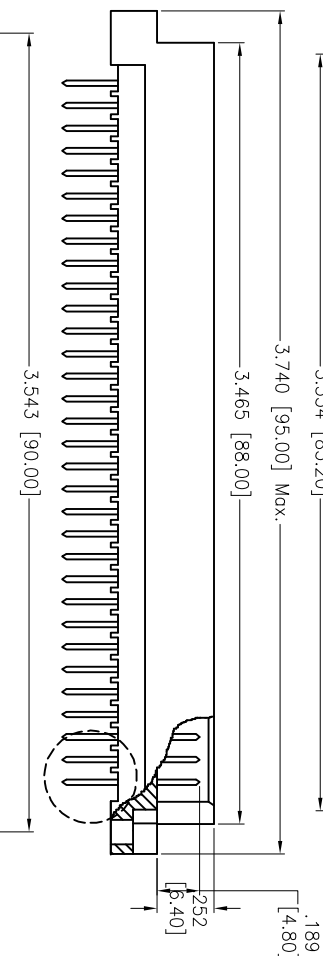
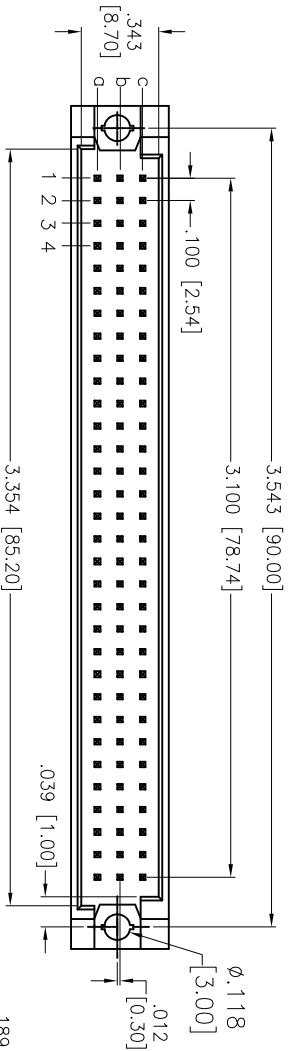
3

2

1

APPROVED: \_\_\_\_\_  
 DATE: \_\_\_\_\_ TITLE: \_\_\_\_\_

Rev	AWO #	Description	Date	Appr
-		RELEASED	01/04/06	
A		REDRAWN	9/5/12	
B		REVISED SHAPE	1/17/14	AV/EH



RECOMMENDED PCB LAYOUT

**SPECIFICATIONS:**  
**Material:**  
 Insulator: PBT, glass reinforced, rated UL 94V-0  
 Contacts: Copper Alloy  
**Plating:**  
 X Gold over Nickel underplate on contact area,  
 Tin over Copper underplate on solder tails.  
 (See chart for thickness)

**Electrical:**  
 Current rating: 2 Amps max  
 Contact resistance: 20 mohms max  
 Insulation resistance: 1,000 Mohms min@ DC 500V  
 Dielectric withstanding voltage: 1,000 VAC for 1 minute

**Temperature Rating:**  
 Operating temperature:  $-55^{\circ}\text{C}$  to  $+125^{\circ}\text{C}$   
 Environmental:  
 Lead free, RoHS compliant.

"X" PLATING
C1 30 u" Gold
C2 15 u" Gold
C3 Gold Flash

UNLESS OTHERWISE SPECIFIED  
 ALL DIMENSIONS ARE MM [INCHES]  
 TOLERANCES: EXCEPT AS NOTED  
 INCHES  
 .X  $\pm .10$   $\phi$ X  $\pm .10$   
 .XX  $\pm .020$   $\phi$ XX  $\pm .015$   
 .XXX  $\pm .015$   $\phi$ XXX  $\pm .010$

# ADAM TECH

909 Railway Avenue, Union, NJ 07083  
 Phone: 908-687-5000 Fax: 908-687-5710

TITLE: DIN 41612, 96P MALE STRAIGHT  
 PCB MOUNT

DRAWN		TW	02/27/13	DATE
CHECKED	CC		02/27/13	
APPROVED				
SIZE	PART NO.	REV.		
X	DIN-96MS-133-A1CX	B		
REF:	S00038T	SCALE:	NIS	SHEET 1 OF 1

6

5

4

3

2

1

