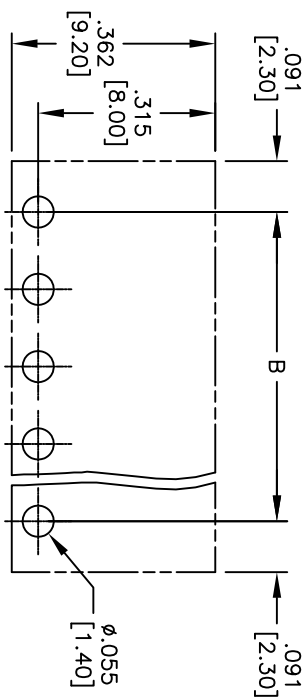
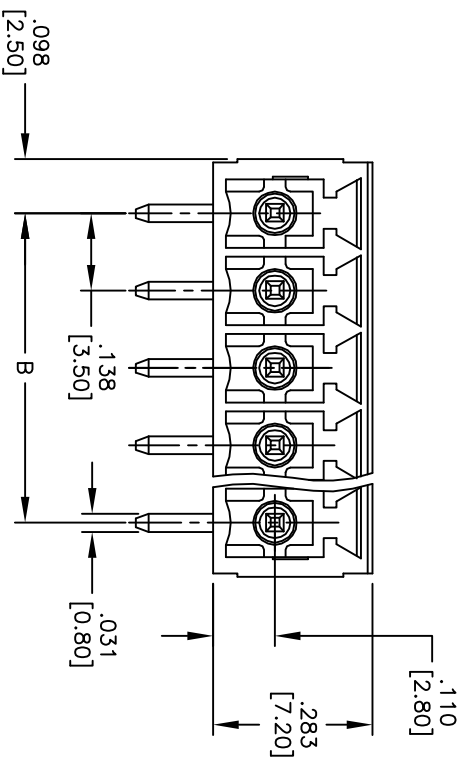
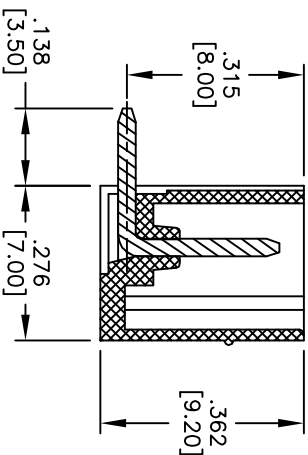
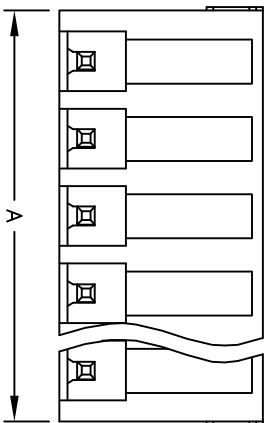


APPROVED: _____
 DATE: _____ TITLE: _____

Rev	AWO #	Description	Date	Appr
-		RELEASED	9/06/10	
A		ADD SPEC.	9/26/11	



RECOMMENDED PCB LAYOUT



	Tolerance
2-6P	±.008 [0.20]
7-12P	±.010 [0.25]
13-18P	±.012 [0.30]
19-24P	±.016 [0.40]

Poles: 2 thru 24
 A = .138 [3.50] x No. of (Poles - 1) + .181 [4.60]
 B = .138 [3.50] x No. of (Poles - 1)

SPECIFICATIONS:

Material:
 Insulator: Thermoplastic, rated UL 94V-0
 Insulator color: Green
 Contact: Brass, Tin plated
Electrical:
 Operation voltage: 300 VAC max
 Current rating: 10 Amps max
 Withstanding voltage: 1.6KV
Environmental:
 Operating temperature: -40°C to +115°C
Environmental:
 Lead free, RoHS compliant.



ADAM TECH

909 Rahway Avenue, Union, NJ 07083
 Phone: 908-687-5000 Fax: 908-687-5710

TITLE
 .138 [3.50] TERMINAL BLOCK

UNLESS OTHERWISE SPECIFIED ALL DIMENSIONS ARE INCHES [MM] TOLERANCES: EXCEPT AS NOTED INCHES		HOLE SIZES		APPROVALS		DATE	
.X	±.10	ØX	±.10	DRAWN	DY	9/06/10	
.XX	±.020	ØXX	±.015	CHECKED			
.XXX	±.015	ØXXX	±.010	APPROVED			
SIZE		PART NO.		REF:		SCALE: MTS	
X		EB3-XX-A		S00007T		SHEET 1 OF 1	
REV.		REV.		REV.		REV.	
A		A		A		A	