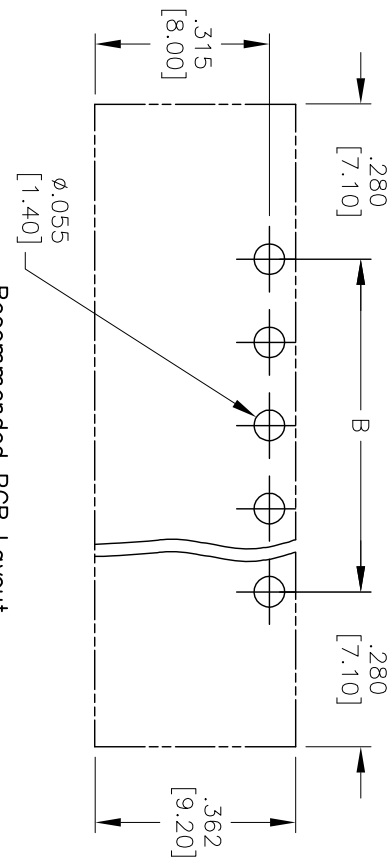
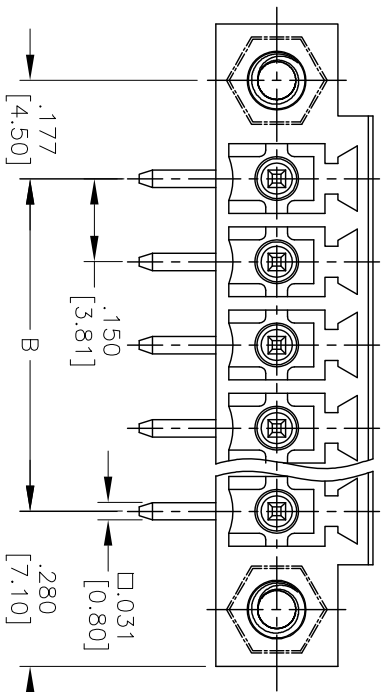
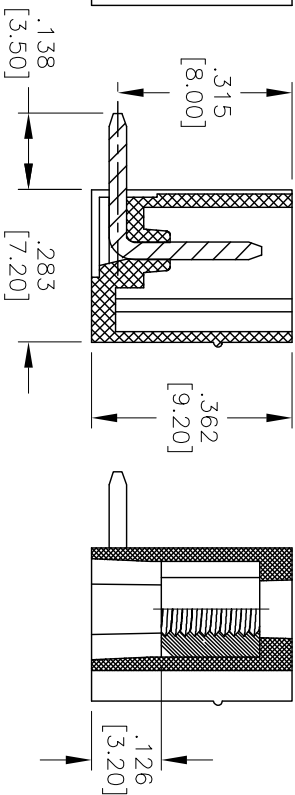
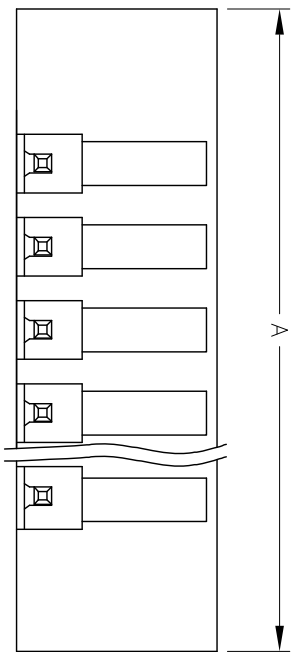


APPROVED: _____
 DATE: _____ TITLE: _____

Rev	AWO #	Description	Date	Appr
-		RELEASED	8/18/11	
A		ADDED TOLERANCE	1/2/12	



Recommended PCB Layout



	Tolerance
2-6P	±.006 [0.15]
7-12P	±.008 [0.20]
13-16P	±.010 [0.25]
17-24P	±.012 [0.30]

SPECIFICATIONS:

Material: Insulator: Thermoplastic, rated UL 94V-0
 Insulator color: Green
 With flange nut: Brass, M2.5
 Contact: Copper Alloy, Tin plated.
 Electrical:
 Operation voltage: 300 VAC
 Current ratings: 10 Amps
 Mechanical:
 Withstanding Voltage: 1.6KV
 Environmental:
 Operating temperature: -40°C to +115°C
 Lead free, RoHS compliant.

Poles: 2 thru 24
 A = .150 [3.81] X No. of Spaces + .559 [14.20]
 B = .150 [3.81] X No. of Spaces

UNLESS OTHERWISE SPECIFIED
 ALL DIMENSIONS ARE MM [INCHES]
 TOLERANCES: EXCEPT AS NOTED
 INCHES

X	±.10	ØX	±.10
.XX	±.020	ØXX	±.015
.XXX	±.015	ØXXX	±.010

APPROVALS

DRAWN	TW	8/18/11
CHECKED	AY	8/18/11
APPROVED		

ADAM TECH
 909 Rahway Avenue, Union, NJ 07083
 Phone: 908-687-5000 Fax: 908-687-5710

TITLE: EURO BLOCK, .150 [3.81] PITCH, RIGHT ANGLE

SIZE	PART NO.	REV.
X	EB3-XX-B-E	A
REF: S00007T	SCALE: NTS	SHEET 1 OF 1

