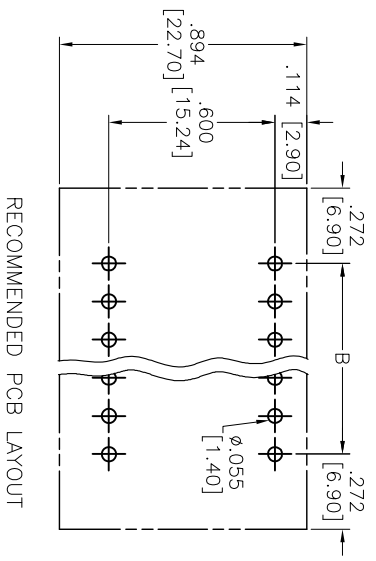
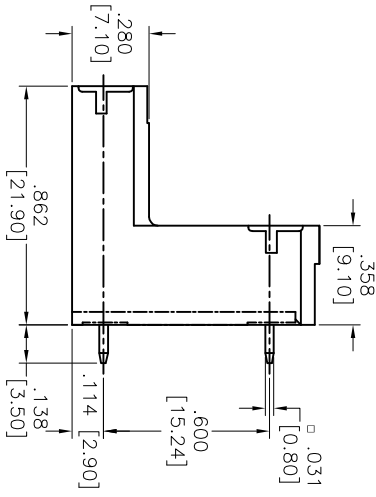
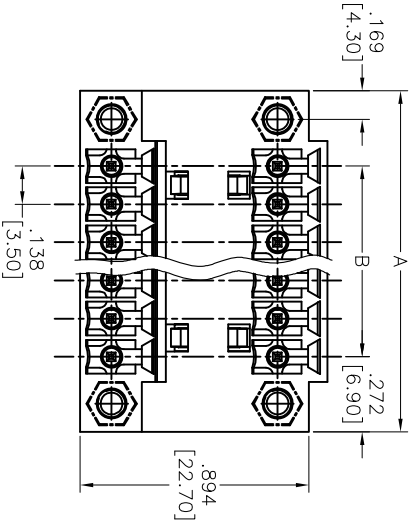


Rev	AWO #	Description	Date	Appr
-		RELEASED	11/03/11	

APPROVED: _____
 DATE: _____ TITLE: _____



RECOMMENDED PCB LAYOUT

	Tolerance
4-10P	±.006 [0.15]
12-20P	±.008 [0.20]
22-30P	±.010 [0.25]
32-40P	±.012 [0.30]
42-48P	±.014 [0.35]

Positions: 4 thru 48
 A = .138 [3.50] x No. of Spaces + .094 [2.40]
 B = .138 [3.50] x No. of Spaces

SPECIFICATIONS:

- Material: Insulator: Thermoplastic, rated UL 94V-0
- Insulator color: Green
- Contact: Brass, Tin plated
- With flange nut: Brass, M2.5
- Electrical:
 - Operation voltage: 300 VAC
 - Current rating: 10 Amps
 - Withstanding Voltage: 1.6KV
 - Temperature Rating: Operating temperature: -40°C to +115°C
- Environmental: Lead free, RoHS compliant.
- Recommended soldering temp: 250°C for 5 sec.

ADAM TECH

909 Railway Avenue, Union, NJ 07083
 Phone: 908-687-5000 Fax: 908-687-5710

TITLE: EURO BLOCK, 138 [3.50] PITCH, VERTICAL, WITH FLANGE

UNLESS OTHERWISE SPECIFIED ALL DIMENSIONS ARE INCHES [MM] TOLERANCES: EXCEPT AS NOTED	
.X INCHES	±.10
.XX	±.020
.XXX	±.015
.XXX	±.015
ØXX	±.010
ØXXX	±.010
APPROVALS	DATE
DRAWN TW	11/03/11
CHECKED AY	11/03/11
APPROVED	

REF: S00007T	SCALE: NTS	SHEET 1 OF 1
SIZE X	PART NO. EB8-XX-A-VT-E	REV. -



6 5 4 3 2 1