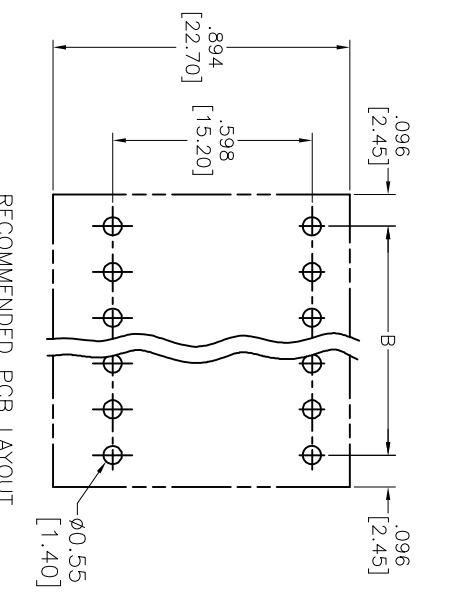
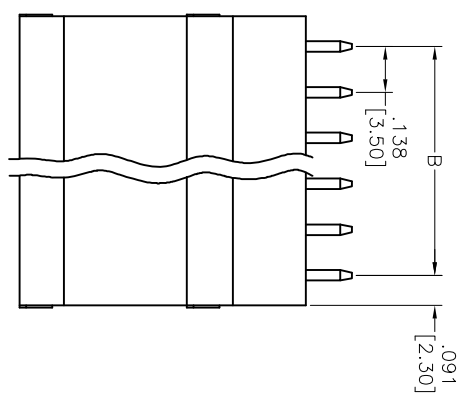
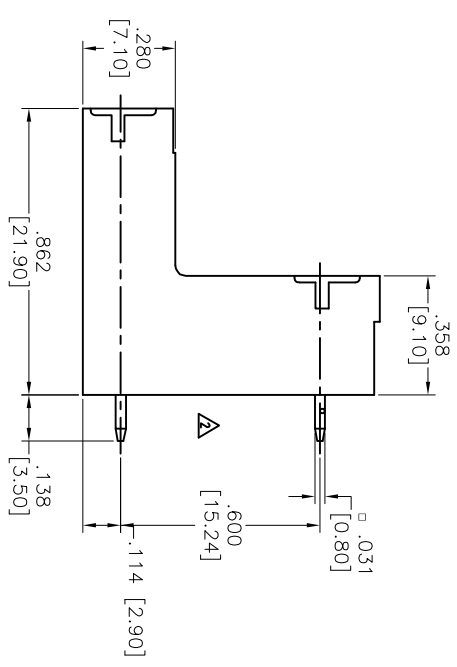
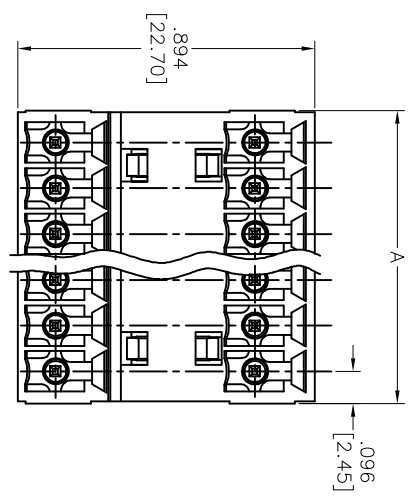


Rev	AWO #	Description	Date	Appr
-		RELEASED	11/03/11	

APPROVED: _____
 DATE: _____ TITLE: _____



RECOMMENDED PCB LAYOUT



Positions: 4 thru 48
 A = .138 [3.50] x No. of Spaces + .094 [2.40]
 B = .138 [3.50] x No. of Spaces

	Tolerance
4-10P	±.006 [0.15]
12-20P	±.008 [0.20]
22-30P	±.010 [0.25]
32-40P	±.012 [0.30]
42-48P	±.014 [0.35]

SPECIFICATIONS:
 Material: Insulator: Thermoplastic, rated UL 94V-0
 Insulator color: Green
 Contact: Brass, Tin plated
 Electrical:
 Operation voltage: 300 VAC
 Current rating: 10 Amps
 Withstanding Voltage: 1.6KV
 Temperature Rating:
 Operating temperature: -40°C to +115°C
 Environmental:
 Lead free, RoHS compliant.
 Recommended soldering temp: 250°C for 5 sec.

UNLESS OTHERWISE SPECIFIED
 ALL DIMENSIONS ARE IN INCHES [MM]
 TOLERANCES: EXCEPT AS NOTED
 INCHES: X ±.10 ØXX ±.015
 .XX ±.020 ØXXX ±.010
 .XXX ±.015

ADAM TECH

909 Railway Avenue, Union, NJ 07083
 Phone: 908-687-5000 Fax: 908-687-5710

EURO BLOCK, .138 [3.50] PITCH, VERTICAL

APPROVALS	DATE
DRAWN TW	11/03/11
CHECKED AY	11/03/11
APPROVED	

SIZE	PART NO.	REV.
X	EB8-XX-A-VT	-
REF:	S00007T	SHEET 1 OF 1



6 5 4 3 2 1