

6

5

4

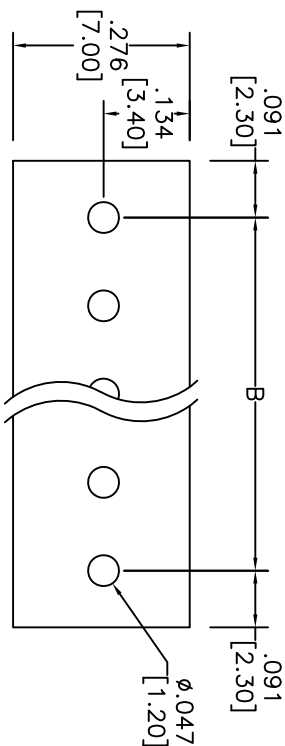
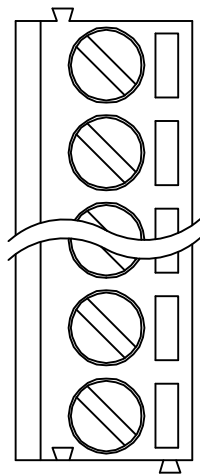
3

2

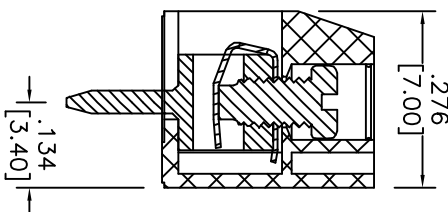
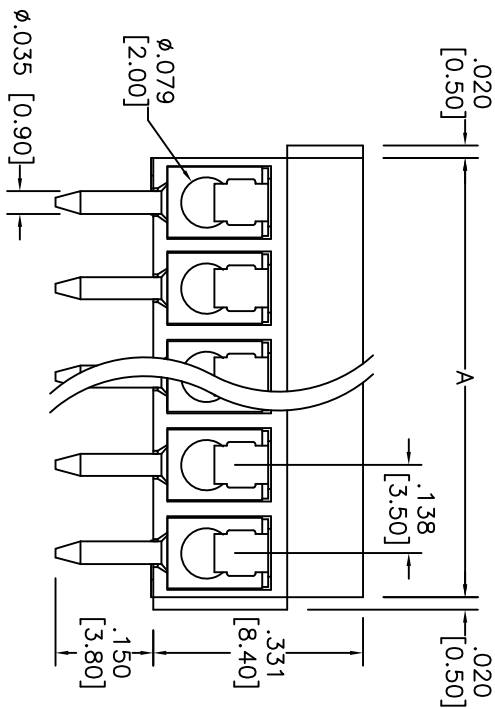
1

APPROVED: _____

DATE: _____ TITLE: _____



RECOMMENDED PCB LAYOUT



	Dim A	Dim B
2-6P	± 0.04 [0.10]	± 0.04 [0.10]
7-12P	± 0.08 [0.20]	± 0.06 [0.15]
13-18P	± 0.12 [0.30]	± 0.10 [0.25]
19-24P	± 0.16 [0.40]	± 0.14 [0.35]

Poles: 2 thru 24
 A = .138 [3.50] x No. of Positions
 B = .138 [3.50] x No. of Spaces

SPECIFICATIONS:

- Material: Insulator: Thermoplastic, rated UL 94V-0
- Insulator color: Black
- Screw: M2.0, Steel, Zn plated.
- Contact: Brass, Tin plated.
- Wire guard: Stainless Steel
- Electrical: Operation voltage: 125 VAC
- Current rating: 10 Amps
- Mechanical: Torque (Lb-in): 1.7
- Wire Range: 16-26 Awg
- Solid wire: 16-26 Awg
- Withstanding Voltage: 1.25KV
- Environmental: Operating temperature: -40°C to +115°C
- Lead free, RoHS compliant.

A

B

C

D

6

5

4

3

2

1

Rev	AWO #	Description	Date	Appr
-		RELEASED	1/15/08	
A		REVISED SHAPE	2/12/09	
B		REVISED DIM.	12/1/11	

ADAM TECH

909 Rahway Avenue, Union, NJ 07083
 Phone: 908-687-5000 Fax: 908-687-5710

EURO TERMINAL BLOCK, VERTICAL
 .138 [3.50] PITCH, PCB TYPE

UNLESS OTHERWISE SPECIFIED ALL DIMENSIONS ARE MM [INCHES]	
TOLERANCES: EXCEPT AS NOTED	
.X	$\pm .10$
.XX	$\pm .020$
.XXX	$\pm .015$
.XXX	$\pm .010$
ØX	$\pm .10$
ØXXX	$\pm .015$
ØXXX	$\pm .010$
APPROVALS	DATE
DRAWN	SLS
CHECKED	
APPROVED	

SIZE	PART NO.	REV.
X	EBC-XXA	B
REF: S00007T	SCALE: NTS	SHEET 1 OF 1

